

Eccentric self-locking clamping devices

# "CAM SYSTEM"



Set  
CAM SYSTEM "t"  
pag. 125



CAM SYSTEM "t"  
pag. 126



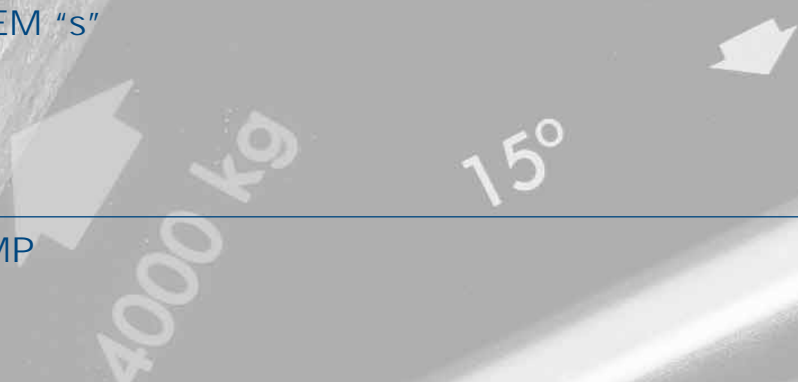
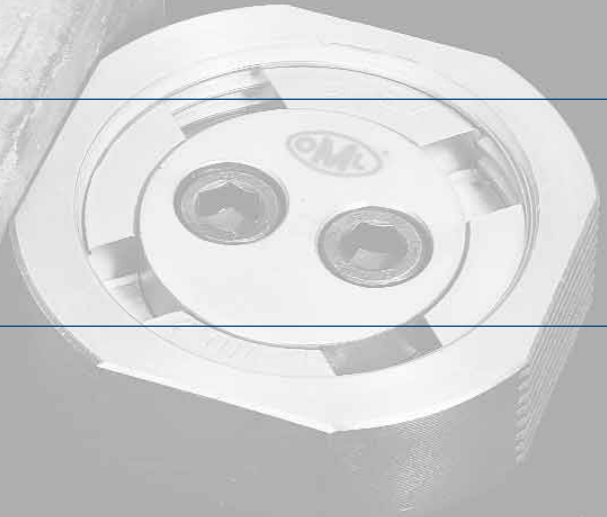
Set  
CAM SYSTEM "s"  
pag. 127



CAM SYSTEM "s"  
pag. 128

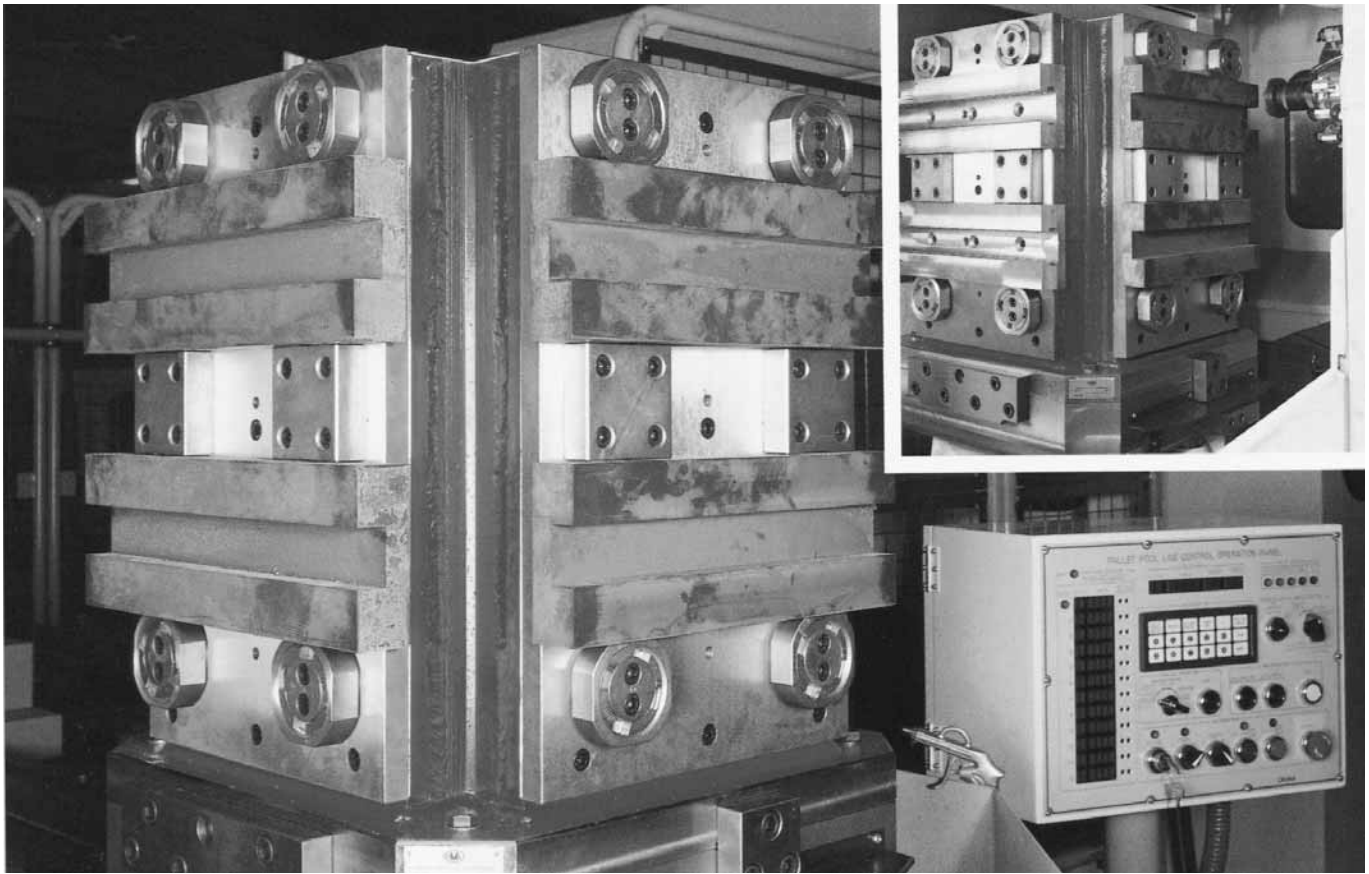


EDGE CLAMP  
pag. 130



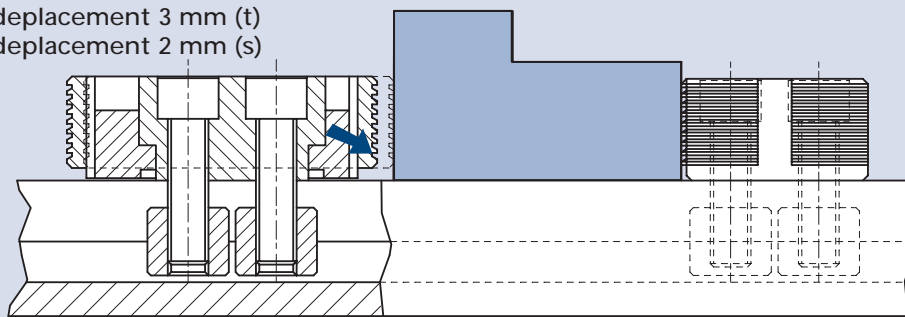
# CAM-SYSTEM

eccentric self-locking  
clamping devices

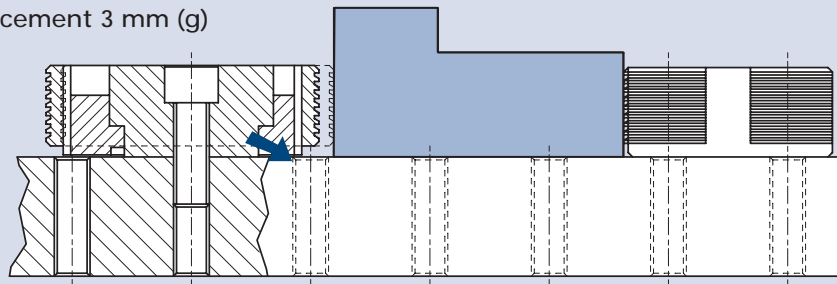


The CAM SYSTEM has been developed and patented to easily clamp workpieces with varied forms. This compact product enables double locking (Axial and Radial) using the eccentric and propeller principle. With a rotation of approximately 15°, contact is made with the workpiece with the complete clamping face of the CAM. The CAM SYSTEM clamps the workpiece with a clamping force of 4,000 kg (t) and 2,000 kg (s). CAM SYSTEM is supplied with both cap head bolts and T-nuts to suit the particular machine tool cross slots.

displacement 3 mm (t)  
displacement 2 mm (s)

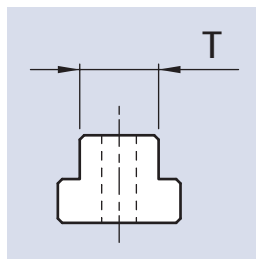


displacement 3 mm (g)

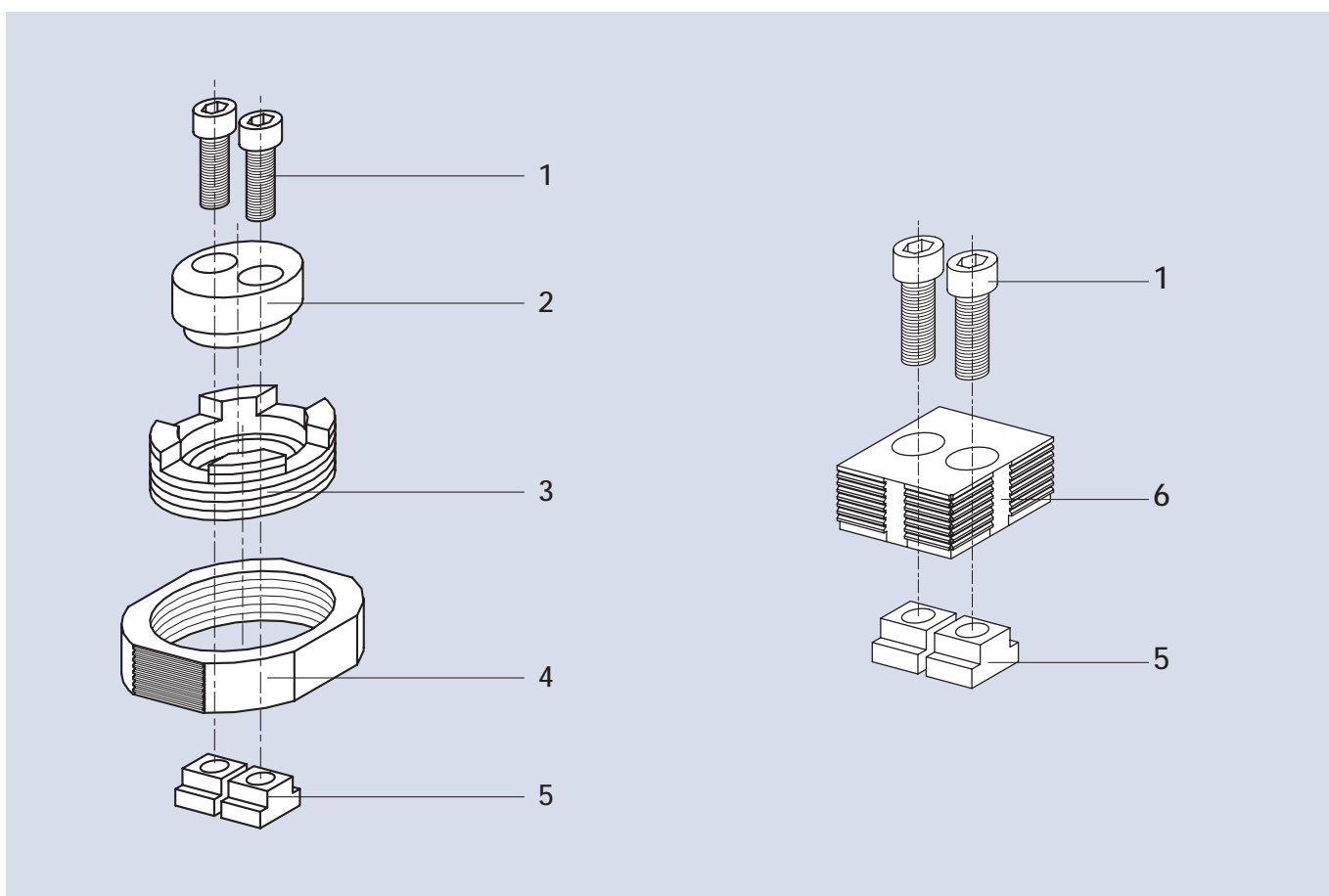




Set CAM SYSTEM "t" complete with:  
 N. 4 CAM SYSTEM "t"  
 N. 4 fixed block CAM SYSTEM 't'  
 N. 8 pair of T-nuts with screw  
 N. 1 key for CAM SYSTEM 't'  
 wooden packing case



Cod.	T mm
77 58 44 14	14
77 58 44 16	16
77 58 44 18	18
77 58 44 20	20
77 58 44 22	22

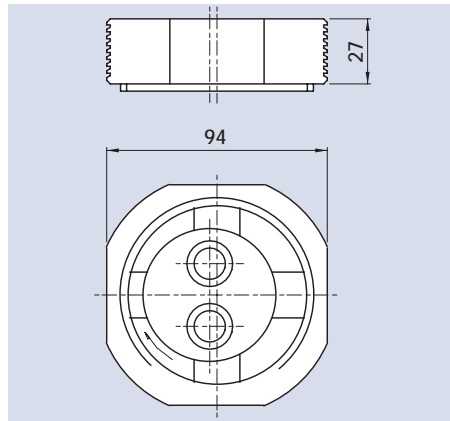


## Description

01.....Screw    03.....Eccentric element    05.....T-nuts  
 02.....Central element    04.....Clamping element    06.....Fixed block

# CAM-SYSTEM "t"

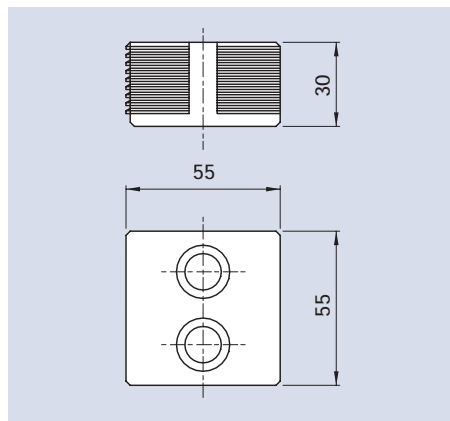
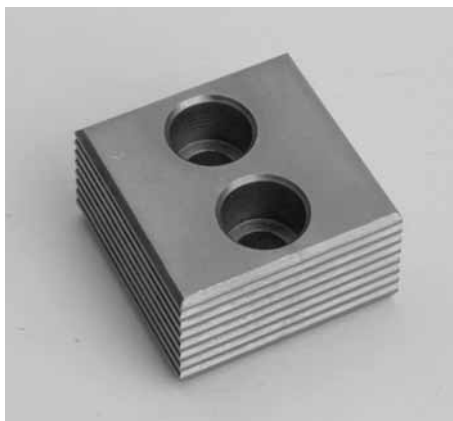
eccentric self-locking clamping devices



CAM SYSTEM "t"  
single

Cod.

58 44 50 10



Fixed block  
CAM SYSTEM "t"

Cod.

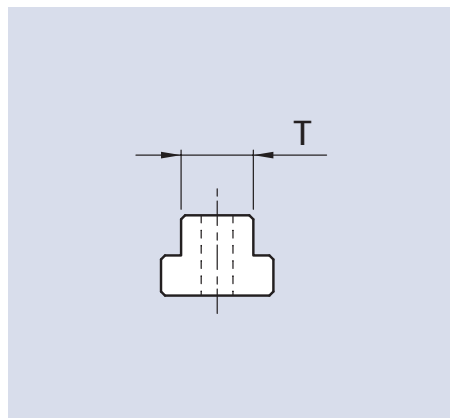
58 44 04 00



Key for  
CAM SYSTEM "t"

Cod.

58 44 08 00



Pair of T-nuts  
with screw  
CAM SYSTEM "t"

Cod.

58 44 25 93

58 44 25 94

58 44 25 95

58 44 25 96

58 44 25 97

T  
mm

14

16

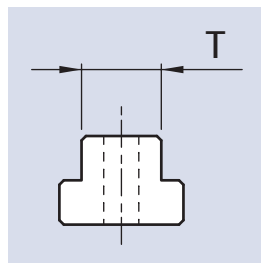
18

20

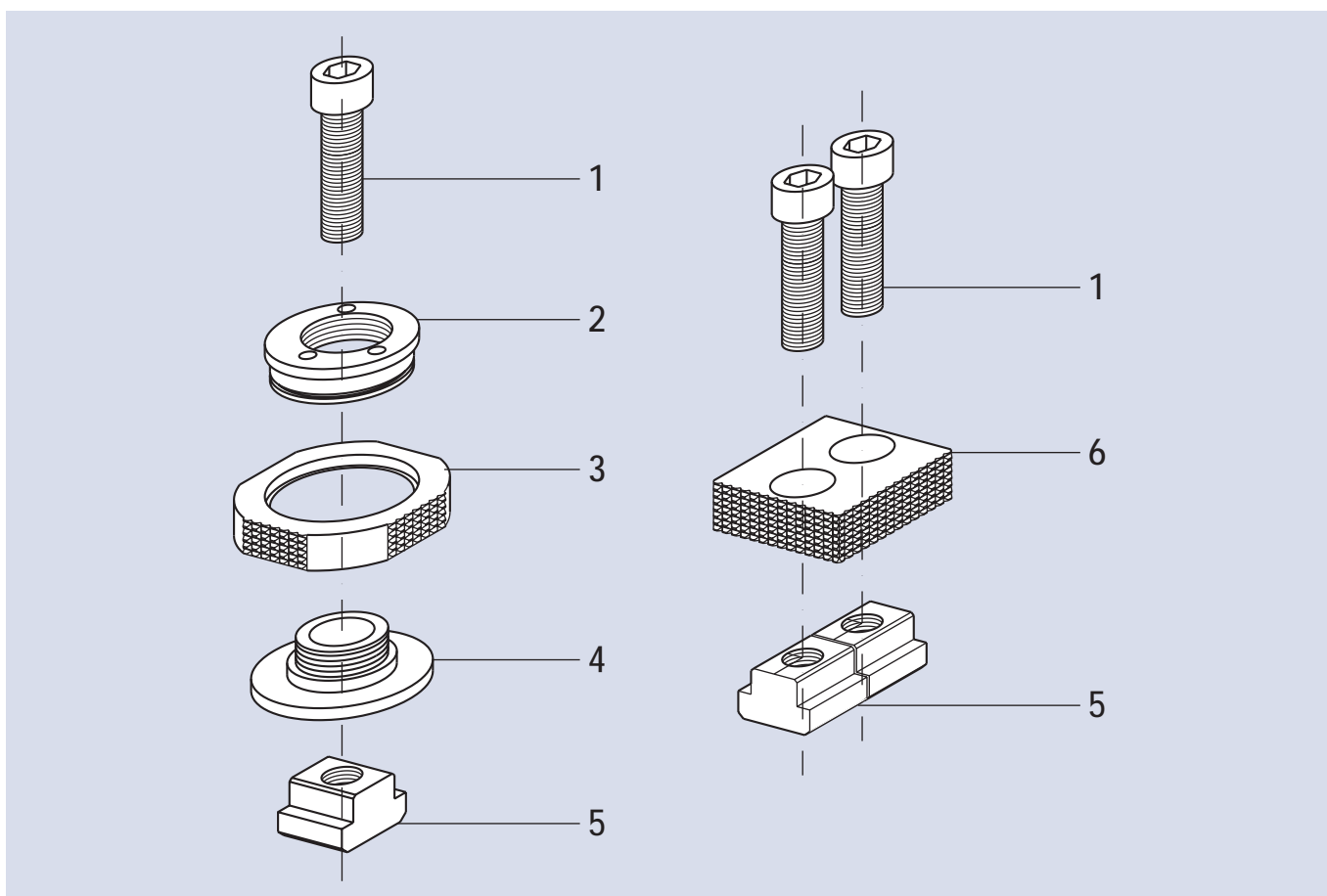
22



Set Cam SYSTEM "s" complete with:  
 N. 4 CAM SYSTEM 's"  
 N. 4 fixed block CAM SYSTEM 's"  
 N. 6 pair of T-nuts with screw  
 N. 1 Key for CAM SYSTEM 's"  
 wooden packing case



Cod.	T mm
77 58 43 14	14
77 58 43 16	16
77 58 43 18	18
77 58 43 20	20
77 58 43 22	22



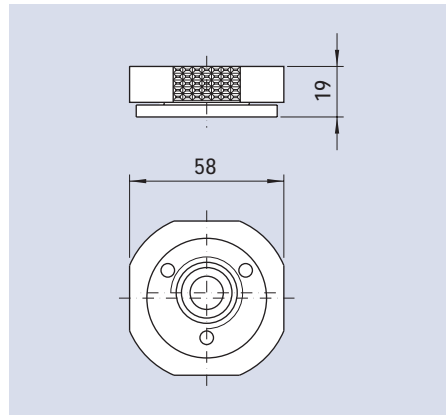
## Description

01.....Screw | 03.....Clamping element | 05.....TT-nuts  
 02.....Eccentric element | 04.....Central element | 06.....Fixed block



# CAM-SYSTEM "S"

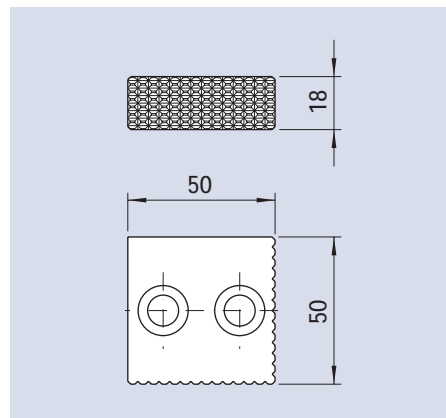
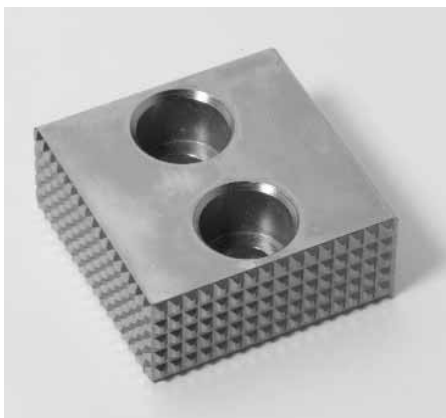
eccentric self locking clamping devices



CAM SYSTEM "s"  
single

Cod.

58 43 50 00



Fixed block  
CAM SYSTEM "s"

Cod.

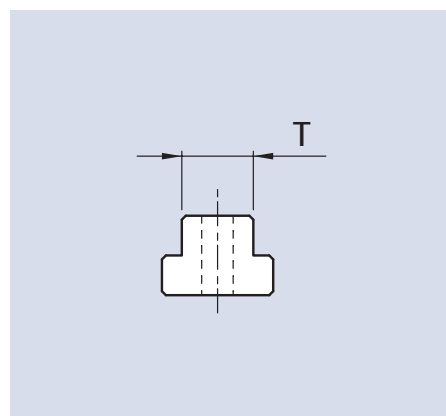
58 43 04 00



Key for  
CAM SYSTEM "s"

Cod.

58 43 08 00



Pair of T-nuts  
with screw  
CAM SYSTEM "s"

Cod.

58 43 25 93

58 43 25 94

58 43 25 95

58 43 25 96

58 43 25 97

T  
mm

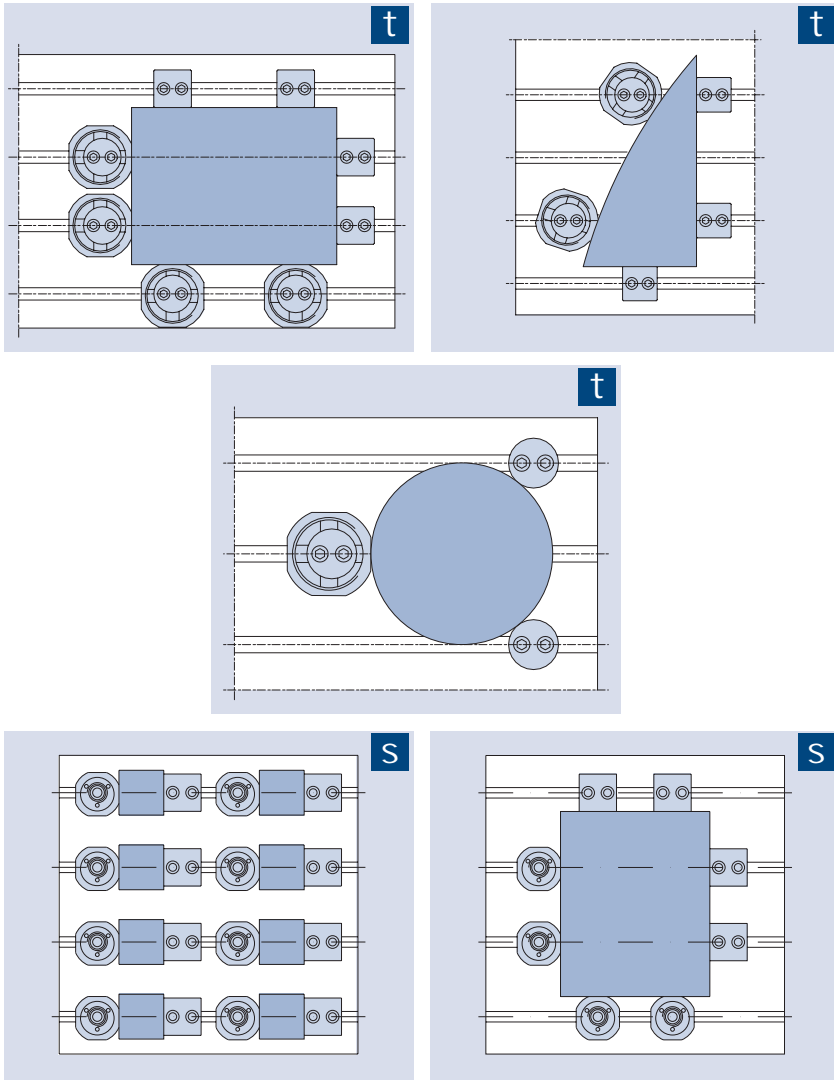
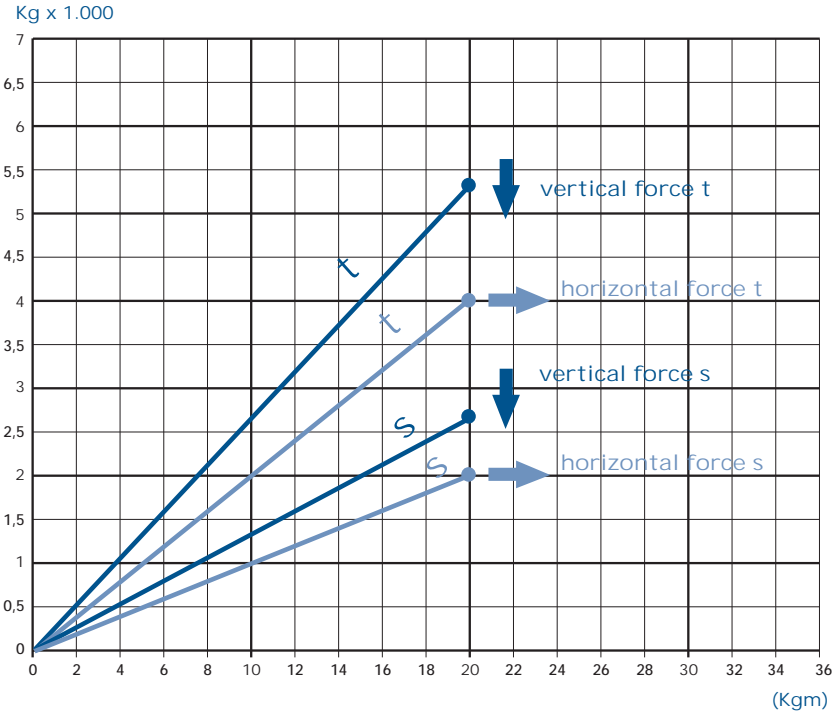
14

16

18

20

22




# EDGE CLAMP



## Edge clamp

M12x14, complete with M12 mounting.  
 Body is made of case-hardened steel and blued.  
 Clamping hook is made of case-hardened steel and blued.  
 Tightening torque 75 Nm.  
 Mounted using strength grade 10.9 screws.

Order no.	Size		H ± 0,1	G	F1 [kN]	F2 [kN]	Weight [g]
58990101	M12x14	14	65	M12	12	5	1530

Special versions (dimension H ±0.01) are available on request

## Use:

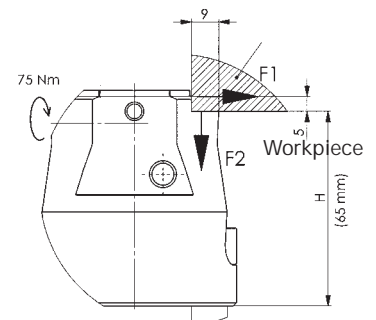
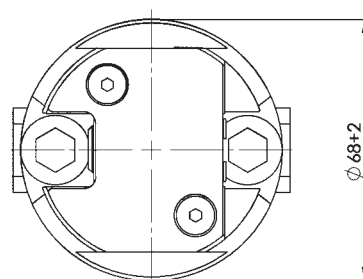
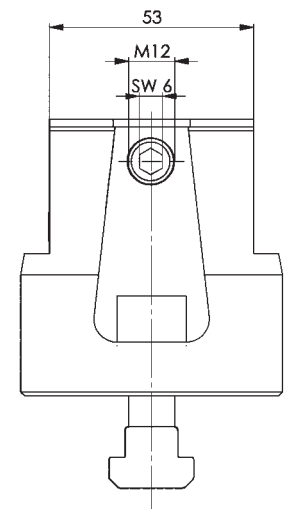
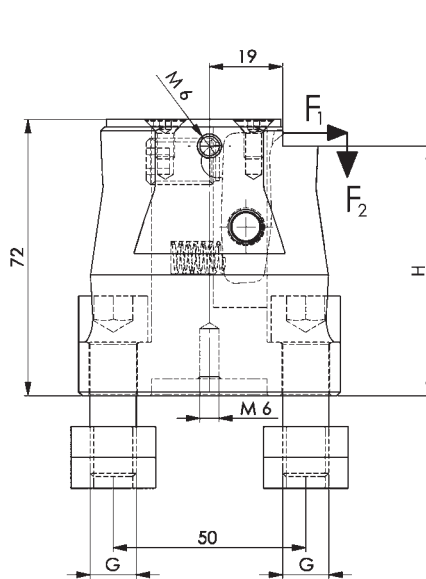
The mechanical side clamp with hold-down effect can be used as a clamping element and as a fixed stop. Moving the adjusting bolt causes hook ends to clamp the workpiece. At the same time, a pull-down effect occurs on the contact surface. Attaching a lateral stop enables the workpiece to be repeatedly clamped. When used in conjunction with base plate 58990103, the side clamp can also be placed across the table groove. In conjunction with round base plate 58990102, only along the table groove.

## Advantages:

- compact dimensions
- workpiece fastened rigid and secure through pull-down effect
- plate tension increased to make holes and grooves
- lateral plate tension to completely finish surfaces without collision contour
- lateral thread enables a stop to be fastened
- can be used for horizontal and vertical applications
- reduced tooling time and tool elements cuts tooling costs
- diverse and variable applications

## Note:

Flat sliding block 58990104  
 Enables the side clamp to be accurately positioned in the machine table groove.





# BASE PLATE, ROUND



## Base plate, round

M12x14, complete with fixing screws.  
Housing from hardened, nitride steel.  
Fastened with screws of strength class 10.9.

### Use:


Used in conjunction with side clamp 58990101 to clamp slot the table groove.

### Advantages:

- clamping along the groove achieved with the side clamp only
- workpiece mounting surface increased by 30 mm.
- same external diameter as side clamp 58990101

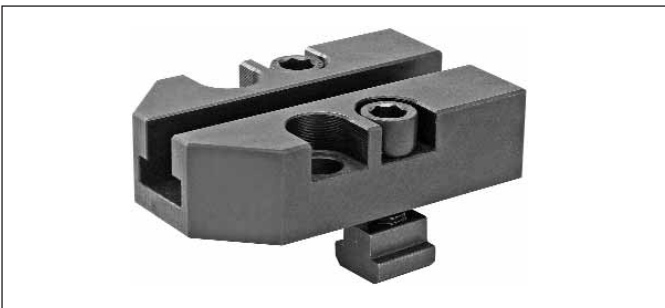
### Note:

Flat sliding block 58990104  
Enables the side clamp with round base plate to be accurately positioned in the machine table groove.

Order no.	Size		H	G	Weight [g]
58990102	M12x14	14	30	M12	910



# BASE PLATE



## Base plate

M12x14, complete with M12 mounting.  
Body is made of hardened and tempered alloy steel,  
Mounted using strength grade 10.9 screws.


### Use:

Used in conjunction with side clamp 58990101 to also clamp slot the table groove.

### Advantages:

- clamping also along the groove achieved with the lateral clamp only
- workpiece mounting surface increased by 30 mm.
- side clamp can be pushed 40 mm on the base plate

Special versions (dimension H  $\pm 0.01$ ) are available on request.

Order no.	Size		H	G	Weight [g]
58990103	M12x14	14	30	M12	1330



# Examples

