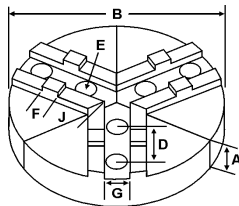
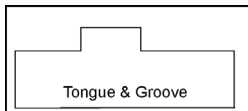
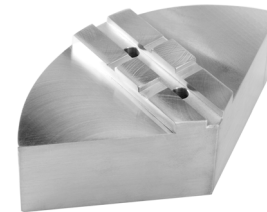


ROUND JAWS- AMERICAN STANDARD TONGUE & GROOVE

FOR USE ON: **Buck, Bison, BTC, Cushman, Huron, PBA, Amestra, SCA, Yuasa, Rohm Chucks**



- American Standard Tongue & Groove
- Round Jaws allow for complete gripping of workpiece
- Oversized jaws available
- Ideal for thin-walled or irregular shaped workpieces.
- Can be machined to fit workpiece
- Special "J" dimensions available
- Available in Aluminum & Cast Iron



OFF-CENTER TONGUE

Group No.	Chuck Size	Type	Critical Dimensions				Tongue to Front J	Pie Dia B	Hght Inch A	ALUMINUM		CAST IRON		STEEL										
			Groove Width G	Tongue Width F	Screw Size E	Hole Space D				Part Number	Price Set Of 3	Part Number	Price Set Of 3	Part Number	Price Set Of 3									
TI-50-1/2-21	10	MED. DUTY	0.500	0.750	1/2	2.125	2.200	12	5.00	12-RTG-10500A*	\$423.80	-	-	-	-									
								18	4.00	18-RTG-10400A*	\$728.78	-	-	-	-									
								8	4.00	8-RTG-10400A	\$157.22	-	-	-	-									
									6.00	8-RTG-10600A	\$249.80	-	-	-	-									
									2.00	RTG-10200A	\$130.44	RTG-10200CI	\$190.08	RTG-10200S	\$365.63									
									3.00	RTG-10300A	\$173.10	-	-	-	-									
									4.00	RTG-10400A	\$190.62	RTG-10400CI	\$337.91	RTG-10400S	\$562.77									
									6.00	RTG-10500A	\$302.45	-	-	RTG-10600S	\$786.09									
								2.125	2.200	10	2.00	12-RTG-10200A	\$191.51	-	-	-	-							
										4.00	12-RTG-10400A	\$331.00	-	-	-	-								
									12	2.50	15-RTG-10250A	\$439.39	-	-	-	-								
										4.00	15-RTG-10400A	\$539.82	-	-	-	-								
15	2.00	RTG-10205A	\$142.97	RTG-10205CI	\$190.08	-	-																	
	4.00	RTG-10405A	\$216.32	RTG-10405CI	\$337.91	-	-																	
TI-50-5/8-21	10	HEAVY DUTY	0.500	0.750	5/8	2.125	2.200	10	2.00	RTG-10205A	\$142.97	RTG-10205CI	\$190.08	-	-									
								3.00	RTG-10305A*	\$213.71	-	-	-	-										
								4.00	RTG-10405A	\$216.32	RTG-10405CI	\$337.91	-	-										
								5.00	RTG-10505A*	\$302.45	-	-	-	-										
								12	2.00	12-RTG-10205A	\$191.51	-	-	-	-									
									4.00	12-RTG-10405A	\$358.84	-	-	-	-									
								15	2.50	15-RTG-10255A*	\$439.39	-	-	-	-									
									4.00	15-RTG-10405A	\$539.82	-	-	-	-									
								TI-50-1/2-25	12	MED. DUTY	0.500	0.750	1/2	2.500	1.770	8	4.00	8-RTG-12400A	\$157.22	-	-	-	-	
																6.00	8-RTG-12600A	\$269.51	-	-	-	-		
																2.425	10	2.00	10-RTG-12200A	\$130.44	-	-	-	-
																	4.00	10-RTG-12400A	\$227.31	-	-	-	-	
3.370	12	2.00	RTG-12200A	\$172.80	RTG-12200CI	\$281.59	-									-								
	2.50	RTG-12250A	\$175.50	-	-	-	-																	
	3.00	RTG-12300A	\$267.26	-	-	-	-																	
	4.00	RTG-12400A	\$293.76	-	-	RTG-12400S	\$750.36																	
15	5.00	RTG-12500A	\$423.80	-	-	-	-																	
	2.50	15-RTG-12250A	\$439.39	15-RTG-12250CI	\$492.78	-	-																	
	4.00	15-RTG-12400A	\$539.82	-	-	-	-																	
	18	2.50	18-RTG-12250A	\$539.83	-	-	-								-									
		4.00	18-RTG-12400A	\$728.78	-	-	-	-																
	2.50	21-RTG-12250A*	\$777.03	-	-	-	-																	
TI-50-5/8-25	12	HEAVY DUTY	0.500	0.750	5/8	2.500	3.370	12	2.00	RTG-12205A	\$191.51	RTG-12205CI	\$281.59	-	-									
								2.50	RTG-12255A	\$208.60	-	-	-	-										
								4.00	RTG-12405A	\$358.84	-	-	-	-										
								5.00	RTG-12505A	\$423.80	-	-	-	-										
								15	2.50	15-RTG-12255A	\$439.39	15-RTG-12255CI	\$492.78	-	-									
									4.00	15-RTG-12405A	\$539.82	-	-	-	-									
							18	2.50	18-RTG-12255A	\$539.83	-	-	-	-										
								4.00	18-RTG-12405A	\$728.78	-	-	-	-										
							3.100	21	4.00	21-RTG-12405A*	\$971.86	-	-	-	-									

Round Jaw Material: ALUMINUM-6061-T6 Bar Stock, CAST IRON-Gray, STEEL-1018. 18" & Larger- Aluminum Casting T6
For complete list of applicable chucks, see pages 632-644. * denotes non-stock item. Please allow 1 week manufacturing time.

HARD JAWS



Group	Chuck Size	Type	Critical Dimensions				Width Inch C	OAL Inch B	Height Inch A	No. of Holes	No. of Steps	Top Step Ht S1	Mid Step Ht S2	Bot Step Ht S3	Part Number	Price Per Set	Code
			Groove Width G	Tongue Width F	Screw Size E	Hole Space D											
TI-50-1/2-21	10	MEDIUM DUTY	0.500	0.750	1/2	2.125	1.750	3.770	2.500	2	2	0.688	0.440	1.380	TG-100HJ2	\$333.33	D
							1.389	4.034	2.063	2	2	0.551	0.551	0.961	TG-100HJ2-U	\$285.00	E
							1.750	3.920	2.469	2	2	0.650	0.650	1.169	TG-100HJ2-X	\$300.00	E
TI-50-1/2-25	12	MEDIUM DUTY	0.500	0.750	1/2	2.500	1.750	4.500	2.500	2	2	0.680	0.440	1.380	TG-120HJ2	\$450.00	D
							1.586	4.585	2.063	2	2	0.591	0.591	0.882	TG-120HJ2-U	\$384.75	E
							1.750	4.550	2.500	2	2	0.650	0.650	1.200	TG-120HJ2-X	\$405.00	E
TI-50-5/8-25		HVY DTY	0.500	0.750	5/8	2.500	1.750	4.550	2.500	2	2	0.650	0.650	1.200	TG-125HJ2-X	\$435.00	E

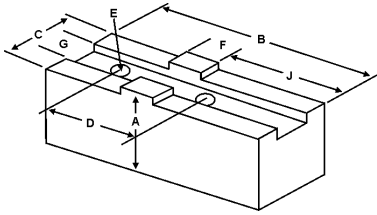
Call Us Today For All Of Your Machine Tool Needs!

2010-11 Master Catalog

SOFT JAWS- AMERICAN STANDARD TONGUE & GROOVE

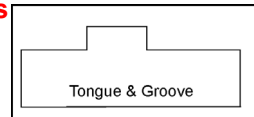
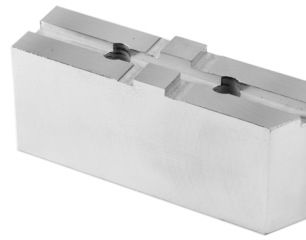
C

FOR USE ON: Amestra, Buck, Bison, BTC, Cushman, Huron, PBA, Yuasa, & Rohm Chucks



American Standard Tongue & Groove

QUANTITY DISCOUNTS!
Order **5 SETS OR MORE** of the same part number soft jaw and receive a **5% DISCOUNT!**



MADE IN THE USA			Critical Dimensions									ALUMINUM		STEEL	
Group No.	Chuck Size	Type	Groove Width G	Tongue Width F	Screw Size E	Hole Space D	Tongue to Front J	Tongue Position	Width Inch C	Length Inch B	Hght Inch A	FLAT END Part Number	Price Set Of 3	FLAT END Part Number	Price Set Of 3
TI-50-1/2-21	10	MEDIUM DUTY	0.500	0.750	1/2	2.125	2.300	Offset	1.500	4.500	2.00	TG-10200AF	\$44.55	TG-10200F	\$44.55
											2.00	TG-10200BF	\$66.47	-	-
											2.50	TG-10250AF	\$52.54	TG-10250F	\$55.67
											3.00	TG-10300AF	\$58.82	TG-10300F	\$62.24
							2.00	TG-10202AF	\$55.89	TG-10202F	\$55.89				
							3.00	TG-10302AF	\$70.69	TG-10302F	\$74.60				
							2.00	TG-10203AF	\$80.86	TG-10203F	\$49.20				
							3.00	TG-10303AF	\$88.61	TG-10303F	\$93.34				
2.00	TG-10205AF	\$49.35	TG-10205F	\$52.32											
2.50	TG-10255AF	\$56.96	TG-10255F	\$60.26											
3.00	TG-10305AF	\$61.98	TG-10305F	\$65.40											
4.00	TG-10405AF	\$74.63	TG-10405F	\$78.51											
TI-50-5/8-21	10	HEAVY DUTY	0.500	0.750	5/8	2.125	2.300	Offset	1.750	4.500	2.00	TG-10208AF*	\$42.87	TG-10208F*	\$43.85
				0.750	5/8	2.125	Center	Centered	1.750	3.938	4.00	TG-10408AF*	\$93.57	TG-10408F*	\$85.97
TI-50-5/8-21	10	10" W & S	0.500	0.750	5/8	2.125	2.125	Offset	1.750	4.25	2.50	TG-10259AF*	\$56.02	TG-10259F*	\$48.91
TI-50-1/2-25	12	MEDIUM DUTY	0.500	0.750	1/2	2.500	2.900	Offset	1.750	5.250	2.00	TG-12200AF	\$55.65	TG-12200F	\$57.54
											2.50	TG-12250AF	\$62.02	TG-12250F	\$62.38
											3.00	TG-12300AF	\$71.42	TG-12300F	\$75.34
							4.00	TG-12400AF	\$84.14	TG-12400F	\$88.42				
							6.00	TG-12600AF	\$194.46	TG-12600F	\$206.67				
							2.00	TG-12203AF	\$79.13	TG-12203F	\$60.56				
				2.50	TG-12253AF	\$93.13	TG-12253F	\$98.81							
				3.00	TG-12303AF	\$108.64	TG-12303F	\$115.17							
				4.00	TG-12403AF	\$124.56	TG-12403F	\$126.07							
				2.50	TG-12252AF	\$80.64	TG-12252F	\$66.33							
				4.00	TG-12402AF	\$119.67	TG-12402F	\$126.10							
				6.00	TG-12602AF	\$262.40	TG-12602F	\$270.26							
TI-50-5/8-25	12	12" W & S	0.500	0.750	5/8	2.500	2.500	Offset	1.750	4.875	2.50	TG-12259AF*	\$62.53	TG-12259F*	\$66.17
											4.00	TG-12409AF*	\$96.29	TG-12409F*	\$101.81
TI-50-5/8-25	12	HEAVY DUTY	0.500	0.750	5/8	2.500	2.900	Offset	2.000	5.250	2.00	TG-12205AF	\$58.70	TG-12205F	\$62.05
											2.50	TG-12255AF	\$65.55	TG-12255F	\$65.77
											3.00	TG-12305AF	\$78.65	TG-12305F	\$82.87
							4.00	TG-12405AF	\$86.03	TG-12405F	\$90.06				
							2.50	TG-12256AF	\$85.23	TG-12256F	\$90.15				
							4.00	TG-12406AF	\$119.67	TG-12406F	\$126.10				

For "Pointed" Soft Jaws, please substitute "P" for "F" in the part number. Example: TG-10200AF will be TG-10200AP. Pointed Jaws: Up to 10" add \$3.25, 12" & over add \$6.50.

Soft Jaw Material: ALUMINUM-6061-T6 Bar Stock, STEEL-1018, "B" JAWS-7075-T6 Aircraft Aluminum

For complete list of applicable chucks, see pages 632-644. * denotes non-stock item. Please allow 1 week manufacturing time.

HARD TOP JAWS

FOR 3 & 4-JAW SELF-CENTERING SCROLL CHUCKS

American Standard Tongue & Groove Jaws



NEW ITEM!



Chuck Dia	Groove Width	Tongue Width	OAL	Height	3-Jaw Chucks		4-Jaw Chucks	
					Part Number	Price Per Set	Part Number	Price Per Set
5"	0.313	0.500	2.205	1.516	TG-50HJ2-B	\$160.02	TG-50HJ2-4-B	\$201.81
6"	0.313	0.500	2.638	1.634	TG-60HJ2-B	\$196.29	TG-60HJ2-4-B	\$229.05
8"	0.313	0.500	3.347	1.713	TG-80HJ2-B	\$212.94	TG-80HJ2-4-B	\$301.38
10"	0.500	0.750	3.740	2.023	TG-100HJ2-B	\$249.51	TG-100HJ2-4-B	\$342.18
12"	0.500	0.750	4.331	2.165	TG-120HJ2-B	\$307.62	TG-120HJ2-4-B	\$421.20
15-3/4"	0.500	0.750	5.000	2.539	TG-150HJ2-B	\$417.69	TG-150HJ2-4-B	\$571.92

Call Us Or Visit Our Website For Our Complete Selection!

2010-11 Master Catalog

45

LATHE CHUCKS
LIVE CENTERS

VISE JAWS
VISE ACCESSORIES

STRAIGHT SHANK
COLLET HOLDERS

LATHE BUSHINGS
DRILL CHUCKS

CARBIDE INSERTS
THREADING/GROOVING

CUTTING TOOLS
MACHINERY

PRECISION TOOLS
DEBURRING

COOLANT/FLUIDS
TOOL STORAGE