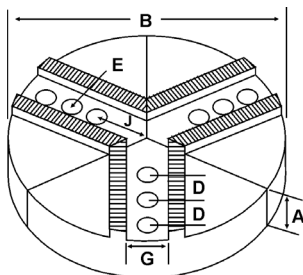
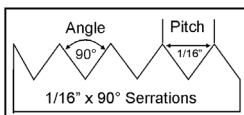
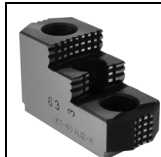
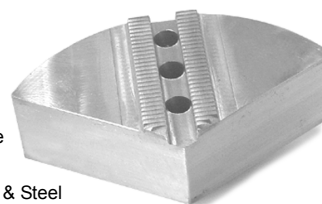


ROUND JAWS- 1/16" x 90° Serrations

FOR USE ON: **SMW Autoblok, Rohm, Pratt Burnerd & Other Chucks**



- Round Jaws allow for complete gripping of workpiece
- Oversized jaws available
- Ideal for thin-walled or irregular shaped workpieces.
- Can be machined to fit workpiece
- Max. length of serrations: 5.75"
- Special "J" dimensions available
- Available in Aluminum, Cast Iron & Steel
- **Made in the USA**



Please See Page 13 For Hard Jaws

Group
11



Group No.	Chuck Size	Critical Dimensions			Hole to Front J	Middle Hole to Front Jm	Pie Dia B	Height Inch A	No. of Holes	Industry Ref #	ALUMINUM		CAST IRON/STEEL									
		Groove Width G	Screw Size E	Hole Space D							Part Number	Price Set of 3	Part Number	Price Set of 3								
11-78-118	10 to 12	0.787 (20mm)	1/2	1.187 (30mm)	1.913	3.100	8	2.000	2	-	8-RPH-10200A	\$112.30	-	-								
							10	2.000	3	-	RPH-10200A	\$136.02	RPH-10200CI	\$190.08								
							10	2.500	3	-	-	-	RPH-10200S	\$365.63								
							10	4.000	3	-	RPH-10250A	\$189.33	-	-								
							18	2.500	3	-	18-RPH-10250A	\$539.83	-	-								
					2.900	4.087	12	2.000	3	-	12-RPH-10200A	\$191.51	12-RPH-10200CI	\$281.59								
							12	2.500	3	-	12-RPH-10250A	\$201.67	-	-								
							12	4.000	3	-	12-RPH-10400A	\$380.07	-	-								
							12	5.000	3	-	12-RPH-10500A	\$423.80	-	-								
							15	2.500	3	-	15-RPH-10250A	\$439.39	-	-								
11-82-112	11 to 12	0.827 (21mm)	5/8	1.125 (28.5mm)	3.630	-	12	2.000	2	-	RPH-11200A	\$191.51	RPH-11200CI	\$281.59								
11-82-217	10 to 12	0.827 (21mm)	1/2	2.170 (55mm)	1.855	4.025	10	2.000	3	-	10-RPH-12200A	\$147.37	10-RPH-12200CI	\$281.59								
11-82-117	10 to 12	0.827 (21mm)	1/2	1.187 (30mm)	2.875	-	12	2.500	2	-	RSM-12250A	\$238.29	-	-								
							12	4.000	2	-	RSM-12400A	\$380.07	-	-								
					2.900	4.087	12	2.000	3	-	RPH-12200A	\$191.51	RPH-12200CI	\$281.59								
11-82-118m	10	0.827 (21mm)	16mm	1.181 (30mm)	1.819	3.000	10	2.000	3	SMW10P	RSM-10200A	\$136.02	-	-								
							10	4.000	3	SMW10P1	RSM-10400A	\$193.86	-	-								
							12	2.000	3	SMW12-10P	12-RSM-10200A	\$177.32	-	-								
							15	3.000	3	SMW15-10P	15-RSM-10300A	\$425.00	-	-								
							18	3.000	3	SMW18-10P	18-RSM-10300A	\$555.00	-	-								
11-82-118	8 to 12	0.827 (21mm)	5/8	1.187 (30mm)	2.819	4.000	12	2.000	3	SMW12P	RSM-12201A	\$177.32	-	-								
							12	4.000	3	SMW12P1	RSM-12401A	\$351.92	-	-								
11-82-156	14 to 18	0.827 (21mm)	5/8	1.562 (39.5mm)	2.875	4.437	15	2.500	3	-	RPH-15250A	\$439.39	RPH-15250CI	\$492.78								
							15	3.000	3	PH15P	RPH-15300A4	\$425.00	-	-								
							15	4.000	3	-	RPH-15400A	\$539.82	-	-								
					3.438	5.000	15	4.000	3	PH15P1	RPH-15400A4	\$481.98	-	-								
															18	2.500	3	-	18-RPH-15250A	\$539.83	-	-
															18	3.000	3	PH18-15P	18-RPH-15300A4	\$650.00	-	-
					3.438	5.000	18	4.000	3	PH18-15P1	18-RPH-15400A4	\$674.80	-	-								
															18	2.500	3	-	RPH-18250A	\$539.83	-	-
															18	4.000	3	-	RPH-18400A	\$728.78	-	-
					2.875	4.437	18	4.000	3	-	RPH-18250A	\$539.83	-	-								
															21	3.000	3	PH21-15P	21-RPH-15300A4	\$699.00	-	-
															24	2.500	3	-	24-RPH-18250A	\$936.90	-	-
					3.438	5.000	24	3.000	3	PH24-15P	24-RPH-15300A4	\$995.00	-	-								
															24	4.000	3	-	24-RPH-18400A	\$1,352.54	-	-
															14 to 15	1.003 (25.5mm)	3/4	1.375 (35mm)	3.500	4.875	15	2.000
11-118-197	18	1.181 (30mm)	3/4	1.970 (50mm)	4.060	6.030	18	4.000	3	-	RPH-15410A	\$256.76	-	-								
							18	3.000	3	-	RPH-18300A	\$246.76	-	-								
							18	4.000	3	-	RPH-18400A	\$728.78	-	-								

Round Jaw Material: ALUMINUM-6061-T6 Bar Stock, CAST IRON-Gray, STEEL-1018. 18" & Larger- Aluminum Casting T6
For complete list of applicable chucks, see pages 632-644. * denotes non-stock item. Please allow 1 week manufacturing time.

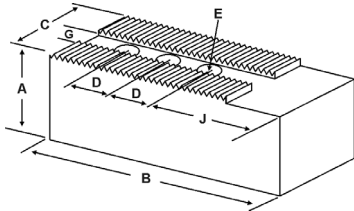
Call Us Today For All Of Your Machine Tool Needs!

2010-11 Master Catalog

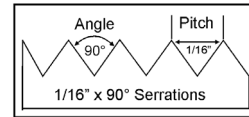
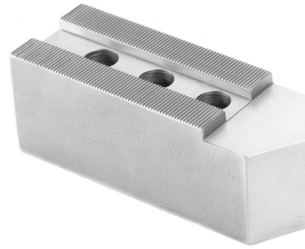
SOFT JAWS- 1/16" x 90° Serrations

C

FOR USE ON: **SMW Autoblok, Rohm, Pratt Burnerd & Other Chucks**



- Supplies maximum concentricity on finish turning operations
- Can be bored or turned to fit workpiece
- Steel jaws can be hardened
- Available flat ended or pointed for smaller diameter parts
- Special orders available
- Available in Aluminum, Steel & Aircraft Aluminum (where noted)
- **Made in the USA**



Group **11**

QUANTITY DISCOUNTS!
Order **5 SETS OR MORE** of the same part number soft jaw and receive a **5% DISCOUNT!**

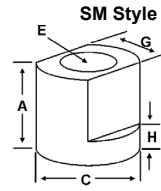
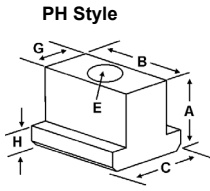
Group No.	Chuck Size	Critical Dimensions			Hole to Front J	Width Inch C	Length Inch B	Hght Inch A	No. of Holes	ALUMINUM		STEEL				
		Groove Width G	Screw Size E	Hole Space D						FLAT END Part Number	Price Set Of 3	FLAT END Part Number	Price Set Of 3			
I1-78-118 PBA 15	10 - 12	0.787 (20mm)	1/2	1.187 (30mm)	2.250	1.75	5.250	2.50	3	PH-10250AF	\$69.18	PH-10250F	\$60.42			
								4.00	3	PH-10400AF	\$101.70	PH-10400F	\$83.28			
								2.50	3	PH-10252AF	\$73.79	PH-10252F	\$68.14			
								4.00	3	PH-10402AF	\$94.75	PH-10402F	\$84.79			
I1-82-102	10-12	0.826	16mm	1.102	2.460	1.75	4.750	2.00	2	PB-12200AF	\$63.15	PB-12200F	\$56.92			
I1-82-112	11 - 12	0.827 (21mm)	5/8	1.125 (28.5mm)	2.440	2.00	4.750	3.00	2	PH-11300AF*	\$78.65	PH-11300F*	\$49.77			
							5.750	3.00	2	PH-11307AF*	\$85.48	PH-11307F*	\$56.87			
I1-82-117	10 - 12	0.827 (21mm)	1/2	1.187 (30mm)	2.250	1.75	5.250	2.50	3	PH-12250AF	\$57.36	PH-12250F	\$60.42			
								4.00	3	PH-12400AF	\$79.93	PH-12400F	\$83.84			
								2.875	2.00	5.250	2.50	2	SM-12250AF	\$78.09	SM-12250F	\$82.68
								4.00	2	SM-12400AF	\$98.28	SM-12400F	\$103.35			
I1-82-118 SMW Autoblok BHD-250/ 305/315	8 - 12	0.827 (21mm)	5/8	1.187 (30mm)	1.963	1.50	3.750	2.00	2	PH-8205AF	\$50.64	PH-8205F	\$54.05			
								4.00	2	PH-8405AF	\$67.58	PH-8405F	\$71.55			
								2.875	2.00	5.250	2.50	2	AT-12250AF	\$78.09	AT-12250F	\$82.68
								4.00	2	AT-12400AF	\$109.71	AT-12400F	\$115.74			
I1-82-125	10 - 13	0.827 (21mm)	5/8	1.250 (32mm)	2.130	1.75	4.000	2.25	2	PB-10250AF*	\$51.66	PB-10250F	\$68.17			
								2.630	2.00	4.500	2.50	2	PB-12250AF*	\$63.98	PB-12250F	\$82.68
I1-82-156	14 - 18	0.827 (21mm)	5/8	1.562 (39.5mm)	2.875	2.00	6.750	2.50	3	PH-15250AF	\$93.87	PH-15250F	\$99.20			
								4.00	3	PH-15400AF	\$118.18	PH-15400F	\$124.01			
								2.50	3	PH-16250AF	\$112.95	PH-16250F	\$95.39			
								4.00	3	PH-16400AF	\$144.07	PH-16400F	\$127.18			
I1-100-137	14 - 15	1.003 (25.5mm)	20mm	1.375 (35mm)	2.940	2.25	5.500	3.50	2	PH-15351AF*	\$92.51	PH-15351F*	\$70.21			
								6.250	3.50	2	PH-153517AF*	\$105.14	PH-153517F*	\$80.24		
I1-100-175	16	1.000 (25.5mm)	3/4	1.750 (44.5mm)	3.500	2.00	6.000	3.00	2	PB-16300AF*	\$98.20	PB-16300F*	\$79.83			
I1-118-197	18	1.181 (30mm)	20mm	1.970 (50mm)	3.310	2.50	8.000	3.00	3	PH-18300AF*	\$152.25	PH-18300F*	\$160.22			
								5.00	3	PH-18500AF*	\$266.54	PH-18500F*	\$280.50			

For "Pointed" Soft Jaws, please substitute "P" for "F" in the part number. Example: PH-10250AF will be PH-10250AP.
Pointed Jaws: Up to 10" add \$3.25, 12" & over add \$6.50.
Soft Jaw Material: ALUMINUM-6061-T6 Bar Stock, STEEL-1018, "B" JAWS-7075-T6 Aircraft Aluminum
For complete list of applicable chucks, see pages 632-644. * denotes non-stock item. Please allow 1 week manufacturing time.

TEE NUTS & SCREWS



FREE SCREWS!
1 High Grade Socket Head Cap Screw Provided With Each Tee Nut!



Chuck Size	Critical Dimensions						1 Free Screw Included With Each Tee Nut			
	Heel Height H	Groove Width G	Screw Size E	Hght Inch A	Width Inch C	Length Inch B	Tee Nut Part Number	Price Each	Screw Part Number	Price Each
10 - 12	0.425	0.825 (21mm)	1/2"-13 x 1.50"	1.168	-	1.100	SM-120TN	\$22.44	S1/213150	\$2.00
11 - 18	0.325	0.785 (20mm)	1/2"-13 x 1.50"	0.850	1.000	1.000	PH-100TN	\$21.20	S1/213150	\$2.00
11 - 18	0.430	0.827 (21mm)	5/8"-11 x 1.50"	1.000	1.000	1.115	PH-150TN	\$24.24	S5/811150	\$3.00

Call Us Or Visit Our Website For Our Complete Selection!

LATHES CHUCKS
LIVE CENTERS
VISE JAWS
VISE ACCESSORIES
STRAIGHT SHANK
COLLET HOLDERS
LATHE BUSHINGS
DRILL CHUCKS
CARBIDE INSERTS
THREADING/GROOVING
CUTTING TOOLS
MACHINERY
PRECISION TOOLS
DEBURRING
COOLANT/FLUIDS
TOOL STORAGE