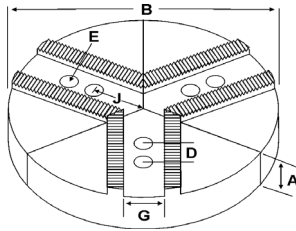
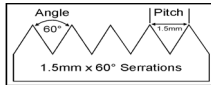
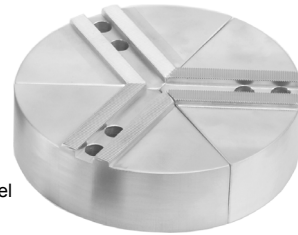


ROUND JAWS- 1.5 mm x 60° Serrations

FOR USE ON: **Kitagawa, Samchully, Strong, MMK, SMW Autoblok, Howa & Hitachi-Seiki Chucks**



- Round Jaws allow for complete gripping of workpiece
- Oversized jaws available
- Ideal for thin-walled or irregular shaped workpieces.
- Can be machined to fit workpiece
- Max. length of serrations: 5.75"
- All jaws have 2 holes
- Special "J" dimensions available
- Available in Aluminum, Cast Iron & Steel
- **Made in the USA**



Please See Page 12 For Hard Jaws

Group **K1**



CHUCK JAWS
LATHE WORKHOLDING

MACHINE VISES
MAGNETIC CHUCKS

RETENTION KNOBS
ER, DA, TG COLLETS

TOOLHOLDERS
TAP HOLDERS

INDEXABLE DRILLS
TURNING & BORING

ENDMILLS, DRILLS
TAPS & REAMERS

ABRASIVES
MEASURING TOOLS

MRO & SAFETY
FLAT STOCK/DRILL ROD

Group No.	Chuck Size	Critical Dimensions							ALUMINUM		CAST IRON		STEEL				
		Groove Width G	Screw Size E	Hole Space D	Hole to Front J	Pie Dia B	Height Inch A	Industry Ref #	Part Number	Price Set of 3	Part Number	Price Set of 3	Part Number	Price Set of 3			
K1-16-30	10	0.630 (16mm)	12mm	1.181 (30mm)	2.155	8	2.00	-	8-RKT-10200A	\$112.30	-	-	-	-			
KITAGAWA					2.375	10	2.00	-	RKT-10200A	\$130.44	RKT-10200CI	\$190.08	RKT-10200S	\$365.63			
B-10, B-210, BL-210, BLT-210					2.500†	10	2.00	KTT10P	RKT-10200A4	\$130.44	-	-	-	-			
Big-Bore					2.650†	10	2.00	AKT10FG	RKT-10200A5	\$130.44	-	-	-	-			
BB210†					2.750†	10	2.00	HAR10MSHP	RHA-10200A	\$130.44	-	-	-	-			
Samchully					2.375	10	2.50	-	RKT-10250A	\$189.33	-	-	-	-			
HS10					3.00	-	-	RKT-10300A	\$173.10	-	-	-	-	RKT-10300S	\$476.92		
STRONG					2.650†	10	3.00	AKT10MHFG	RKT-10300A5	\$173.10	-	-	-	-			
N210					2.375	10	4.00	-	RKT-10400A	\$190.62	RKT-10400CI	\$337.91	RKT-10400S	\$562.77			
MMK					2.500†	10	4.00	KTT10P1	RKT-10400A4	\$202.41	-	-	-	-			
HA 8-11, HA6-10, HA8-10					2.650†	10	3.00	AKT10EHFG	RKT-10400A5	\$202.41	-	-	-	-			
HOWA					2.750†	10	4.00	HAR10MSHP1	RHA-10400A	\$202.41	-	-	-	-			
H3KT10					2.375	10	5.00	-	RKT-10500A	\$302.45	-	-	-	-			
SMW					6.00	-	-	RKT-10600A	\$390.74	-	-	-	-	RKT-10600S	\$786.09		
Autoblok ANM 250, BBM-250, BHM-250					8.00	-	-	RKT-10800A	\$585.36	-	-	-	-	-			
					2.500†	10	6.00	KTT10P6	RKT-10600A4	\$390.74	-	-	-	-			
					2.375	12	2.00	-	12-RKT-10200A	\$180.99	12-RKT-10200CI	\$268.18	-	-			
					2.500†	12	2.00	KTT12-10P	12-RKT-10200A4	\$180.99	-	-	-	-			
					2.375	12	2.50	-	12-RKT-10250A	\$190.52	-	-	-	-			
					4.00	-	-	12-RKT-10400A	\$331.00	-	-	-	-	-			
					2.500†	12	4.00	KTT12-10P1	12-RKT-10400A4	\$331.00	-	-	-	-			
					2.375	15	2.50	-	15-RKT-10250A	\$439.39	15-RKT-10250CI	\$492.78	-	-			
					2.500†	15	3.00	KTT15-10P	15-RKT-10300A4	\$459.00	-	-	-	-			
					2.375	15	4.00	-	15-RKT-10400A	\$539.82	-	-	-	-			
					2.500†	15	4.00	KTT15-10P1	15-RKT-10400A4	\$520.54	-	-	-	-			
					15	6.00	-	15-RKT-10600A*	\$1,020.28	-	-	-	-	-			
					18	2.50	-	18-RKT-10250A	\$539.50	-	-	-	-	-			
					2.500†	18	3.00	KTT18-10P	18-RKT-10300A4	\$599.40	-	-	-	-			
					2.375	18	4.00	-	18-RKT-10400A	\$728.78	-	-	-	-			
					2.500†	18	4.00	KTT18-10P1	18-RKT-10400A4	\$728.78	-	-	-	-			
	2.375	21	3.00	KTT21-10P	21-RKT-10300A4	\$971.86	-	-	-	-							
	2.500†	21	4.00	-	21-RKT-10400A	\$971.86	-	-	-	-							
	2.375	21	4.00	KTT21-10P1	21-RKT-10400A4	\$971.86	-	-	-	-							
	2.500†	21	4.00	KTT21-10P1	21-RKT-10400A4	\$971.86	-	-	-	-							
	2.375	24	4.00	-	24-RKT-10400A*	\$1,352.54	-	-	-	-							
K1-16-32	10	0.630 (16mm)	12mm	1.250	2.375	10	2.00	-	RMT-10200A	\$130.44	RMT-10200CI	\$190.08	RMT-10200S	\$365.63			
1.260				2.875	10	2.00	MTT10P	RMT-10200A4	\$130.44								
1.250 (32mm)				2.375	10	2.50	-	RMT-10250A	\$189.33	-	-	-	-				
3.00						-	RMT-10300A	\$173.10	-	-	-	RMT-10300S	\$476.92				
4.00						-	RMT-10400A	\$201.42	RMT-10400CI	\$337.91	-	-					
1.260				2.875	10	4.00	MTT10P1	RMT-10400A4	\$202.41	-	-	-	-				
1.250 (32mm)				2.375	10	5.00	-	RMT-10500A	\$302.45	-	-	-	-				
						6.00	-	RMT-10600A	\$421.56	-	-	-	-				
						2.00	-	12-RMT-10200A	\$191.51	-	-	-	-				
						4.00	-	12-RMT-10400A	\$331.00	-	-	-	-				
						2.50	-	15-RMT-10250A	\$439.39	-	-	-	-				
						4.00	-	18-RMT-10400A*	\$728.78	-	-	-	-				

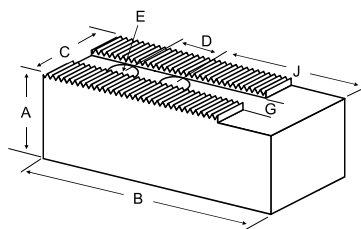
Round Jaw Material: ALUMINUM-6061-T6 Bar Stock, CAST IRON-Gray, STEEL-1018. 18" & Larger- Aluminum Casting T6
For complete list of applicable chucks, see pages 632-644. * denotes non-stock item. Please allow 1 week manufacturing time.

Call Us Today For All Of Your Machine Tool Needs!

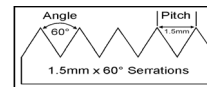
SOFT JAWS- 1.5 mm x 60° Serrations

C

FOR USE ON: **Kitagawa, Samchully, Strong, MMK, SMW Autoblok, Howa & Hitachi-Seiki Chucks**



- Supplies maximum concentricity on finish turning operations
- Can be bored or turned to fit workpiece
- Steel jaws can be hardened
- Available flat ended or pointed for smaller diameter parts
- Special orders available
- Available in Aluminum, Steel & Aircraft Aluminum (where noted)



Group

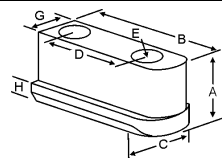
K1

QUANTITY DISCOUNTS!
Order **5 SETS OR MORE** of the same part number soft jaw and receive a **5% DISCOUNT!**

Group No.	Chuck Size	Critical Dimensions			Hole to Front J	Width Inch C	Length Inch B	Hght Inch A	No. of Holes	ALUMINUM		STEEL	
		Groove Width G	Screw Size E	Hole Space D						FLAT END Part Number	Price Set Of 3	FLAT END Part Number	Price Set Of 3
K1-16-30 KITAGAWA B-10, B-210, BL-210, BLT-210 Big-Bore BB210† Samchully HS10 HH210 STRONG N210 MMK HA 8-11, HA6-10, HA8-10 HOWA H3KT10 SMW Autoblok ANM 250, BBM-250, BHM-250	10	0.630 (16mm)	12mm	1.181 (30mm)	2.375	1.500	4.500	2.000	2	KT-10200AF	\$46.71	KT-10200F	\$42.23
								2.000	2	KT-10200BF	\$65.47	-	-
								3.000	2	KT-10300AF	\$54.81	KT-10300F	\$56.06
								3.000	2	KT-10300BF	\$91.64	-	-
								4.000	2	KT-10400AF	\$67.23	KT-10400F	\$69.29
								4.000	2	KT-10400BF	\$113.19	-	-
					5.000	2	KT-10500AF	\$178.29	KT-10500F	\$157.68			
					6.000	2	KT-10600AF	\$222.74	KT-10600F	\$238.46			
					2.000	2	KT-10202AF*	\$59.71	KT-10202F*	\$57.10			
					2.000	2	KT-10201AF	\$56.32	KT-10201F	\$45.39			
					2.000	2	KT-10201BF	\$85.31	-	-			
					3.000	2	KT-10301AF	\$73.43	KT-10301F	\$62.05			
					4.000	2	KT-10401AF	\$84.22	KT-10401F	\$78.52			
					2.000	2	KT-10205AF	\$66.42	KT-10205F	\$70.41			
2.000	2	KT-10205BF	\$94.71	-	-								
3.000	2	KT-10305AF	\$80.76	KT-10305F	\$85.15								
4.000	2	KT-10405AF	\$93.58	KT-10405F	\$98.25								
HURON EQUIVALENT	1.750	4.750	2.000	-	-	-	KT-10	\$46.44					
			3.000	-	-	-	KT-10MH	\$61.56					
			4.000	-	-	-	KT-10EH	\$72.36					
			2.000	-	-	-	KT-10PL	\$58.32					
			3.000	-	-	-	KT-10MHPL	\$70.20					
			4.000	-	-	-	KT-10EHPL	\$79.92					
			2.000	2	MT-10200AF	\$55.32	MT-10200F	\$58.96					
			3.000	2	MT-10300AF	\$67.88	MT-10300F	\$72.06					
			4.000	2	MT-10400AF	\$79.62	MT-10400F	\$75.70					
			5.000	2	MT-10500AF	\$178.29	MT-10500F	\$190.77					
K1-16-32	10	0.630 (16mm)	12mm	1.250 (32mm)	2.375	1.500	2.000	2	MT-10201AF	\$59.71	MT-10201F	\$63.59	
							3.000	2	MT-10301AF	\$73.43	MT-10301F	\$77.91	
							4.000	2	MT-10401AF	\$84.22	MT-10401F	\$89.02	
							5.000	2	MT-10500AF	\$178.29	MT-10500F	\$190.77	

For "Pointed" Soft Jaws, please substitute "P" for "F" in the part number. Example: KT-10200AF will be KT-10200AP. Add \$3.25 For Pointed Jaws
Soft Jaw Material: ALUMINUM-6061-T6 Bar Stock, STEEL-1018 or 1050, "B" JAWS-7075-T6 Aircraft Aluminum
For complete list of applicable chucks, see pages 632-644.* denotes non-stock item-Please allow 1 week manufacturing time.

JAW NUTS & SCREWS



USST

Chuck Make & Model	Chuck Size	Critical Dimensions							2 Screws Included With Each Jaw Nut			
		Heel Height H	Groove Width G	Screw Size Pitch & Length E	Hole Space D	Hght Inch A	Width Inch C	Length Inch B	Jaw Nut Part Number	Price Each	Screw Order Number	Price Each
Kitagawa: B-210,BT-210 Strong: N210 MMK:H-10,HA8-11 Samchully: HS-10	10	0.335	0.628 (16mm)	M12-1.75x30mm	1.181 (30mm)	0.846	0.886	1.981	KT-100JN	\$25.75	M1217530	\$2.00
Kitagawa:B-10,HOB-10	10	0.374	0.628 (16mm)	M12-1.75x35mm	1.181 (30mm)	1.000	0.886	2.160	KT-101JN	\$31.80	M1217535	\$2.00
MMK:ZA_-10	10	0.315	0.628 (16mm)	M12-1.75x35mm	1.181 (30mm)	0.906	0.906	1.971	MT-101JN	\$43.12	M1217535	\$2.00
Hitachi-Seiki ZA/ZA_-10	10	0.315	0.628 (16mm)	M12-1.75x35mm	1.259 (32mm)	0.906	0.906	2.050	MT-100JN	\$31.80	M1217535	\$2.00
Howa: HO15M12,HO22M12	10	0.374	0.708 (18mm)	M14-2.00x40mm	1.181 (30mm)	1.083	0.945	2.360	HO-100JN	\$31.80	M1420040	\$2.00

Call Us Or Visit Our Website For Our Complete Selection!

2010-11 Master Catalog

25

LATHE CHUCKS
LIVE CENTERS

VISE JAWS
VISE ACCESSORIES

STRAIGHT SHANK
COLLET HOLDERS

LATHE BUSHINGS
DRILL CHUCKS

CARBIDE INSERTS
THREADING/GROOVING

CUTTING TOOLS
MACHINERY

PRECISION TOOLS
DEBURRING

COOLANT/FLUIDS
TOOL STORAGE