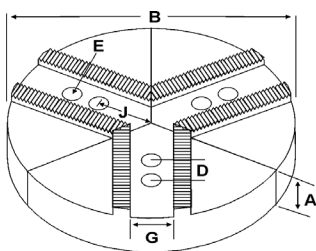
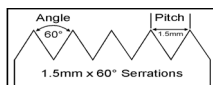


ROUND JAWS- 1.5 mm x 60° Serrations

FOR USE ON: **Kitagawa, Samchully, Strong, MMK, SMW Autoblok, Howa & Hitachi-Seiki Chucks**



- Round Jaws allow for complete gripping of workpiece
- Oversized jaws available
- Ideal for thin-walled or irregular shaped workpieces.
- Can be machined to fit workpiece
- Max. length of serrations: 5.75"
- All jaws have 2 holes
- Special "J" dimensions available
- Available in Aluminum, Cast Iron & Steel
- **Made in the USA**



Group

K1



Group No.	Chuck Size	Critical Dimensions				Hole to Front J	Pie Dia B	Height Inch A	Industry Ref #	ALUMINUM		CAST IRON/STEEL				
		Groove Width G	Screw Size E	Hole Space D	Part Number					Price Set of 3	Part Number	Price Set of 3				
K1-18-30	12	0.709 (18mm)	14mm	1.181 (30mm)	2.375°	10	2.00	-	RHO-10200A	\$147.37	RHO-10200CI	\$190.08				
KITAGAWA B-12, BT-12, HO-12, HOB-12, HOH-12					3.000	10	2.00	HOW27M10P	RHO-10200A4	\$136.45	-	RHO-10200S	\$365.63			
SAMCHULLY HAH12, HCH12					2.375°	10	2.50	-	RHO-10250A	\$189.33	-	-	-			
							3.00	-	RHO-10300A	\$213.71	-	-	-			
							3.00	-	-	-	RHO-10300S	\$476.92				
							4.00	-	RHO-10400A	\$227.31	RHO-10400CI	\$337.91				
							3.000	10	4.00	HOW27M10P1	RHO-10400A4	\$210.47	-	-		
MMK H-12, HA8-12, ZA8-12, ZJA8-12					2.375°	10	5.00	-	RHO-10500A	\$302.45	-	-	-			
							6.00	-	RHO-10600A*	\$422.85	-	-				
							2.00	-	12-RHO-10200A	\$191.51	-	-				
							3.00	-	12-RHO-10300A*	\$315.85	-	-				
							4.00	-	12-RHO-10400A	\$380.07	-	-				
HOWA HO15M12, HO22M10, HO24M10, HO27M10					2.375°	15	2.50	-	15-RHO-10250A*	\$439.39	-	-				
							4.00	-	15-RHO-10400A*	\$539.82	-	-				
							1.250°	8	2.00	-	8-RKT-12200A	\$112.30	-	-		
							10	2.00	-	10-RKT-12200A*	\$130.44	-	-			
(some mfg's refer to this as .710)					12	0.709 (18mm)	14mm	1.181 (30mm)	2.875	12	2.00	-	RKT-12200A	\$180.99	RKT-12200CI	\$281.59
									12	2.00	-	-	-	RKT-12200S	\$428.57	
									3.500	12	2.00	KTT12P	RKT-12200A5	\$174.96	-	-
									2.875	12	2.50	-	RKT-12250A	\$175.50	-	-
									3.290	12	2.50	AKT12FG	RKT-12250A4	\$175.50	-	-
									2.875	12	3.00	-	RKT-12300A	\$267.26	-	-
											4.00	-	RKT-12400A	\$293.76	RKT-12400S	\$825.40
									3.500	12	4.00	KTT12P1, AKT12MHFG	RKT-12400A5	\$293.76	-	-
									2.875	12	5.00	-	RKT-12500A	\$423.80	-	-
									3.290	12	5.00	AKT12EHFG	RKT-12500A4	\$423.80	-	-
									2.875	12	6.00	-	RKT-12600A	\$558.39	RKT-12600S	\$1,154.40
									2.875	15	2.50	-	15-RKT-12250A	\$439.39	15-RKT-12250CI	\$492.78
									3.500	15	3.00	KTT15-12P	15-RKT-12300A5	\$459.00	-	-
									2.875	15	4.00	-	15-RKT-12400A	\$539.82	-	-
	3.500	15	4.00	KTT15-12P1					15-RKT-12400A4	\$513.00	-	-				
2.875	18	2.50	-	18-RKT-12250A	\$539.50	-	-									
3.500	18	3.00	KTT18-12P	18-RKT-12300A5	\$599.40	-	-									
2.875	18	4.00	-	18-RKT-12400A	\$728.78	-	-									
3.500	18	4.00	KTT18-12P1	18-RKT-12400A5	\$728.78	-	-									
			2.00	KTT21-12P2	21-RKT-12200A5	\$599.40	-	-								
			2.875	21	2.50	-	21-RKT-12250A	\$777.03	-	-						
3.500	21	3.00	KTT21-12P	21-RKT-12300A5	\$754.92	-	-									
2.875	21	4.00	-	21-RKT-12400A	\$971.86	-	-									
3.500	21	4.00	KTT21-12P1	21-RKT-12400A5	\$971.86	-	-									
2.875	24	2.50	-	24-RKT-12250A	\$936.90	-	-									
			4.00	-	24-RKT-12400A*	\$1,352.54	-	-								
K1-18-32	12	0.710 (18mm)	14mm	1.260 (32mm)	2.875	12	2.00	-	RMT-12200A	\$180.99	-	-				
2.50					-	RMT-12250A	\$186.30	-	-							
3.00					-	RMT-12300A	\$315.85	-	-							
K1-18-38	12	0.709 (18mm)	14mm	1.488 (38mm)	2.875	12	2.00	-	RKT-12204A	\$191.51	RKT-12204CI	\$281.59				
4.00					-	RKT-12404A	\$380.07	-	-							

Round Jaw Material: ALUMINUM-6061-T6 Bar Stock, CAST IRON-Gray, STEEL-1018. 18" & Larger- Aluminum Casting T6
 For complete list of applicable chucks, see pages 632-644. * denotes non-stock item. Please allow 1 week manufacturing time.
 ° Will not reach center of a 12" chuck

Call Us Today For All Of Your Machine Tool Needs!

2010-11 Master Catalog

CHUCK JAWS
LATHE WORKHOLDING

MACHINE VISES
MAGNETIC CHUCKS

RETENTION KNOBS
ER, DA, TG COLLETS

TOOLHOLDERS
TAP HOLDERS

INDEXABLE DRILLS
TURNING & BORING

ENDMILLS, DRILLS
TAPS & REAMERS

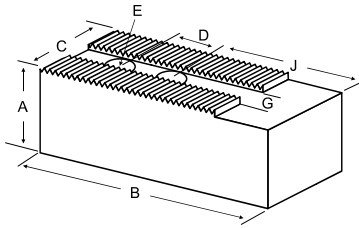
ABRASIVES
MEASURING TOOLS

MRO & SAFETY
FLAT STOCK/DRILL ROD

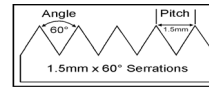
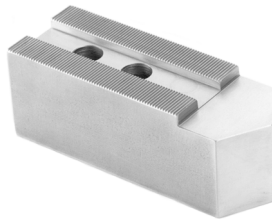
SOFT JAWS- 1.5 mm x 60° Serrations

C

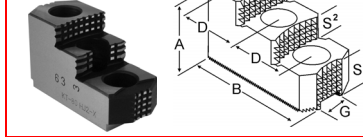
FOR USE ON: Kitagawa, Samchully, Strong, MMK, SMW Autoblok, Howa & Hitachi-Seiki Chucks



QUANTITY DISCOUNTS!
Order **5 SETS OR MORE** of the same part number soft jaw and receive a **5% DISCOUNT!**



HARD JAWS
(Please see table in middle of page)



Group **K1**

Group No.	Chuck Size	Critical Dimensions				ALUMINUM					STEEL		
		Groove Width G	Screw Size E	Hole Space D	Hole to Front J	Width Inch C	Length Inch B	Hght Inch A	No. of Holes	FLAT END Part Number	Price Set Of 3	FLAT END Part Number	Price Set Of 3
K1-18-30	12	0.709 (18mm)	14mm	1.181 (30mm)	2.375	1.500	4.500	2.000	2	HO-10200AF	\$55.32	HO-10200F	\$58.96
KITAGAWA B-12, BT-12, HO-12, HOB-12, HOH-12								3.000	2	HO-10300AF	\$67.88	HO-10300F	\$72.06
								4.000	2	HO-10400AF	\$79.62	HO-10400F	\$84.26
								2.000	2	KT-12200AF	\$66.48	KT-12200F	\$60.47
SAMCHULLY HAH12, HCH12								2.000	2	KT-12200BF	\$96.53	-	-
								2.500	2	KT-12250AF	\$70.74	KT-12250F	\$75.33
					3.000	2	KT-12300AF	\$80.88	KT-12300F	\$90.67			
					3.000	2	KT-12300BF	\$116.67	-	-			
					4.000	2	KT-12400AF	\$93.74	KT-12400F	\$88.68			
					4.000	2	KT-12400BF	\$134.69	-	-			
MMK H-12, HA8-12, ZA8-12, ZJA8-12					2.000	2	KT-12201AF	\$70.74	KT-12201F	\$75.18			
					3.000	2	KT-12301AF	\$85.48	KT-12301F	\$89.92			
					4.000	2	KT-12401AF	\$98.42	KT-12401F	\$103.01			
					HOWA HO15M12, HO22M10, HO24M10, HO27M10	2.500	-	-	-	KT-12	\$62.64		
						3.250	-	-	-	KT-12MH	\$77.76		
						4.000	-	-	-	KT-12EH	\$83.16		
2.500						-	-	-	KT-12PL	\$72.00			
HURON EQUIVALENT					3.250	-	-	-	KT-12MHPL	\$111.28			
	4.000	-	-	-	KT-12EHPL	\$111.00							
	2.000	5.500	2.000	2	MT-12200AF	\$66.48	MT-12200F	\$70.39					
	2.000	5.500	3.000	2	MT-12300AF	\$77.16	MT-12300F	\$84.90					
K1-18-32	12	0.710 (18mm)	14mm	1.260 (32mm)	3.125	2.000	5.500	2.000	2	MT-12400AF	\$93.73	MT-12400F	\$98.25
								2.000	2	KT-12204AF	\$66.48	KT-12204F	\$70.41
K1-18-38	12	0.709 (18mm)	14mm	1.488 (38mm)	3.125	2.000	5.500	2.000	2	KT-12404AF	\$93.74	KT-12404F	\$98.25
								4.000	2	KT-12404AF	\$93.74	KT-12404F	\$98.25

For "Pointed" Soft Jaws, please substitute "P" for "F" in the part number. Example: KT-10200AF will be KT-10200AP. Add \$3.25 For Pointed Jaws

Soft Jaw Material: ALUMINUM-6061-T6 Bar Stock, STEEL-1018 or 1050, "B" JAWS-7075-T6 Aircraft Aluminum

For complete list of applicable chucks, see pages 632-644. * denotes non-stock item-Please allow 1 week manufacturing time.

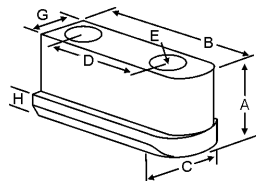
HARD JAWS

Group Number	Chuck Size	Critical Dimensions										Part Number	Price Per Set	Style	Code	
		Groove Width G	Screw Size E	Hole Space D	Width Inch C	OAL Inch B	Height Inch A	No. of Holes	No. of Steps	Top Step Ht S1	Mid Step Ht S2					Bot Step Ht S3
K1-18-30	12	0.709 (18mm)	14mm	1.181 (30mm)	1.750	4.600	2.000	3	1	0.750	-	1.250	KT-120HJ1	\$476.28	Shark Jaws	D
B-12, BT-12, HA8-12, MMK-12, ZA8-12					1.969	4.091	2.051	3	1	0.669	-	1.382	KT-120HJ1-U	\$384.75	OEM Style	E
					2.000	4.875	2.469	3	1	1.300	-	1.168	KT-120HJ1-X	\$405.00	XTRA-BITE	E
					1.750	4.600	2.500	3	2	0.650	0.500	1.350	KT-120HJ2	\$476.28	Shark Jaws	D
					2.000	4.042	2.480	3	2	0.543	0.442	1.495	KT-120HJ2-U	\$384.75	OEM Style	E
					2.000	4.875	2.469	3	2	0.650	0.650	1.169	KT-120HJ2-X	\$405.00	XTRA-BITE	E

JAW NUTS & SCREWS



MADE IN THE USA



USST

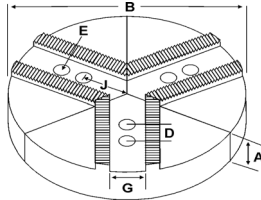
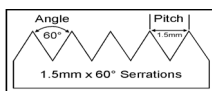
Kitagawa	Chuck Size	Critical Dimensions							2 Screws Included With Each Jaw Nut			
		Heel Height H	Groove Width G	Screw Size Pitch & Length E	Hole Space D	Hght Inch A	Width Inch C	Length Inch B	Jaw Nut Part Number	Price Each	Screw Part Number	Price Each
Kitagawa:B-12,HOB-12 MMK:HH-12,HHL-12	12	0.531	0.708 (18mm)	M14-2.00 x 45mm	1.181 (30mm)	1.318	1.040	2.185	KT-120JN	\$33.32	M1420045	\$2.00
1.488 (38mm)					1.318	1.040	2.185	KT-124JN	\$33.39	M1420045	\$2.00	

Call Us Or Visit Our Website For Our Complete Selection!

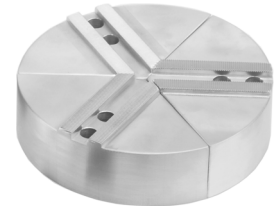
LATHES CHUCKS
LIVE CENTERS
VISE ACCESSORIES
VISE JAWS
STRAIGHT SHANK COLLET HOLDERS
LATHES BUSHINGS
DRILL CHUCKS
CARBIDE INSERTS
THREADING/GROOVING
CUTTING TOOLS
MACHINERY
PRECISION TOOLS
DEBURRING
COOLANT/FLUIDS
TOOL STORAGE

ROUND JAWS- 1.5 mm x 60° Serrations

FOR USE ON: **Kitagawa, Samchully, Strong, MMK, SMW Autoblok, Howa & Hitachi-Seiki Chucks**



- Round Jaws allow for complete gripping of workpiece
- Oversized jaws available
- Ideal for thin-walled or irregular shaped workpieces.
- Can be machined to fit workpiece
- Max. length of serrations: 5.75"
- All jaws have 2 holes
- Special "J" dimensions available
- Available in Aluminum, Cast Iron & Steel
- **Made in the USA**



Group

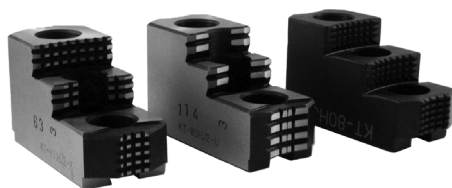
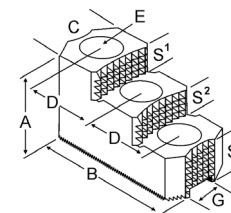


Group No.	Chuck Size	Critical Dimensions				Hole to Front J	Pie Dia B	Height Inch A	Industry Ref #	ALUMINUM		CAST IRON	
		Groove Width G	Screw Size E	Hole Space D	Part Number					Price Set of 3	Part Number	Price Set of 3	
K1-20-35	12	0.788 (20mm)	12mm	1.377 (35mm)	2.875	10	2.00	-	10-RSG-12200A	\$147.37	-	-	
12						4.00	-	10-RSG-12400A*	\$227.31	-	-		
3.438					12	2.00	SUG12PSTM	RSG-12200A4	\$191.51	RSG-12200CI	\$281.59		
					12	3.00	-	RSG-12300A	\$315.85	-	-		
2.875					12	4.00	-	RSG-12400A	\$380.07	-	-		
					12	4.00	SUG12P1STM	RSG-12400A4	\$367.20	-	-		
K1-21-30	12	0.827 (21mm)	16mm	1.181 (30mm)	2.875	10	2.00	-	10-RKT-12208A	\$147.37	-	-	
3.000					10	2.00	AUTO10P	10-RKT-12208A4	\$147.37	-	-		
2.875					12	2.00	-	RKT-12208A	\$191.51	RKT-12208CI	\$281.59		
					12	2.00	-	-	-	RKT-12208S	\$428.57		
3.500†					12	2.00	KTTB212P	RKT-12208A4	\$191.51	-	-		
4.000†					12	2.50	AKT212FG	RKT-12258A5	\$175.39	-	-		
2.875					12	3.00	-	RKT-12308A	\$267.26	-	-		
					12	4.00	-	RKT-12408A	\$293.76	-	-		
3.500†					12	4.00	KTTB212P1	RKT-12408A4	\$293.76	-	-		
4.000†					12	4.00	AKT212MHFG	RKT-12408A5	\$331.00	-	-		
2.875					12	5.00	-	RKT-12508A	\$423.80	-	-		
4.000†					12	5.00	AKT212EHFG	RKT-12508A5	\$423.80	-	-		
2.875					12	6.00	-	RKT-12608A	\$627.98	-	-		
					15	2.00	-	15-RKT-12208A	\$305.66	-	-		
15					2.50	-	15-RKT-12258A	\$439.39	15-RKT-12258CI	\$492.78			
					3.500†	15	3.00	KTT15B212P	15-RKT-12308A4	\$459.00	-	-	
2.875					15	4.00	-	15-RKT-12408A	\$539.82	-	-		
3.500†					15	4.00	KTT15B212P1	15-RKT-12408A4	\$520.54	-	-		
2.875					18	2.50	-	18-RKT-12258A	\$539.50	-	-		
3.500†					18	3.00	KTT18B212P	18-RKT-12308A4	\$599.40	-	-		
2.875					18	4.00	-	18-RKT-12408A*	\$728.78	-	-		
3.500†					18	4.00	KTT18B212P1	18-RKT-12408A4	\$728.78	-	-		
					21	2.00	KTT21B212P2	21-RKT-12208A4	\$599.40	-	-		
2.875					21	4.00	-	21-RKT-12408A	\$971.86	-	-		
3.500†	24	2.00	KTT24B212P2	24-RKT-12208A4	\$858.60	-	-						
K1-21-35	12	0.827 (21mm)	16mm	1.378 (35mm)	2.875	12	2.00	-	RHO-12200A	\$191.51	RHO-12200CI	\$281.59	
18						4.00	-	RHO-12400A	\$380.07	-	-		
18					2.50	-	15-RHO-12250A	\$439.39	-	-			
					2.50	-	18-RHO-12250A*	\$539.50	-	-			

Round Jaw Material: ALUMINUM-6061-T6 Bar Stock, CAST IRON-Gray, STEEL-1018. 18" & Larger- Aluminum Casting T6
For complete list of applicable chucks, see pages 632-644* denotes non-stock item. Please allow 1 week manufacturing time.

HARD JAWS

- Designed for first operation roughing, expect standard runoff between 0.005-0.010
- Reversible-suitable for OD & ID workholding.
- **XTRA BITE** - very aggressive bite. Has conical teeth for extra gripping power and ground body to provide improved runoff.
- **GRIP-RITE** - OEM Style hard jaws have ground tips and provide better runoff.
- **SHARK JAWS** have conical teeth for extra gripping power and black oxide for long life. Ideal for castings and scaly material. Made in the USA.
- 1 & 2 step jaws available.



Group Number	Chuck Size	Critical Dimensions				Width Inch C	OAL Inch B	Height Inch A	No. of Holes	No. of Steps	Top Step Ht S1	Mid Step Ht S2	Bot Step Ht S3	Part Number	Price Per Set	Style	Code
		Groove Width G	Screw Size E	Hole Space D													
K1-21-30	12	0.827 (21mm)	16mm	1.181 (30mm)	2.000	4.042	2.480	3	1	0.543	-	1.937	KT-128HJ1-U	\$405.93	OEM Style	E	
1.750					4.600	2.500	3	2	0.650	0.500	1.350	KT-128HJ2	\$476.28	Shark Jaws	D		
2.000					4.042	2.480	3	2	0.543	0.442	1.495	KT-128HJ2-U	\$384.75	OEM Style	E		
2.000					4.875	2.469	3	2	0.650	0.650	1.169	KT-128HJ2-X	\$405.00	XTRA-BITE	E		

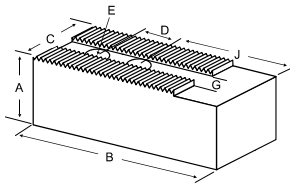
Call Us Today For All Of Your Machine Tool Needs!

2010-11 Master Catalog

SOFT JAWS- 1.5 mm x 60° Serrations

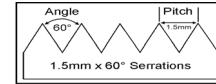
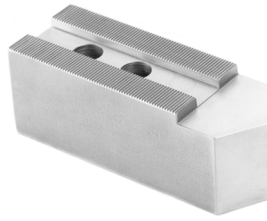
C

FOR USE ON: **Kitagawa, Samchully, Strong, MMK, SMW Autoblok, Howa & Hitachi-Seiki Chucks**



• Max. length of serrations: 5.75"

- Supplies maximum concentricity on finish turning operations
- Can be bored or turned to fit workpiece
- Steel jaws can be hardened
- Available flat ended or pointed for smaller diameter parts
- Special orders available
- Available in Aluminum, Steel & Aircraft Aluminum (where noted)



QUANTITY DISCOUNTS!
Order **5 SETS OR MORE** of the same part number soft jaw and receive a **5% DISCOUNT!**

Group
K1

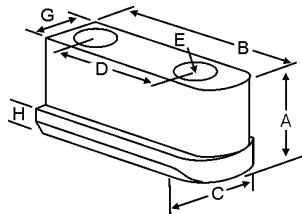
Group No.	Chuck Size	Critical Dimensions			Hole to Front J	Width Inch C	Length Inch B	Hght Inch A	No. of Holes	ALUMINUM		STEEL							
		Groove Width G	Screw Size E	Hole Space D						FLAT END Part Number	Price Set of 3	FLAT END Part Number	Price Set of 3						
K1-20-35	12	0.788 (20mm)	12mm	1.378 (35mm)	3.125	2.000	5.500	2.000	2	SG-12200AF	\$66.48	SG-12200F	\$70.41						
													4.000	2	SG-12400AF	\$93.74	SG-12400F	\$98.25	
K1-21-30	12	0.827 (21mm)	16mm	1.181 (30mm)	3.125	2.000	5.500	2.000	2	KT-12208AF	\$66.48	KT-12208F	\$60.47						
													2.000	2	KT-12208BF	\$96.53	-	-	
KITAGAWA B-212,BB-212, BL-212,BT-212													2.500	2	KT-12258AF	\$70.74	KT-12258F	\$75.33	
													3.000	2	KT-12308AF	\$80.88	KT-12308F	\$90.67	
SAMCHULLY HS12, HST12													3.000	2	KT-12308BF	\$116.67	-	-	
													4.000	2	KT-12408AF	\$82.62	KT-12408F	\$89.70	
STRONG N212													4.000	2	KT-12408BF	\$134.69	-	-	
HOWA H3KT12													6.000	2	KT-12608AF	\$253.85	KT-12608F	\$270.26	
SMW Autoblok													2.500	-	-	-	KT-212	\$62.64	-
BBM-305/315, BHM-305/315													3.250	-	-	-	KT-212MH	\$77.76	-
													4.000	-	-	-	KT-212EH	\$83.16	-
													6.000	-	-	-	KT-212PL	\$72.00	-
						4.000	-	-	-	KT-212EHPL	\$111.00	-							
K1-21-35	12	0.827 (21mm)	16mm	1.378 (35mm)	3.125	2.000	5.500	2.000	2	HO-12200AF	\$66.48	HO-12200F	\$70.41						
													2.500	2	HO-12250AF	\$77.44	HO-12250F	\$81.87	
													3.000	2	HO-12300AF	\$74.75	HO-12300F	\$81.09	
													4.000	2	HO-12400AF	\$93.74	HO-12400F	\$98.25	
													5.500	-	-	-	HO-27M12	\$86.00	-
					HURON EQUIV.	2.000	6.000	2.500	-	-	-	HO-27M12PL	\$95.00	-					
K1-21-40	12	0.826	16mm	1.562	3.000	2.000	5.750	2.500	2	JP-15250AF	\$78.17	JP-15250F	\$83.57						
								4.000	2	JP-15400AF	\$93.73	JP-15400F	\$98.25						
K1-21-40	10	0.827 (21mm)	3/4	1.578 (40mm)	2.040	1-3/4	4.813	2.500	2	HH-10250AF*	\$62.34	HH-10250F*	\$66.31						
													3.500	2	HH-10350AF*	\$87.25	HH-10350F*	\$72.93	
10" Howa Hollow													5.000	2	HH-10500AF*	\$124.66	HH-10500F*	\$83.93	

For "Pointed" Soft Jaws, please substitute "P" for "F" in the part number. Example: KT-12200AF will be KT-12200AP. Pointed Jaws add \$6.50
Soft Jaw Material: ALUMINUM-6061-T6 Bar Stock, STEEL-1018, "B" JAWS-7075-T6 Aircraft Aluminum
For complete list of applicable chucks, see pages 632-644 * denotes non-stock item. Please allow 1 week manufacturing time.

JAW NUTS & SCREWS



MADE IN THE
USA

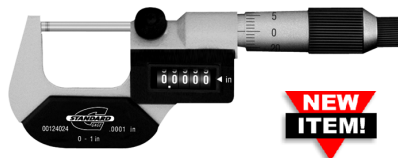


USST

Chuck Make & Model	Chuck Size	Critical Dimensions							2 Screws Included With Each Jaw Nut			
		Heel Height H	Groove Width G	Screw Size Pitch & Length E	Hole Space D	Hght Inch A	Width Inch C	Length Inch B	Jaw Nut Part Number	Price Each	Screw Part Number	Price Each
-	12	0.531	0.787 (20mm)	M12-1.75x45mm	1.375 (35mm)	1.320	1.040	2.190	SG-120JN	\$35.56	M1217545	\$2.00
B212, HS12, N212		0.453	0.827 (21mm)	M16-2.00x40mm	1.181 (30mm)	1.090	1.160	2.565	KT-128JN	\$34.07	M1620040	\$2.00
-		0.453	0.827 (21mm)	M16-2.00x40mm	1.378 (35mm)	1.140	1.060	2.429	HO-120JN	\$33.39	M1620040	\$2.00

DIGITAL OUTSIDE MICROMETERS

- High resolution mechanical digit counter for quick and error-free reading
- Carbide-tipped measuring faces with .25" diameter
- Counter resolution to .0001"
- Micrometer head resolution to .0001"
- Sizes over 1" include a setting standard
- Ratchet friction thimble and locking nut
- Includes plastic case and inspection report



NEW ITEM!

STANDARD GAGE

Range	Accuracy	Setting Standards	Part Number	Price Each
0-1"	.00016"	-	BS-46617	\$82.65
1-2"	.00016"	1"	BS-46618	\$85.50
2-3"	.00020"	2"	BS-46619	\$98.80
3-4"	.00020"	3"	BS-46620	\$108.30

Call Us Or Visit Our Website For Our Complete Selection!

2010-11 Master Catalog

29

LATHE CHUCKS
LIVE CENTERS

VISE JAWS
VISE ACCESSORIES

STRAIGHT SHANK
COLLET HOLDERS

LATHE BUSHINGS
DRILL CHUCKS

CARBIDE INSERTS
THREADING/GROOVING

CUTTING TOOLS
MACHINERY

PRECISION TOOLS
DEBURRING

COOLANT/FLUIDS
TOOL STORAGE