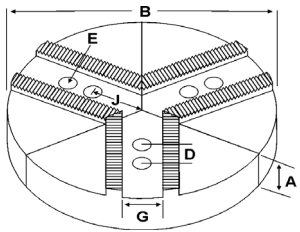
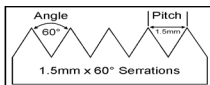
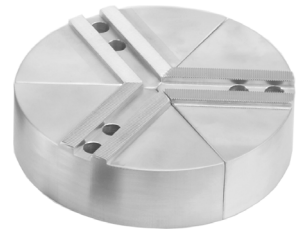


ROUND JAWS- 1.5 mm x 60° Serrations

FOR USE ON: **Kitagawa, Samchully, Strong, MMK, SMW Autoblok, Howa & Hitachi-Seiki Chucks**



- Round Jaws allow for complete gripping of workpiece
- Oversized jaws available
- Ideal for thin-walled or irregular shaped workpieces.
- Can be machined to fit workpiece
- Max. length of serrations: 5.75"
- All jaws have 2 holes
- Special "J" dimensions available
- Available in Aluminum & Cast Iron
- **Made in the USA**



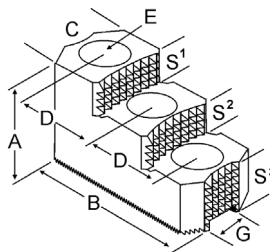
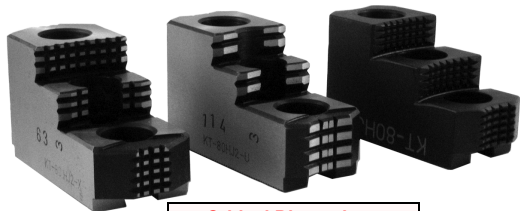
Group



Group No.	Chuck Size	Critical Dimensions				Hole to Front J	Pie Dia B	Height Inch A	Industry Ref #	ALUMINUM		CAST IRON/STEEL		
		Groove Width G	Screw Size E	Hole Space D						Part Number	Price Set of 3	Part Number	Price Set of 3	
K1-22-43	15 & UP	0.866 (22mm)	20mm	1.690 (43mm)	3.750	12	4.00	-	12-RKT-15400A*	\$331.00	-	-		
KITAGAWA BT-15, B-15,B-18 HOB-15, HOB-18, HOH-15, HOH-18						15	2.50	-	RKT-15250A	\$439.39	RKT-15250CI	\$492.78		
							2.50	-	-	-	RKT-15250S	\$730.16		
							4.00	-	RKT-15400A	\$539.82	RKT-12400S	\$1,183.26		
							5.00	-	RKT-15500A	\$843.82	-	-		
							6.00	-	RKT-15600A*	\$933.55	RKT-15600S	\$1,688.31		
SAMCHULLY HAH/HCH 15 HAH/HCH 18						18	2.50	-	18-RKT-15250A	\$539.50	-	-		
							4.00	-	18-RKT-15400A	\$728.78	-	-		
							2.50	-	21-RKT-15250A	\$777.03	-	-		
							4.00	-	21-RKT-15400A*	\$971.86	-	-		
						21	2.50	-	24-RKT-15250A*	\$936.90	-	-		
							4.00	-	24-RKT-15400A	\$1,352.54	-	-		
							3.750	15	2.50	-	RKT-15252A	\$439.39	RKT-15252CI	\$492.78
							3.188	15	3.00	KTT15P-2.36	RKT-15302A2	\$459.00	-	-
K1-22-60	15 & UP	0.866 (22mm)	20mm	2.360 (60mm)	3.750	15	4.00	-	RKT-15402A	\$539.82	-	-		
						18	2.50	-	18-RKT-15252A	\$539.50	-	-		
						4.00	-	18-RKT-15402A	\$728.78	-	-			
						21	4.00	-	21-RKT-15402A	\$971.86	-	-		
						24	4.00	-	24-RKT-15402A	\$1,352.54	-	-		
K1-26-43	15 & UP	1.005 (25.5mm) (some mfg's refer to this as 1.004)	20mm	1.690 (43mm)	3.750	12	3.00	-	12-RKT-15301A	\$315.85	-	-		
						15	2.50	-	RKT-15251A	\$439.39	RKT-15251CI	\$492.78		
							2.50	-	-	-	RKT-15251S	\$730.16		
							4.00	-	RKT-15401A	\$539.82	RKT-15401S	\$1,183.26		
						KITAGAWA B-215, N15, N18	15	2.00	KTTB215P2	RKT-15201A4	\$351.00	-	-	
								3.00	KTTB215P	RKT-15301A4	\$459.00	-	-	
								4.00	KTTB215P1	RKT-15401A4	\$520.54	-	-	
								15	5.00	-	RKT-15501A	\$843.82	-	-
						STRONG N215	18	2.50	-	18-RKT-15251A	\$539.50	-	-	
								4.00	-	18-RKT-15401A	\$728.78	-	-	
								3.00	KTT18B215P	18-RKT-15301A4	\$599.40	-	-	
								4.00	KTT18B215P1	18-RKT-15401A4	\$728.78	-	-	
								21	3.00	KTT21B215P	21-RKT-15301A4	\$754.92	-	-
								21	4.00	-	21-RKT-15401A	\$971.86	-	-
	21	2.50	-	24-RKT-15251A	\$936.90	-	-							
		4.00	-	24-RKT-15401A	\$1,352.54	-	-							

Round Jaw Material: ALUMINUM-6061-T6 Bar Stock, CAST IRON-Gray, STEEL-1018, 18" & Larger- Alum A319 6061-T6
For complete list of applicable chucks, see pages 632-644. * denotes non-stock item. Please allow 1 week manufacturing time.

HARD JAWS- 2 STEP



- Designed for first operation roughing, expect standard runout between 0.005-0.010
- Reversible-suitable for OD & ID workholding.
- XTRA BITE -very aggressive bite. Has conical teeth for extra gripping power and ground body to provide improved runout.
- GRIP-RITE-OEM Style hard jaws have ground tips and provide better runout.
- SHARK JAWS have conical teeth for extra gripping power and black oxide for long life. Ideal for castings and scaly material. Made in the USA.
- 1 & 2 step jaws available.

Group Number	Chuck Size	Critical Dimensions				Width C	OAL B	Height A	No. of Holes	No. of Steps	TopStep Ht S1	MidStep Ht S2	Bot Step Ht S3	Part Number	Price Per Set	Style	Code
		Groove Width G	Screw Size E	Hole Space D													
K1-22-43	15 & 18	0.866 (22mm)	20mm	1.693 (43mm)	2.500	5.400	3.000	3	2	0.730	0.730	1.540	KT-150HJ2	\$617.39	Shark Jaws	D	
B-15, B-18, BT-15					2.448	5.850	3.385	3	2	0.827	0.827	1.731	KT-150HJ2-U	\$498.75	OEM Style	E	
					2.500	5.500	3.500	3	2	0.950	0.950	1.600	KT-150HJ2-X	\$525.00	XTRA-BITE	E	
K1-26-43	15 & 18	1.005 (25.5mm)	20mm	1.690 (43mm)	2.500	5.400	3.000	3	2	0.730	0.730	1.540	KT-151HJ2	\$617.39	Shark Jaws	D	
B-215 N18, N15					2.448	5.850	3.385	3	2	0.827	0.827	1.731	KT-151HJ2-U	\$498.75	OEM Style	E	
					2.500	5.500	3.500	3	2	0.950	0.950	1.600	KT-151HJ2-X	\$525.00	XTRA-BITE	E	

Call Us Today For All Of Your Machine Tool Needs!

CHUCK JAWS
LATHE WORKHOLDING

MACHINE VISES
MAGNETIC CHUCKS

RETENTION KNOBS
ER, DA, TG COLLETS

TOOLHOLDERS
TAP HOLDERS

INDEXABLE DRILLS
TURNING & BORING

ENDMILLS, DRILLS
TAPS & REAMERS

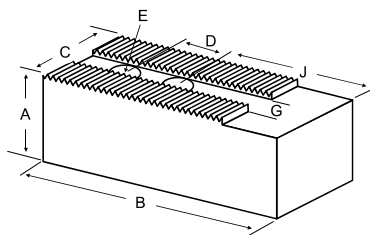
ABRASIVES
MEASURING TOOLS

MRO & SAFETY
FLAT STOCK/DRILL ROD

SOFT JAWS- 1.5 mm x 60° Serrations

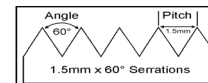
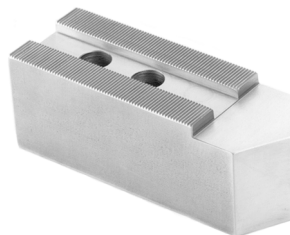
C

FOR USE ON: **Kitagawa, Samchully, Strong, MMK, SMW Autoblok, Howa & Hitachi-Seiki Chucks**



• Max. length of serrations: 5.75"

- Supplies maximum concentricity on finish turning operations
- Can be bored or turned to fit workpiece
- Steel jaws can be hardened
- Available flat ended or pointed for smaller diameter parts
- Special orders available
- Available in Aluminum, Steel & Aircraft Aluminum (where noted)



Group

K1

QUANTITY DISCOUNTS!

Order **5 SETS OR MORE** of the same part number soft jaw and receive a **5% DISCOUNT!**

LATHES CHUCKS
LIVE CENTERS
VISE ACCESSORIES
VISE JAWS
STRAIGHT SHANK COLLET HOLDERS
LATHE BUSHINGS
DRILL CHUCKS
CARBIDE INSERTS
THREADING/GROOVING
CUTTING TOOLS
MACHINERY
PRECISION TOOLS
DEBURRING
COOLANT/FLUIDS
TOOL STORAGE

Group No.	Chuck Size	Critical Dimensions			Hole to Front J	Width Inch C	Length Inch B	Hght Inch A	No. of Holes	ALUMINUM		STEEL	
		Groove Width G	Screw Size E	Hole Space D						FLAT END Part Number	Price Set Of 3	FLAT END Part Number	Price Set Of 3
K1-21-45	14 or 16	0.827 (21mm)	16mm	1.771 (45mm)	2.980	2.000	6.250	2.500	2	NK-14250AF*	\$66.40	NK-14250F*	\$66.10
								3.500	2	NK-14350AF*	\$92.98	NK-14350F*	\$79.88
					3.980	2.000	7.250	2.500	2	NK-14257AF*	\$77.04	NK-14257F*	\$75.52
								3.500	2	NK-14357AF*	\$107.78	NK-14357F*	\$91.26
K1-22-43	15 & Up	0.866 (22mm)	20mm	1.690 (43mm)	3.437	2.500	6.500	2.500	2	KT-15250AF	\$101.03	KT-15250F	\$105.98
								2.500	2	KT-15250BF	\$144.90	-	-
								3.000	2	KT-15300AF	\$110.18	KT-15300F	\$119.53
					4.437	2.500	7.500	4.000	2	KT-15400AF	\$132.99	KT-15400F	\$139.19
								5.000	2	KT-15500AF	\$216.57	KT-15500F	\$175.63
								6.000	2	KT-15600AF	\$285.43	KT-15600F	\$302.05
K1-22-60	15 & Up	0.866 (22mm)	20mm	2.360 (60mm)	2.750	2.500	6.500	2.500	2	KT-15255AF	\$108.89	KT-15255F	\$114.48
								4.000	2	KT-15405AF	\$144.62	KT-15405F	\$151.04
								2.500	2	KT-15252AF	\$101.03	KT-15252F	\$102.97
					3.750	2.500	7.500	3.000	2	KT-15302AF	\$116.69	KT-15302F	\$122.81
								4.000	2	KT-15402AF	\$132.99	KT-15402F	\$139.19
								6.000	2	KT-15602AF	\$285.43	KT-15602F	\$302.05
K1-26-38	16	1.003 (25.5mm)	20mm	1.496 (38mm)	2.940	2-1/2	5.500	2.500	2	AB-16250AF*	\$85.50	AB-16250F*	\$89.67
								3.500	2	AB-16350AF*	\$119.71	AB-16350F*	\$125.55
								5.000	2	AB-16500AF*	\$170.99	AB-16500F*	\$148.61
					3.940	2-1/2	6.500	2.500	2	AB-16257AF*	\$101.03	AB-16257F*	\$105.98
								3.500	2	AB-16357AF*	\$141.45	AB-16357F*	\$148.38
								5.000	2	AB-16507AF*	\$202.08	AB-16507F*	\$175.63
K1-26-43	15 & Up	1.005 (25.5mm) (some mfg's refer to this as 1.004)	20mm	1.690 (43mm)	3.437	2.500	6.500	2.500	2	KT-15251AF	\$101.03	KT-15251F	\$106.44
								2.500	2	KT-15251BF	\$144.90	-	-
								3.000	2	KT-15301AF	\$123.70	KT-15301F	\$130.41
								4.000	2	KT-15401AF	\$132.99	KT-15401F	\$139.19
					4.437	2.500	7.500	5.000	2	KT-15501AF	\$216.57	KT-15501F	\$168.06
								6.000	2	KT-15601AF	\$285.43	KT-15601F	\$302.05
								2.500	2	KT-15256AF	\$108.89	KT-15256F	\$114.48
								4.000	2	KT-15406AF	\$144.62	KT-15406F	\$151.04

For "Pointed" Soft Jaws, please substitute "P" for "F" in the part number. Example: NK-14250AF will be NK-14250AP. Pointed Jaws add \$6.50.

Soft Jaw Material: ALUMINUM-6061-T6 Bar Stock, STEEL-1018, "B" JAWS-7075-T6 Aircraft Aluminum

For complete list of applicable chucks, see pages 632-644 * denotes non-stock item. Please allow 1 week manufacturing time.

JAW NUTS & SCREWS

Chuck Make & Model	Chuck Size	Critical Dimensions						2 Screws Included With Each Jaw Nut				
		Heel Height H	Groove Width G	Screw Size Pitch & Length E	Hole Space D	Hght Inch A	Width Inch C	Length Inch B	Jaw Nut Part Number	Price Each	Screw Part Number	Price Each
-	15	0.649	0.864 (22mm)	M20-2.50x55mm	1.690 (43mm)	1.790	1.318	3.149	KT-150JN	\$46.94	M2025055	\$3.00
-	15	0.649	0.864 (22mm)	M20-2.50x55mm	2.360 (60mm)	1.798	1.320	3.820	KT-152JN	\$46.12	M2025055	\$3.00
Kitagawa: B-215	15	0.758	1.003 (25.5mm)	M20-2.50x50mm	1.690 (43mm)	1.550	1.375	3.149	KT-151JN	\$46.94	M2025050	\$3.00
Kitagawa: B-15, BT-15, B-18, HOB-15	15	0.636	0.861	M20-2.50x50mm	1.690 (43mm)	1.779	1.317	3.149	KT-153JN	\$45.34	M2025050	\$3.00
-	15/18	0.730	1.003 (25.5mm)	M20-2.50x50mm	T-Nut	1.540	1.378	1.654	KT-180JN	\$46.94	M2025050	\$3.00
UVE-800LB	24	0.414	0.985	M20-2.50x50mm	3.152	1.241	1.418	4.728	KT-241JN	\$64.28	M2025050	\$3.00
HJ-24, HJA11-24	24	0.748	0.985	M20-2.50x50mm	3.152	2.127	1.576	4.728	KT-242JN	\$64.28	M2025050	\$3.00

Call Us Or Visit Our Website For Our Complete Selection!