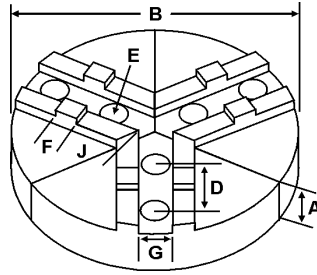
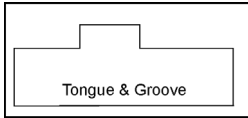
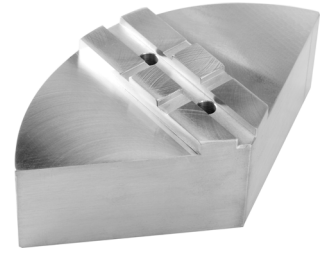


# ROUND JAWS- AMERICAN STANDARD TONGUE & GROOVE

FOR USE ON: **Buck, Bison, BTC, Cushman, Huron, PBA, SCA, Yuasa, Rohm Chucks**



- American Standard Tongue & Groove
- Round Jaws allow for complete gripping of workpiece
- Oversized jaws available
- Ideal for thin-walled or irregular shaped workpieces.
- Can be machined to fit workpiece
- All jaws have 2 holes
- Special "J" dimensions available
- Available in Aluminum & Cast Iron
- Made in the USA



Group

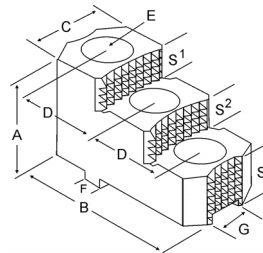
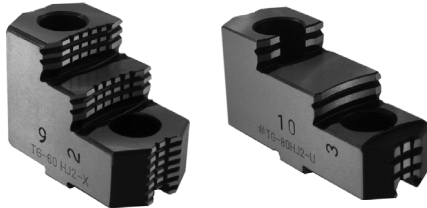


**OFF-CENTER TONGUE**

|              |             | Critical Dimensions |                |                |              |              |                   |               |               |               | ALUMINUM       |               | CAST IRON      |             |            |                |            |          |             |
|--------------|-------------|---------------------|----------------|----------------|--------------|--------------|-------------------|---------------|---------------|---------------|----------------|---------------|----------------|-------------|------------|----------------|------------|----------|-------------|
| Group No.    | Chuck Size  | Type                | Groove Width G | Tongue Width F | Screw Size E | Hole Space D | Tongue to Front J | Pie Dia B     | Hght Inch A   | Part Number   | Price Set Of 3 | Part Number   | Price Set Of 3 |             |            |                |            |          |             |
| TI-50-5/8-30 | 15          | MEDIUM DUTY         | 0.500          | 0.750          | 5/8          | 3.000        | 3.370             | 12            | 2.00          | 12-RTG-15200A | \$191.51       | -             | -              |             |            |                |            |          |             |
|              |             |                     |                |                |              |              |                   |               | 4.00          | 12-RTG-15400A | \$380.07       | -             | -              |             |            |                |            |          |             |
|              |             |                     |                |                |              |              |                   |               | 3.785         | 15            | 2.50           | RTG-15250A    | \$439.39       | RTG-15250CI | \$492.78   |                |            |          |             |
|              |             |                     |                |                |              |              |                   |               |               |               | 4.00           | RTG-15400A    | \$539.82       | RTG-15400S  | \$1,183.26 |                |            |          |             |
|              |             |                     |                |                |              |              |                   |               |               |               | 5.00           | RTG-15500A*   | \$843.82       | -           | -          |                |            |          |             |
|              |             |                     |                |                |              |              |                   |               | 4.100         | 18            | 2.50           | 18-RTG-15250A | \$539.83       | -           | -          |                |            |          |             |
|              |             |                     |                |                |              |              | 4.00              | 18-RTG-15400A |               |               | \$728.78       | -             | -              |             |            |                |            |          |             |
|              |             |                     |                |                |              |              | 4.550             | 21            | 2.50          | 21-RTG-15250A | \$777.03       | -             | -              |             |            |                |            |          |             |
|              |             |                     |                |                |              |              |                   |               | 4.00          | 21-RTG-15400A | \$971.86       | -             | -              |             |            |                |            |          |             |
|              |             |                     |                |                |              |              | 3.825             | 24            | 2.50          | 24-RTG-15250A | \$936.90       | -             | -              |             |            |                |            |          |             |
|              |             |                     |                |                |              |              |                   |               | 4.00          | 24-RTG-15400A | \$1,352.54     | -             | -              |             |            |                |            |          |             |
|              |             |                     |                |                |              |              | TI-50-3/4-30      | 15            | HEAVY DUTY    | 0.500         | 0.750          | 3/4           | 3.000          | 3.785       | 15         | 2.50           | RTG-15255A | \$439.39 | RTG-15255CI |
| 4.00         | RTG-15405A  | \$539.82            | -              | -              |              |              |                   |               |               |               |                |               |                |             |            |                |            |          |             |
| 5.00         | RTG-15505A* | \$843.82            | -              | -              |              |              |                   |               |               |               |                |               |                |             |            |                |            |          |             |
| 4.100        | 18          | 2.50                | 18-RTG-15255A  | \$539.83       | -            | -            |                   |               |               |               |                |               |                |             |            |                |            |          |             |
|              |             | 4.00                | 18-RTG-15405A  | \$728.78       | -            | -            |                   |               |               |               |                |               |                |             |            |                |            |          |             |
| 4.550        | 21          | 2.50                | 21-RTG-15255A  | \$777.03       | -            | -            |                   |               |               |               |                |               |                |             |            |                |            |          |             |
|              |             | 4.00                | 21-RTG-15405A  | \$971.86       | -            | -            |                   |               |               |               |                |               |                |             |            |                |            |          |             |
| 3.785        | 24          | 2.50                | 24-RTG-15255A  | \$936.90       | -            | -            |                   |               |               |               |                |               |                |             |            |                |            |          |             |
|              |             | 4.00                | 24-RTG-15405A  | \$1,352.54     | -            | -            |                   |               |               |               |                |               |                |             |            |                |            |          |             |
| 18 & Up      | HEAVY DUTY  | 0.500               | 0.750          | 3/4            | 3.000        | 5.100        |                   |               |               |               |                |               |                | 12          | 3.00       | 12-RTG-18300A* | \$315.85   | -        | -           |
|              |             |                     |                |                |              |              |                   |               |               |               |                |               |                |             | 6.00       | 12-RTG-18600A* | \$558.39   | -        | -           |
|              |             |                     |                |                |              |              |                   |               |               |               |                |               |                |             | 18         | 2.50           | RTG-18250A | \$539.83 | -           |
|              |             |                     |                |                |              |              | 4.00              | RTG-18400A    | \$728.78      | -             | -              |               |                |             |            |                |            |          |             |
|              |             |                     |                |                |              |              | 21                | 2.50          | 21-RTG-18250A | \$777.03      | -              | -             |                |             |            |                |            |          |             |
|              |             |                     |                |                |              |              |                   | 4.00          | 21-RTG-18400A | \$971.86      | -              | -             |                |             |            |                |            |          |             |
| 24           | 2.50        | 24-RTG-18250A       | \$936.90       | -              | -            |              |                   |               |               |               |                |               |                |             |            |                |            |          |             |
|              | 4.00        | 24-RTG-18400A       | \$1,352.54     | -              | -            |              |                   |               |               |               |                |               |                |             |            |                |            |          |             |
| TI-50-7/8-30 | 18 & Up     | HEAVY DUTY          | 0.500          | 0.750          | 7/8          | 3.000        | 5.000             | 24            | 4.00          | RTG-24400A    | \$1,352.54     | -             | -              |             |            |                |            |          |             |

Round Jaw Material: ALUMINUM-6061-T6 Bar Stock, CAST IRON-Gray, STEEL-1018. 18" & Larger- Aluminum Casting T6  
For complete list of applicable chucks, see pages 632-644.\* denotes non-stock item. Please allow 1 week manufacturing time.

**HARD JAWS-2 STEP**



- FEATURES:**
- Designed for first operation roughing, expect standard runout between 0.005-0.010
  - Reversible-suitable for OD & ID workholding.
  - GRIP-RITE-OEM style hard jaws have ground tips and provide better runout.
  - XTRA BITE -very aggressive bite. Has conical teeth for extra gripping power and ground body to provide improved runout.

|              |            | Critical Dimensions |                |                |              |              |              |            |               |              |              |                |                |                |             |               |      |
|--------------|------------|---------------------|----------------|----------------|--------------|--------------|--------------|------------|---------------|--------------|--------------|----------------|----------------|----------------|-------------|---------------|------|
| Group        | Chuck Size | Type                | Groove Width G | Tongue Width F | Screw Size E | Hole Space D | Width Inch C | OAL Inch B | Height Inch A | No. of Holes | No. of Steps | Top Step Ht S1 | Mid Step Ht S2 | Bot Step Ht S3 | Part Number | Price Per Set | Code |
| TI-50-5/8-30 | 15 & UP    | MEDIUM DUTY         | 0.500          | 0.750          | 5/8          | 3.000        | 1.980        | 5.392      | 2.613         | 2            | 2            | 0.551          | 0.551          | 1.511          | TG-150HJ2-U | \$470.25      | E    |
|              |            |                     |                |                |              |              | 2.500        | 5.350      | 3.469         | 2            | 2            | 0.950          | 0.950          | 1.569          | TG-150HJ2-X | \$495.00      | E    |
| TI-50-3/4-30 | 15 & UP    | HEAVY DUTY          | 0.500          | 0.750          | 3/4          | 3.000        | 2.500        | 5.350      | 3.469         | 2            | 2            | 0.950          | 0.950          | 1.569          | TG-155HJ2-X | \$550.00      | E    |

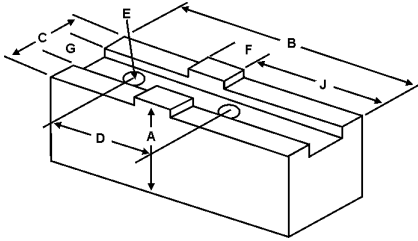
**Call Us Today For All Of Your Machine Tool Needs!**

**2010-11 Master Catalog**

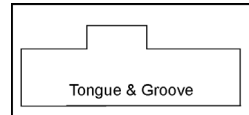
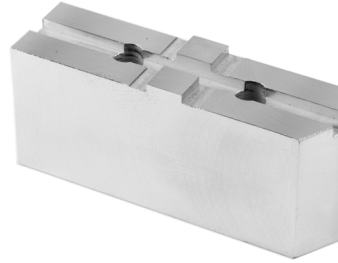
# SOFT JAWS- AMERICAN STANDARD TONGUE & GROOVE

C

FOR USE ON: **Buck, Bison, BTC, Cushman, Huron, PBA, Yuasa & Rohm Chucks**



- American Standard Tongue & Groove
- Supplies maximum concentricity on finish turning operations
- Can be bored or turned to fit workpiece
- Steel jaws can be hardened
- Available flat ended or pointed for smaller diameter parts
- Special orders available
- Available in Aluminum, Steel & Aircraft Aluminum (where noted)
- Made in the USA

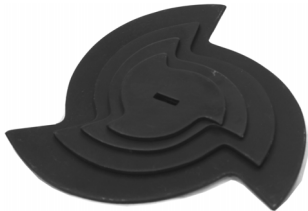


**QUANTITY DISCOUNTS!**  
Order **5 SETS OR MORE** of the same part number soft jaw and receive a **5% DISCOUNT!**

| Group No.    | Chuck Size | Type       | Critical Dimensions |                |              |              | Tongue to Front J | Tongue Position | Width Inch C | Length Inch B | Hght Inch A | ALUMINUM             |                | STEEL                |                |           |          |
|--------------|------------|------------|---------------------|----------------|--------------|--------------|-------------------|-----------------|--------------|---------------|-------------|----------------------|----------------|----------------------|----------------|-----------|----------|
|              |            |            | Groove Width G      | Tongue Width F | Screw Size E | Hole Space D |                   |                 |              |               |             | FLAT END Part Number | Price Set Of 3 | FLAT END Part Number | Price Set Of 3 |           |          |
| TI-50-5/8-30 | 15         | MED. DUTY  | 0.500               | 0.750          | 5/8          | 3.000        | 2.900             | Offset          | 1.750        | 5.750         | 1.50        | TG-15150AF           | \$87.29        | TG-15150F            | \$93.54        |           |          |
|              |            |            |                     |                |              |              |                   |                 |              |               | 2.00        | TG-15200AF           | \$61.83        | TG-15200F            | \$65.50        |           |          |
|              |            |            |                     |                |              |              |                   |                 |              |               | 2.50        | TG-15250AF           | \$71.23        | TG-15250F            | \$75.34        |           |          |
|              |            |            |                     |                |              |              |                   |                 |              |               | 3.00        | TG-15300AF           | \$83.68        | TG-15300F            | \$88.42        |           |          |
|              |            |            |                     |                |              |              |                   |                 |              |               | 4.00        | TG-15400AF           | \$93.45        | TG-15400F            | \$98.25        |           |          |
|              |            |            |                     |                |              |              |                   |                 |              |               | 2.000       | TG-15252AF           | \$85.27        | TG-15252F            | \$90.06        |           |          |
|              |            |            |                     |                |              |              |                   |                 |              |               | 3.350       | TG-15402AF           | \$116.80       | TG-15402F            | \$122.81       |           |          |
|              |            |            |                     |                |              |              |                   |                 |              |               | 0.750       | 5/8                  | 3.000          | Centered             | Centered       | 2.500     | 5.188    |
| TI-50-3/4-30 | 15         | 15" W & S  | 0.500               | 0.750          | 3/4          | 3.000        | 3.000             | Offset          | 2.000        | 5.75          | 3.50        | TG-15359AF*          | \$101.21       | TG-15359F*           | \$106.66       |           |          |
|              |            |            |                     |                |              |              |                   |                 |              |               | 5.00        | TG-15509AF*          | \$144.58       | TG-15509F*           | \$152.37       |           |          |
| TI-50-3/4-30 | 15         | HEAVY DUTY | 0.500               | 0.750          | 3/4          | 3.000        | 2.900             | Offset          | 1.750        | 5.750         | 2.50        | TG-15255AF           | \$74.26        | TG-15255F            | \$78.59        |           |          |
|              |            |            |                     |                |              |              |                   |                 |              |               | 3.00        | TG-15305AF           | \$77.63        | TG-15305F            | \$84.22        |           |          |
|              |            |            |                     |                |              |              |                   |                 |              |               | 4.00        | TG-15405AF           | \$96.47        | TG-15405F            | \$101.52       |           |          |
|              |            |            |                     |                |              |              |                   |                 |              |               | 2.50        | TG-15256AF           | \$85.70        | TG-15256F            | \$90.06        |           |          |
| TI-50-3/4-30 | 18         |            | 0.500               | 0.750          | 3/4          | 3.000        | 3.660             | Offset          | 2.250        | 6.500         | 2.50        | TG-18250AF           | \$93.18        | TG-18250F            | \$98.25        |           |          |
|              |            |            |                     |                |              |              |                   |                 |              |               | 4.00        | TG-18400AF           | \$124.95       | TG-18400F            | \$130.99       |           |          |
|              |            |            |                     |                |              |              |                   |                 |              |               | 5.00        | TG-18500AF           | \$113.19       | TG-18500F            | \$122.81       |           |          |
|              |            |            |                     |                |              |              |                   |                 |              |               | 2.50        | TG-18252AF           | \$116.11       | TG-18252F            | \$122.81       |           |          |
|              |            |            |                     |                |              |              |                   |                 |              |               | 4.00        | TG-18402AF           | \$125.05       | TG-18402F            | \$135.68       |           |          |
|              |            |            |                     |                |              |              |                   |                 |              |               | 5.00        | TG-18502AF           | \$225.41       | TG-18502F            | \$195.32       |           |          |
|              |            |            |                     |                |              |              |                   |                 |              |               | 3.000       | 6.500                | 2.50           | TG-18256AF           | \$123.67       | TG-18256F | \$130.99 |
|              |            |            |                     |                |              |              |                   |                 |              |               | 5.00        | TG-18506AF           | \$171.87       | TG-18506F            | \$254.36       |           |          |
| TI-50-3/4-30 | 18         | 18" W & S  | 0.500               | 0.750          | 3/4          | 3.000        | 3.000             | Offset          | 2.500        | 6.000         | 3.00        | TG-18308AF*          | \$180.32       | TG-18308F*           | \$191.96       |           |          |
|              |            |            |                     |                |              |              |                   |                 |              |               | 5.00        | TG-18508AF*          | \$234.46       | TG-18508F*           | \$205.44       |           |          |
| TI-50-7/8-30 | 24         | HEAVY DUTY | 0.500               | 0.750          | 7/8          | 3.000        | 4.500             | Offset          | 3.000        | 7.500         | 3.50        | TG-18359AF*          | \$151.47       | TG-18359F*           | \$160.24       |           |          |
|              |            |            |                     |                |              |              |                   |                 |              |               | 5.00        | TG-18509AF*          | \$216.39       | TG-18509F*           | \$228.93       |           |          |
| TI-50-7/8-30 | 24         | HEAVY DUTY | 0.500               | 0.750          | 7/8          | 3.000        | 4.500             | Offset          | 3.000        | 7.500         | 3.00        | TG-24300AF           | \$258.97       | TG-24300F            | \$251.51       |           |          |
|              |            |            |                     |                |              |              |                   |                 |              |               | 5.00        | TG-24500AF           | \$341.74       | TG-24500F            | \$331.77       |           |          |

For "Pointed" Soft Jaws, please substitute "P" for "F" in the part number. Example: TG-15150AF will be TG-15150AP. For Pointed Jaws add \$6.50.  
Soft Jaw Material: ALUMINUM-6061-T6 Bar Stock, STEEL-1018, "B" JAWS-7075-T6 Aircraft Aluminum  
For complete list of applicable chucks, see pages 632-644. \* denotes non-stock item. Please allow 1 week manufacturing time.

## BORING STARS



- FEATURES:**
- Save set-up time.
  - Obtain any diameter
  - Easily and quickly.
  - Reduces soft jaw costs.
  - Allows straight through boring of soft jaws.

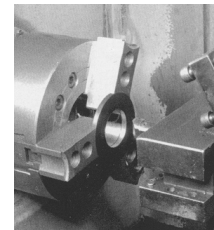
Set of 4 Boring Stars

Part # JBT-100  
**\$27.00/set**

## ANTI-BACKLASH RING SET



A valuable time saver for your lathes and turning centers!  
Every ring you will ever need for boring out your soft jaws on one convenient wooden rack.



| Description  | Number of Rings | Size                     | Part Number | Price    |
|--------------|-----------------|--------------------------|-------------|----------|
| Standard Set | 48              | 1 to 3-15/16 (1/16 inc.) | AI-220-00   | \$283.48 |
| Short Stack  | 16              | 1 to 1-15/16 (1/16 inc.) | AI-220-10   | \$82.26  |

Call Us Or Visit Our Website For Our Complete Selection!

2010-11 Master Catalog

47

LATHE CHUCKS  
LIVE CENTERS

VISE JAWS  
VISE ACCESSORIES

STRAIGHT SHANK  
COLLET HOLDERS

LATHE BUSHINGS  
DRILL CHUCKS

CARBIDE INSERTS  
THREADING/GROOVING

CUTTING TOOLS  
MACHINERY

PRECISION TOOLS  
DEBURRING

COOLANT/FLUIDS  
TOOL STORAGE