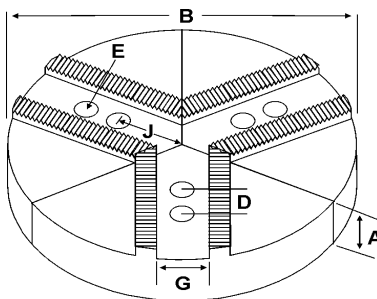
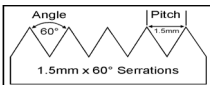
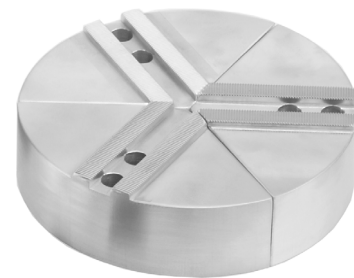


ROUND JAWS- 1.5 mm x 60° Serrations

FOR USE ON: **Kitagawa, Samchully, Strong, MMK, SMW Autoblok, Howa & Hitachi-Seiki Chucks**



- Round Jaws allow for complete gripping of workpiece
- Oversized jaws available
- Ideal for thin-walled or irregular shaped workpieces.
- Can be machined to fit workpiece
- Special "J" dimensions available
- Available in Aluminum, Cast Iron & Steel
- **Made in the USA**



Group **(K1)**



Group No.	Chuck Size	Critical Dimensions							ALUMINUM			CAST IRON		STEEL	
		Groove Width G	Screw Size E	Hole Space D	Hole to Front J	Pie Dia B	Height Inch A	Industry Ref #	Part Number	Price Set of 3	Part Number	Price Set of 3	Part Number	Price Set of 3	
K1-08-15	4	0.315 (8mm)	6mm	0.590 (15mm)	1.000	6	2.00	KTT-4P	6-RKT-4200A	\$74.63	6-RKT-4200CI	\$98.56	6-RKT-4200S	\$174.87	
		0.314	6mm	0.591	1.000	6	3.00	-	6-RKT-4300A	\$94.90	-	-	-		
		0.314	6mm	0.591	1.000	6	4.00	KTT4P1	6-RKT-4400A	\$117.01	-	-	-	-	
K1-10-14	4	0.394 (10mm)	8mm	0.551 (14mm)	1.000	6	2.00	-	6-RKT-4205A	\$74.63	6-RKT-4205CI	\$98.56	6-RKT-4205S	\$174.87	
							4.00	KW4P1	6-RKT-4405A*	\$149.26	-	-	-	-	
K1-10-17	5	0.394 (10mm)	8mm	0.709 (18mm)	1.688 (1-11/16)	6	2.00	HAR5MSHP	6-RHA-5200A	\$74.63	-	-	-	-	
							4.00	HAR5MSHP1	6-RHA-5400A	\$117.01	-	-	-	-	
K1-10-18	5	0.394 (10mm)	8mm	0.713 (18mm)	1.250	6	2.00	KTT5P	6-RKT-5203A	\$67.63	6-RKT-5203CI	\$98.56	6-RKT-5203S	\$174.12	
							4.00	KTT5P1	6-RKT-5403A	\$117.01	-	-	-	-	
K1-10-19	5	0.394 (10mm)	8mm	0.748 (19mm)	1.250	6	2.00	HOW5P	6-RKT-5200A	\$72.35	6-RKT-5200CI	\$98.56	6-RKT-5200S	\$174.87	
							3.00	-	6-RKT-5300A	\$101.67	6-RKT-5300CI	\$154.87	6-RKT-5300S	\$222.57	
							4.00	HOW5P1	6-RKT-5400A	\$117.01	-	-	-	-	
K1-11-17	5	0.433 (11mm)	8mm	0.669 (17mm)	1.844 (1-27/32)	6	2.00	SUG5PSTS	6-RSG-5200A	\$74.63	-	-	-	-	

Round Jaw Material: **ALUMINUM**-6061-T6 Bar Stock, **CAST IRON**-Gray, **STEEL**-1018

For complete list of applicable chucks, see pages 632-644.

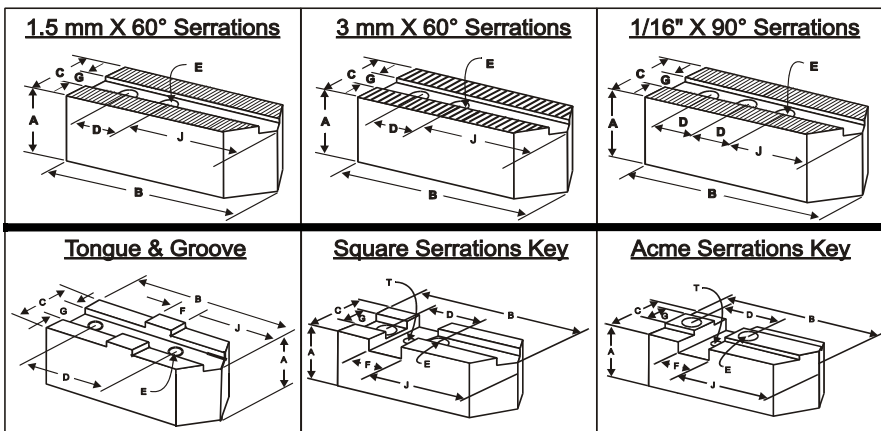
* denotes non-stock item. Please allow 1 week manufacturing time.

How To Order Soft Jaws, Round Jaws, Hard Jaws and Jaw Nuts

Using the "Critical Dimensions" Method:

1. Identify the type of jaw from the pictures below.
2. Find the proper chuck size on the left side of the table.
3. Check your **Critical Dimensions** against the table. Make sure that they match your requirements.
4. Choose your desired jaw height ("A" dimension).
5. Choose the material you require. (Aluminum, Steel, Cast Iron)
6. Use the Part Number shown on the right end of the table. Jaws are sold in sets of 3 pieces.

- **Part Numbers are for Flat Nose Jaws.** If you would like your jaws to be pointed, replace the "F" on the end of the part number with a "P". **Example:** KT-6200F will be KT-6200P. There is an additional charge for pointing.
- **If you cannot find the jaws you are looking for** or you require special jaws, please call us so that you may fill out a special jaw order form, located on pages 645-649.
- **If you know your chuck make and model:** See pages 632-644 for our extensive Jaw Finder.
- **Call your distributor-** we can convert any jaw supplier part number



6

1

Need Help Finding The Correct Chuck Jaws? See Our "Easy Jaw Finder" On Pages 632-644

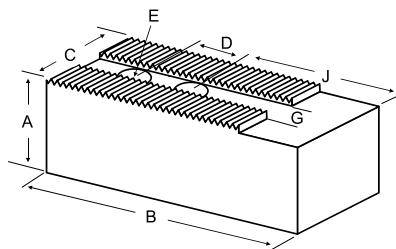
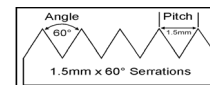
Call Us Today For All Of Your Machine Tool Needs!

2010-11 Master Catalog

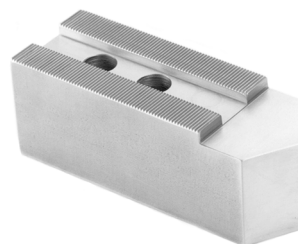
SOFT JAWS- 1.5 mm x 60° Serrations

C

FOR USE ON: **Kitagawa, Samchully, Strong, MMK, SMW Autoblok, Howa & Hitachi-Seiki Chucks**



- Supplies maximum concentricity on finish turning operations
- Can be bored or turned to fit workpiece
- Steel jaws can be hardened
- Available flat ended or pointed for smaller diameter parts
- Special orders available
- Available in Aluminum, Steel & Aircraft Aluminum (where noted)



Group

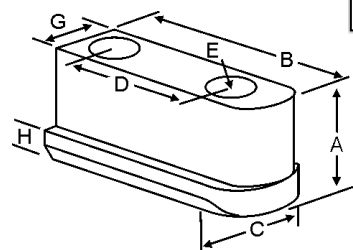


QUANTITY DISCOUNTS!
Order **5 SETS OR MORE** of the same part number soft jaw and receive a **5% DISCOUNT!**

Group No.	Chuck Size	Critical Dimensions			Hole to Front J	Width Inch C	Length Inch B	Hght Inch A	No. of Holes	ALUMINUM		STEEL	
		Groove Width G	Screw Size E	Hole Space D						FLAT END Part Number	Price Set Of 3	FLAT END Part Number	Price Set Of 3
K1-08-15	4	0.315 (8mm)	6mm	0.590 (15mm)	1.000	0.750	2.000	1.000	2	KT-4100AF	\$33.31	KT-4100F	\$36.03
B-04, BT-04								2.000	2	KT-4200AF	\$40.98	KT-4200F	\$44.22
K1-10-12	4	0.394 (10mm)	6mm	0.470 (12mm)	1.000	0.750	2.000	1.000	2	KT-4103AF	\$33.31	KT-4103F	\$36.03
								2.000	2	KT-4203AF	\$40.96	KT-4203F	\$44.22
K1-10-14	4	0.394 (10mm)	8mm	0.551 (14mm)	1.000	1.000	2.000	1.000	2	KT-4105AF	\$32.86	KT-4105F	\$35.51
B-204, B-205								2.000	2	KT-4205AF	\$39.69	KT-4205F	\$39.69
K1-10-18	5	0.394 (10mm)	8mm	0.713 (18mm)	1.250	1.000	2.375	1.500	2	KT-5153AF	\$33.47	KT-5153F	\$36.03
B-05, BT-05, HOB-5, HOBT-5								2.000	2	KT-5203AF	\$39.69	KT-5203F	\$39.69
								2.500	2	KT-5253AF	\$49.81	KT-5253F	\$54.04
								3.000	2	KT-5303AF	\$58.13	KT-5303F	\$62.24
								4.000	2	KT-5403AF	\$68.96	KT-5403F	\$73.69
	1.900	1.250	3.000	3.000	2	KT-5303AFL*	\$73.27	KT-5303FL*	\$79.49				
K1-10-19	5	0.394 (10mm)	8mm	0.748 (19mm)	1.250	1.000	2.375	1.500	2	KT-5150AF	\$33.47	KT-5150F	\$36.03
N-05, NT-05								2.500	2	KT-5250AF	\$41.18	KT-5250F	\$44.22
								3.000	2	KT-5300AF	\$58.13	KT-5300F	\$62.24
K1-11-17	5	0.433 (11mm)	8mm	0.669 (17mm)	1.270	1.000	2.375	1.500	2	NK-5150AF*	\$33.47	NK-5150F*	\$36.03
Nikko 5"								2.000	2	NK-5200AF*	\$42.62	NK-5200F*	\$45.86

For "Pointed" Soft Jaws, please substitute "P" for "F" in the part number. Example: KT-4100AF will be KT-4100AP. Add \$3.25 For Pointed Jaws
Soft Jaw Material: ALUMINUM-6061-T6 Bar Stock, STEEL-1018 or 1050, "B" JAWS-7075-T6 Aircraft Aluminum
For complete list of applicable chucks, see pages 632-644. * denotes non-stock item. Please allow 1 week manufacturing time.

JAW NUTS & SCREWS



USST

Kitagawa	MMK Matsumoto	Chuck Size	Critical Dimensions							2 Screws Included With Each Jaw Nut			
			Heel Height H	Groove Width G	Screw Size Pitch & Length E	Hole Space D	Hght Inch A	Width Inch C	Length Inch B	Jaw Nut Part Number	Price Each	Screw Part Number	Price Each
B-04, BT-04, HOB-4		4	0.220	0.312 (8mm)	M6-1.00x25mm	0.590 (15mm)	0.531	0.453	0.965	KT-40JN	\$31.80	M0610025	\$2.00
NL-04, AS-04, AT-04, HJ-4, N-04, NT-04	H-4(HPC), H4(NAK), H-4-21, HH-4	4	0.220	0.392 (10mm)	M8-1.25x30mm	0.551 (14mm)	0.710	0.590	1.030	KT-45JN	\$31.80	M0812530	\$2.00
B-204, B-205, N204/205, HS05		4/5	.220	0.394 (10mm)	M8-1.25x25mm	0.551 (14mm)	0.590	0.590	1.026	KT-204JN	\$25.60	M0812525	\$2.00
HOBT-5, B-05, BT-05, HOB-5		5	0.220	0.392 (10mm)	M8-1.25x25mm	0.713 (18mm)	0.612	0.550	1.180	KT-53JN	\$31.80	M0812525	\$2.00
HJ-5, N-05, NT-05		4	0.220	0.392 (10mm)	M8-1.25x25mm	0.748 (19mm)	0.612	0.550	1.180	KT-50JN	\$31.84	M0812525	\$2.00

Call Us Or Visit Our Website For Our Complete Selection!

2010-11 Master Catalog

19

LATHE CHUCKS
LIVE CENTERS

VISE JAWS
VISE ACCESSORIES

STRAIGHT SHANK
COLLET HOLDERS

LATHE BUSHINGS
DRILL CHUCKS

CARBIDE INSERTS
THREADING/GROOVING

CUTTING TOOLS
MACHINERY

PRECISION TOOLS
DEBURRING

COOLANT/FLUIDS
TOOL STORAGE