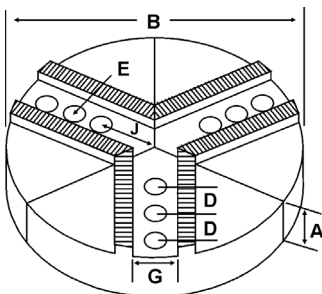
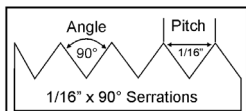
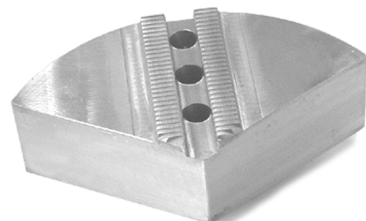


ROUND JAWS- 1/16" x 90° Serrations

FOR USE ON: **SMW Autoblok, Rohm, Pratt Burnerd & Other Chucks**



- Round Jaws allow for complete gripping of workpiece
- Oversized jaws available
- Ideal for thin-walled or irregular shaped workpieces.
- Can be machined to fit workpiece
- Max. length of serrations: 5.75"
- Special "J" dimensions available
- Available in Aluminum, Cast Iron & Steel
- **Made in the USA**



Group
11



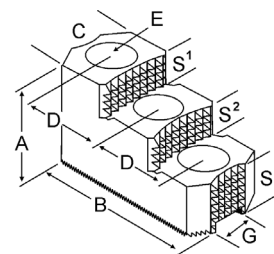
Group No.	Chuck Size	Critical Dimensions			Holeto Front J	Pie Dia B	Height Inch A	No. of Holes	Industry Ref #	ALUMINUM		CAST IRON		STEEL	
		Groove Width G	Screw Size E	Hole Space D						Part Number	Price Set of 3	Part Number	Price Set of 3	Part Number	Price Set of 3
I1-43-62	5	0.433 (11mm)	5/16	0.625 (16mm)	0.875	6	2.00	3	-	6-RPH-5256A	\$65.35	-	-	6-RPH-5256S	\$166.54
I1-43-71	5-6	0.433 (11mm)	5/16	0.718 (18mm)	1.150	6	2.00	3	-	RPH-6200A	\$73.75	RPH-6200CI	\$98.56	RPH-6200S	\$174.87
					1.150	6	3.00	3	-	RPH-6300A	\$101.67	-	-	-	-
					1.150	6	4.00	3	-	RPH-6400A	\$109.90	-	-	RPH-6400S	\$270.26
I1-47-59	5-6	0.473 (12mm)	5/16	0.591 (15mm)	0.900	6	2.00	2	-	6-RPH-5200A	\$65.83	-	-	6-RPH-5200S	\$174.87
I1-55-71	5-6	0.551 (14mm)	3/8	0.710 (18mm)	1.050	6	2.00	3	-	RPH-6205A	\$73.75	RPH-6205CI	\$98.56	RPH-6205S	\$174.87
					1.050	6	4.00	3	-	RPH-6405A	\$109.90	-	-	RPH-6405S	\$270.26
I1-55-87	5-10	0.551 (14mm)	3/8	0.875 (22mm)	1.650	8	2.00	3	-	8-RPH-6201A	\$109.60	8-RPH-6201CI	\$126.72	8-RPH-6201S	\$242.24
					1.650	8	4.00	3	-	8-RPH-6401A	\$157.22	-	-	8-RPH-6401S	\$413.33
					1.913	10	2.00	3	-	RPH-10205A	\$145.76	RPH-10205CI	\$190.08	RPH-10205S	\$365.63
					1.913	10	4.00	3	-	RPH-10405A	\$216.32	RPH-10405CI	\$337.91	-	-
I1-55-98	5-6	0.551 (14mm)	3/8	0.984 (25mm)	1.420	6	2.00	2	-	RSM-6200A	\$74.63	RSM-6200CI	\$98.56	RSM-6200S	\$174.87
					1.420	6	4.00	2	-	RSM-6400A	\$117.01	-	-	RSM-6400S	\$270.26
I1-66-87	8	0.669 (17mm)	1/2	0.875 (22mm)	1.650	8	2.00	3	-	RPH-8200A	\$109.60	RPH-8200CI	\$126.72	RPH-8200S	\$254.36
I1-66-100	8	0.669 (17mm)	1/2	1.000 (25.5mm)	2.250	8	2.00	2	-	RPH-8201A	\$112.30	RPH-8201CI	\$126.72	RPH-8201S	\$254.36
						8	4.00	2	-	RPH-8401A	\$157.22	-	-	RPH-8401S	\$413.33
						10	2.00	2	-	10-RPH-8201A	\$147.37	-	-	-	-
						12	2.00	2	-	12-RPH-8201A	\$260.97	-	-	-	-
I1-66-112	8	0.669 (17mm)	1/2	1.125 (28.5mm)	1.125	8	2.00	3	SMW8P	RSM-8200A	\$112.30	RSM-8200CI	\$126.72	RSM-8200S	\$254.36
						8	4.00	3	SMW8P1	RSM-8400A	\$157.22	-	-	RSM-8400S	\$413.33

Round Jaw Material: ALUMINUM-6061-T6 Bar Stock, CAST IRON-Gray, STEEL-1018. 18" & Larger- Aluminum Casting T6
For complete list of applicable chucks, see pages 632-644.
* denotes non-stock item. Please allow 1 week manufacturing time.

HARD JAWS-2 STEP 1/16" x 90° SERRATIONS



- FEATURES:**
- Designed for first operation roughing, expect standard runout between 0.005-0.010
 - Reversible-suitable for OD & ID workholding.
 - **XTRA BITE** -very aggressive bite. Has conical teeth for extra gripping power and ground body to provide improved runout.



Group Number	Chuck Size	Critical Dimensions			Width Inch C	OAL Inch B	Height Inch A	No. of Holes	No. of Steps	Top Step Ht S1	Mid Step Ht S2	Bot Step Ht S3	Part Number	Price Per Set
		Groove Width G	Screw Size E	Hole Space D										
I1-43-71	6	0.433 (11mm)	5/16	0.719 (18.5mm)	1.250	3.000	2.000	3	2	0.500	0.500	1.000	PH-60HJ2-X	\$395.83
I1-55-87	6	0.551 (14mm)	3/8	0.875 (22mm)	1.250	3.000	2.000	3	2	0.375	0.375	1.250	PH-61HJ2-X	\$395.83
I1-66-94	8	0.669 (17mm)	1/2	0.945 (24mm)	1.500	3.500	1.969	3	2	0.530	0.530	0.909	PH-80HJ2-X	\$427.50

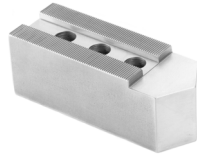
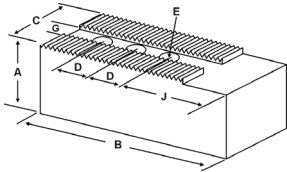
Call Us Today For All Of Your Machine Tool Needs!

2010-11 Master Catalog

SOFT JAWS- 1/16" x 90° Serrations

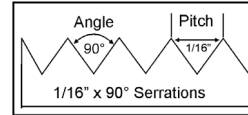
C

FOR USE ON: **SMW Autoblok, Rohm, Pratt Burnerd & Other Chucks**



QUANTITY DISCOUNTS!

Order **5 SETS OR MORE** of the same part number soft jaw and receive a **5% DISCOUNT!**



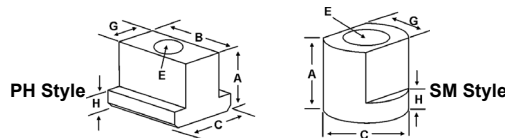
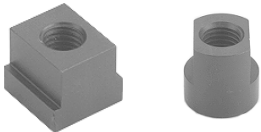
Group No.	Chuck Size	Critical Dimensions			• Max. length of serrations: 5.75"					ALUMINUM		STEEL	
		Groove Width G	Screw Size E	Hole Space D	Hole to Front J	Width Inch C	Length Inch B	Hght Inch A	No. of Holes	FLAT END Part Number	Price Set Of 3	FLAT END Part Number	Price Set Of 3
I1-43-62	5	0.433 (11mm)	5/16	0.625 (16mm)	0.875	1.00	2.500	1.50	3	PH-5156AF	\$35.33	PH-5156F	\$38.04
								2.00	3	PH-5256AF	\$41.13	PH-5256F	\$44.22
I1-43-71	5 - 6	0.433 (11mm)	5/16	0.718 (18mm)	1.250	1.25	3.125	1.50	3	PH-6150AF	\$38.52	PH-6150F	\$39.38
SP 125, STP 125, STWP 125								2.00	3	PH-6200AF	\$47.80	PH-6200F	\$51.26
								2.50	3	PH-6250AF	\$49.49	PH-6250F	\$52.91
								3.00	3	PH-6300AF	\$58.97	PH-6300F	\$49.96
I1-47-59	5 - 6	0.473 (12mm)	5/16	0.591 (15mm)	0.900	1.00	2.500	1.50	3	PH-5150AF	\$35.33	PH-5150F	\$38.04
I1-47-63	5 - 6	0.472	8mm	0.630	0.900	1.00	2.500	1.00	3	PH-5100AF	\$35.33	PH-5100F	\$38.04
						1.25	2.500	2.00	3	PH-5200AF	\$47.80	PH-5200F	\$47.82
I1-55-71	5 - 6	0.551 (14mm)	3/8	0.710 (18mm)	1.150	1.25	3.000	1.50	3	PH-6155AF	\$37.03	PH-6155F	\$39.75
								3.00	3	PH-6305AF	\$47.70	PH-6305F	\$50.89
I1-55-78	5-6	0.551 (14mm)	3/8	0.787	1.625	1.25	3.000	2.00	3	HA-6200AF	\$47.79	HA-6200F	\$47.82
								3.00	3	HA-6300AF	\$54.13	HA-6300F	\$49.96
								4.00	3	HA-6400AF	\$96.36	HA-6400F	\$102.49
I1-55-87	5 - 10	0.551 (14mm)	3/8	0.875 (22mm)	2.125	1.50	4.375	1.50	3	PH-6151AF	\$44.68	PH-6151F	\$47.69
								2.00	3	PH-6201AF	\$52.76	PH-6201F	\$56.22
								2.50	3	PH-6251AF	\$51.65	PH-6251F	\$58.82
								3.00	3	PH-6301AF	\$70.02	PH-6301F	\$74.41
								4.00	3	PH-6401AF	\$96.37	PH-6401F	\$102.50
					2.325	1.75	4.750	2.00	3	PH-10205AF	\$62.16	PH-10205F	\$49.96
								4.00	3	PH-10405AF	\$86.22	PH-10405F	\$71.17
					3.575	2.00	6.000	3.00	3	PH-10306AF	\$90.51	PH-10306F	\$95.39
								4.00	3	PH-10406AF	\$108.96	PH-10406F	\$114.48
I1-55-98	5 - 6	0.551 (14mm)	3/8	0.984 (25mm)	1.650	1.25	3.250	1.50	2	SM-6150AF	\$37.08	SM-6150F	\$39.75
								3.00	2	SM-6300AF	\$73.43	SM-6300F	\$50.89
I1-59-81	6	0.590	10mm	0.810	0.750	1.00	2.000	2.00	2	PB-6200AF	\$47.75	PB-6200F	\$42.08
I1-66-87	5 - 10	0.669 (17mm)	3/8	0.875 (22mm)	1.550	1.25	3.250	2.00	2	PH-6203AF	\$52.40	PH-6203F	\$56.22
SMW Autoblok BB-D 210, BH-D 210	8	0.669 (17mm)	1/2	0.875 (22mm)	2.125	1.50	4.375	2.00	3	PH-8200AF	\$51.76	PH-8200F	\$55.12
								3.00	3	PH-8300AF	\$70.02	PH-8300F	\$74.41
								4.00	3	PH-8400AF	\$67.83	PH-8400F	\$71.55
I1-66-100	8	0.669 (17mm)	1/2	1.000 (25.5mm)	1.725	1.50	4.375	2.00	3	PH-8201AF*	\$52.77	PH-8201F*	\$56.22
PBA 9821-2110								3.00	3	PH-8301AF*	\$70.02	PH-8301F*	\$74.41
								4.00	3	PH-8401AF*	\$80.95	PH-8401F*	\$87.83
I1-66-112	8	0.669 (17mm)	1/2	1.125 (28.5mm)	1.750	1.50	3.500	2.00	2	SM-8200AF*	\$50.58	SM-8200F*	\$54.05
								3.00	2	SM-8300AF*	\$75.15	SM-8300F*	\$80.30
								5.00	2	SM-8500AF*	\$160.49	SM-8500F*	\$174.12
I1-71-83	8	0.710	12mm	0.830	0.840	1.75	3.000	2.00	2	PB-6201AF	\$52.17	PB-6201F	\$52.42

For "Pointed" Soft Jaws, please substitute "P" for "F" in the part number. Example: PH-5156AF will be PH-5156AP. For Pointed Jaws Add \$3.25.

Soft Jaw Material: ALUMINUM-6061-T6 Bar Stock, STEEL-1018, "B" JAWS-7075-T6 Aircraft Aluminum

For complete list of applicable chucks, see pages 632-644. * denotes non-stock item. Please allow 1 week manufacturing time.

TEE NUTS & SCREWS



Chuck Size	SMW Autoblok	Critical Dimensions						1 Free Screw Included With Each Jaw Nut			
		Heel Height H	Groove Width G	Screw Size E	Hght Inch A	Width Inch C	Length Inch B	TeeNut Part Number	Price Each	Screw Part Number	Price Each
5	-	0.250	0.433	5/16"-18 x 1.00"	0.590	0.530	0.620	PH-56TN	\$18.17	S5/1618100	\$2.00
5 - 6	HF-KS 13032	0.235	0.433	5/16"-18 x 1.25"	0.780	0.685	0.750	PH-60TN	\$18.17	S5/1618125	\$2.00
5 - 10	-	0.250	0.550	3/8"-16 x 1.00"	0.605	0.750	0.750	PH-61TN	\$18.17	S3/816100	\$2.00
5 - 6	-	0.370	0.550	3/8"-16 x 1.50"	1.040	0.790	0.790	SM-65TN	\$19.63	S3/816150	\$2.00
8	-	0.370	0.668	1/2"-13 x 1.50"	1.080	1.080	0.910	SM-80TN	\$19.63	S1/213150	\$2.00

Call Us Or Visit Our Website For Our Complete Selection!

2010-11 Master Catalog

37

LATHE CHUCKS
LIVE CENTERS

VISE JAWS
VISE ACCESSORIES

STRAIGHT SHANK
COLLET HOLDERS

LATHE BUSHINGS
DRILL CHUCKS

CARBIDE INSERTS
THREADING/GROOVING

CUTTING TOOLS
MACHINERY

PRECISION TOOLS
DEBURRING

COOLANT/FLUIDS
TOOL STORAGE