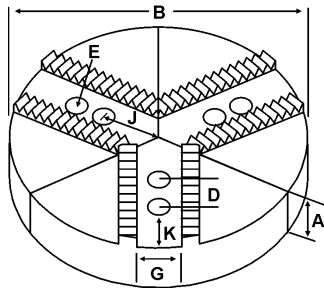
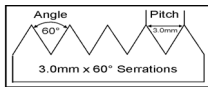
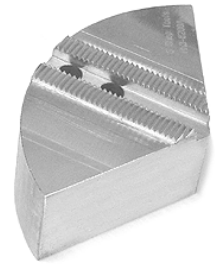


ROUND JAWS- 3.0 mm x 60° Serrations

FOR USE ON: **MMK Matsumoto, Howa & Other Chucks**



WARNING!
These jaw have **3.0mm x 60°** serrations. Jaws using **1.5mm x 60°** serrations can be found on pages **18-31**



- Round Jaws allow for complete gripping of workpiece
- Oversized jaws available
- Ideal for thin-walled or irregular shaped workpieces.
- Can be machined to fit workpiece
- Max. length of serrations: 5.75"
- All jaws have 2 holes
- Special "J" dimensions available
- Available in Aluminum, Cast Iron & Steel
- **Made in the USA**

Group
K3



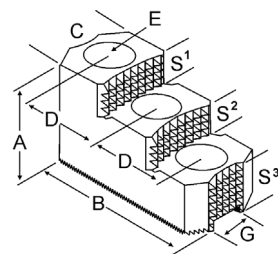
Group No.	Chuck Size	Critical Dimensions				ALUMINUM			CAST IRON		STEEL			
		Groove Width G	Screw Size E	Hole Space D	Hole to Front J	Part Number	Price Set of 3	Part Number	Price Set of 3	Part Number	Price Set of 3			
K3-12-20	6	0.472 (12mm)	10mm	0.787 (20mm)	1.375	6	2.00	-	RH3-6200A	\$74.63	RH3-6200CI	\$98.56	RH3-6200S	\$174.87
							4.00	-	RH3-6400A	\$117.01	-	-	-	-
K3-14-25	8	0.551 (14mm)	12mm	0.985 (25mm)	2.250	8	2.00	HOW8P	RH3-8200A	\$104.03	RH3-8200CI	\$126.72	RH3-8200S	\$254.36
							4.00	HOW8P1	RH3-8400A	\$141.23	RH3-8400CI	\$239.35	-	-
							2.00	-	10-RH3-8200A	\$147.37	-	-	-	-
							2.00	-	12-RH3-8200A*	\$191.51	-	-	-	-
K3-15-30	10	0.591 (15mm)	12mm	1.181 (30mm)	2.250	12	2.00	-	RH3-10204A	\$147.37	RH3-10204CI	\$190.08	-	-
						10	4.00	-	RH3-10404A	\$227.31	-	-	-	-
K3-16-30	10	0.630 (16mm)	12mm	1.181 (30mm)	2.375	10	2.00	-	RH3-10200A	\$130.44	RH3-10200CI	\$190.08	RH3-10200S	\$365.63
						10	2.00	HOW10P	RH3-10200A4	\$130.44	-	-	-	-
						10	4.00	-	RH3-10400A	\$202.41	-	-	-	-
						10	4.00	HOW10P1	RH3-10400A4	\$202.41	-	-	-	-
						10	5.00	-	RH3-10500A*	\$302.45	-	-	-	-
						12	2.50	-	12-RH3-10250A*	\$238.29	-	-	-	-
						12	4.00	-	12-RH3-10400A*	\$380.07	-	-	-	-
						15	2.50	-	15-RH3-10250A*	\$439.39	-	-	-	-
K3-18-30	12	0.709 (18mm)	14mm	1.181 (30mm)	3.625	12	2.00	HOW12P	RH3-12200A	\$191.51	RH3-12200CI	\$281.59	-	-
						12	2.50	-	RH3-12250A	\$238.29	-	-	-	-
						12	3.00	-	RH3-12300A	\$267.26	-	-	-	-
						12	4.00	HOW12P1	RH3-12400A	\$331.00	-	-	-	-
						12	5.00	-	RH3-12500A	\$423.80	-	-	-	-
						15	2.50	-	15-RH3-12250A	\$439.39	-	-	-	-
						15	3.00	HOW15-12P	15-RH3-12300A	\$459.00	-	-	-	-
						18	3.00	HOW18-12P	18-RH3-12300A	\$599.40	-	-	-	-

Round Jaw Material: **ALUMINUM**-6061-T6 Bar Stock, **CAST IRON**-Gray, **STEEL**-1018. 18" & Larger- Aluminum Casting T6
For complete list of applicable chucks, see pages 632-644. * denotes non-stock item. Please allow 1 week manufacturing time.

HARD JAWS-2 STEP 3.0mm X 60° SERRATIONS



- FEATURES:**
- Designed for first operation roughing, expect standard runout between **0.005-0.010**
 - Reversible-suitable for OD & ID workholding.
 - **XTRA BITE** -very aggressive bite. Has conical teeth for extra gripping power and ground body to provide improved runout.
 - 1 & 2 step jaws available.



Group Number	Chuck Size	Critical Dimensions				Width Inch C	OAL Inch B	Height Inch A	No. of Holes	No. of Steps	Top Step Ht S1	Mid Step Ht S2	Bot Step Ht S3	Part Number	Price Per Set
		Groove Width G	Screw Size E	Hole Space D	Hole to Front J										
K3-16-30	10	0.630 (16mm)	12mm	1.181 (30mm)	1.750	4.250	2.500	3	2	0.650	0.650	1.200	H3-100HJ2-X	\$617.50	
K3-18-30	12	0.710 (18mm)	14mm	1.181 (30mm)	1.750	4.875	2.469	3	2	0.650	0.650	1.169	H3-120HJ2-X	\$665.00	
	15-20	1.023 (26mm)	20mm	1.969 (50mm)	2.500	6.500	3.469	3	2	0.950	0.950	1.569	H3-150HJ2-X	\$791.67	

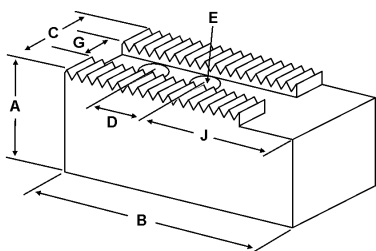
Call Us Today For All Of Your Machine Tool Needs!

2010-11 Master Catalog

SOFT JAWS- 3.0 mm x 60° Serrations

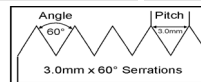
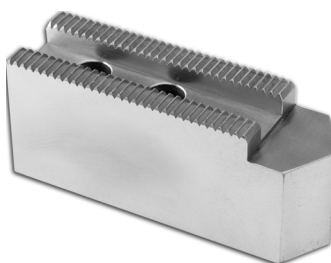
C

FOR USE ON: **MMK Matsumoto, Howa & Other Chucks**



WARNING!
These jaw have **3.0mm x 60°** serrations. Jaws using **1.5mm x 60°** serrations can be found on pages **18-31**

- Supplies maximum concentricity on finish turning operations
- Can be bored or turned to fit workpiece
- Steel jaws can be hardened
- Available flat ended or pointed for smaller diameter parts
- Special orders available
- Available in Aluminum, Steel & Aircraft Aluminum (where noted)
- **Made in the USA**



QUANTITY DISCOUNTS!
Order **5 SETS OR MORE** of the same part number soft jaw and receive a **5% DISCOUNT!**

Group No.	Chuck Size	Critical Dimensions				ALUMINUM				STEEL			
		Groove Width G	Screw Size E	Hole Space D	Hole to Front J	Width Inch C	Length Inch B	Hght Inch A	No. of Holes	FLAT END Part Number	Price Set Of 3	FLAT END Part Number	Price Set Of 3
K3-12-20	6	0.472 (12mm)	10mm	0.787 (20mm)	1.375	1.250	2.750	1.50	2	H3-6150AF	\$40.76	H3-6150F	\$43.83
H-6,HA5-6 HO1MA6								2.50	2	H3-6250AF	\$56.25	H3-6250F	\$60.35
K3-14-25	8	0.551 (14mm)	12mm	0.985 (25mm)	2.000	1.500	3.750	2.00	2	H3-8200AF	\$54.15	H3-8200F	\$57.87
HJ-08 HO1MA8								4.00	2	H3-8400AF	\$71.72	H3-8400F	\$76.04
K3-15-30	10 to 12	0.591 (15mm)	12mm	1.181 (30mm)	2.625	1.500	4.750	2.00	2	H3-10204AF	\$58.94	H3-10204F	\$62.83
								4.00	2	H3-10404AF	\$78.26	H3-10404F	\$82.68
K3-16-30	10 to 12	0.630 (16mm)	12mm	1.181 (30mm)	2.625	1.500	4.750	2.00	2	H3-10200AF	\$58.94	H3-10200F	\$62.83
HW-10,HW-12 HO1MA10								4.00	2	H3-10400AF	\$78.26	H3-10400F	\$82.68
K3-18-30	10 to 14	0.709 (18mm)	14mm	1.181 (30mm)	3.125	2.000	5.500	2.50	2	H3-12250AF	\$78.18	H3-12250F	\$82.68
HO1MA12								4.00	2	H3-12400AF	\$102.24	H3-12400F	\$107.47

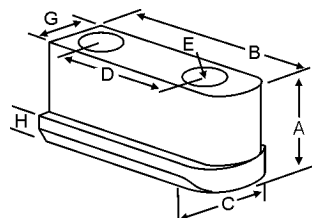
For "Pointed" Soft Jaws, please substitute "P" for "F" in the part number. Example: H3-6150AF will be H3-6150AP

For Pointed Jaws: Up to 10" add \$3.25. 12" and over add \$6.50

Soft Jaw Material: ALUMINUM-6061-T6 Bar Stock, STEEL-1018, "B" JAWS-7075-T6 Aircraft Aluminum

For complete list of applicable chucks, see pages 632-644. * denotes non-stock item. Please allow 1 week manufacturing time.

JAW NUTS & SCREWS



Chuck Make & Model	Critical Dimensions				2 Screws Included With Each Jaw Nut				Jaw Nut Part Number	Price Each	Screw Part Number	Price Each
	Heel Height H	Groove Width G	Screw Size E	Hole Space D	Hght Inch A	Width Inch C	Length Inch B					
MMK:HO15M6,HO22M6,HO24M6, HO27M6 Howa: HJ-06	0.295	0.472 (12mm)	M10-1.60 x 30mm	0.787 (20mm)	0.847	0.669	1.460	H3-60JN	\$28.62	M1016030	\$2.00	
-	0.340	0.628 (16mm)	M12-1.75 x 35mm	1.181 (30mm)	1.000	0.910	2.000	H3-100JN	\$55.66	M1217535	\$2.00	

POWER CHUCK LUBRICANT

FEATURES:

- Double to Triple Clamping Pressure.
- Keeps Work Piece Clamped in Place.
- Provides Boundary Lubrication Protection.
- Lowers Friction and Wear.
- Assists in Wear-In of New Chucks
- Lowers Maintenance Costs.
- High Resistance to Centrifuge Force.

Quantity Discounts	
Each	List
12-23	Save 10%
24-35	Save 12%
36 +	Save 15%

REMINDER!
For optimum performance, it is recommended that you grease your chuck once per shift.



Container Size	Case Qty	Part Number	Price Each
4 Oz Cartridge	24	EZ-21471	\$5.86
4 Oz Cartridge w/ grease gun	each	EZ-OKIT-21471	\$31.93
16 Oz Cartridge	12	EZ-21478	\$17.93
10 Lb Pail	each	EZ-21444	\$146.98
40 Lb Pail	each	EZ-21445	\$561.04
135 Lb Keg	each	EZ-21446	\$1,848.83
450 Lb Drum	each	EZ-21448	\$5,894.85

Call Us Or Visit Our Website For Our Complete Selection!

LATHE CHUCKS
LIVE CENTERS

VISE JAWS
VISE ACCESSORIES

STRAIGHT SHANK
COLLET HOLDERS

LATHE BUSHINGS
DRILL CHUCKS

CARBIDE INSERTS
THREADING/GROOVING

CUTTING TOOLS
MACHINERY

PRECISION TOOLS
DEBURRING

COOLANT/FLUIDS
TOOL STORAGE