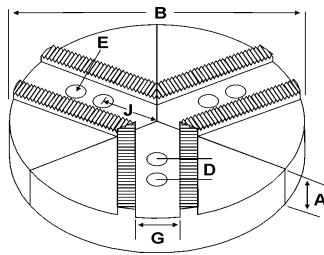
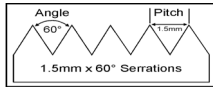
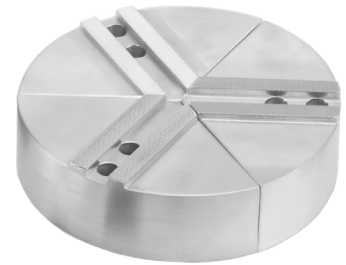


ROUND JAWS- 1.5 mm x 60° Serrations

FOR USE ON: **Kitagawa, Samchully, Strong, MMK, SMW Autoblok, Howa & Hitachi-Seiki Chucks**



- Round Jaws allow for complete gripping of workpiece
- Oversized jaws available
- Ideal for thin-walled or irregular shaped workpieces.
- Can be machined to fit workpiece
- Special "J" dimensions available
- Available in Aluminum, Cast Iron & Steel
- **Made in the USA**



Group

K1



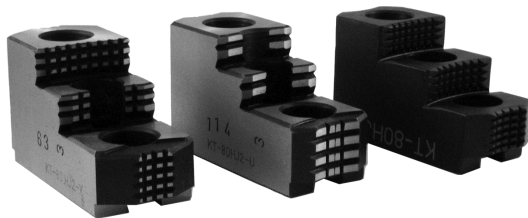
Group No.	Chuck Size	Critical Dimensions				Pie Dia B	Height Inch A	Industry Ref #	ALUMINUM		CAST IRON		STEEL			
		Groove Width G	Screw Size E	Hole Space D	Hole to Front J				Part Number	Price Set of 3	Part Number	Price Set of 3	Part Number	Price Set of 3		
K1-11-20	6	0.433 (11mm)	10mm	0.787 (20mm)	1.625	6		2.00	-	RHO-6200A	\$74.63	RHO-6200CI	\$98.56	RHO-6200S	\$174.87	
								3.00	-	RHO-6300A	\$101.67	RHO-6300CI	\$154.87	RHO-6300S	\$222.57	
								4.00	-	RHO-6400A	\$117.01	RHO-6400CI*	\$168.95	RHO-6400S	\$270.26	
								8	2.00	-	8-RHO-6200A	\$112.30	8-RHO-6200CI	\$126.72	-	-
K1-11-25	6	0.433 (11mm)	8mm	0.985 (25mm)	1.625	6		2.00	SUG6PSTS	RSG-6200A	\$69.12	RSG-6200CI	\$98.56	RSG-6200S*	\$174.87	
								3.00	-	RSG-6300A	\$101.67	RSG-6300CI	\$154.87	RSG-6300S	\$222.57	
								4.00	SUG6P1STS	RSG-6400A	\$107.46	-	-	RSG-6400S	\$270.26	
								8	2.00	-	8-RSG-6200A	\$112.30	8-RSG-6200CI	\$126.72	8-RSG-6200S	\$254.36
K1-12-20	6	0.472 (12mm)	10mm	0.787 (20mm)	1.625	6		2.00	-	10-RSG-6200A	\$147.37	-	-	-		
								2.00	AKT6FG	RKT-6200A	\$68.17	RKT-6200CI	\$98.56	RKT-6200S	\$174.87	
								3.00	AKT6MHFG	RKT-6300A	\$101.67	RKT-6300CI	\$154.87	RKT-6300S	\$222.57	
								4.00	KTT6P1	RKT-6400A	\$105.72	-	-	RKT-6400S	\$270.26	
K1-14-20	6	0.551 (14mm)	10mm	0.790 (20mm)	1.625	8		2.00	KTT8-6P	8-RKT-6200A	\$104.03	8-RKT-6200CI	\$126.72	8-RKT-6200S	\$254.36	
								4.00	KTT8-6P1	8-RKT-6400A	\$141.23	8-RKT-6400CI	\$239.35	-	-	
								10	2.00	KTT10-6P	10-RKT-6200A	\$147.37	-	-	-	-
								2.00	-	RNK-6200A	\$74.63	RNK-6200CI	\$98.56	RNK-6200S	\$174.87	
K1-14-20	6	0.551 (14mm)	10mm	0.790 (20mm)	1.625	6		3.00	-	RNK-6300A	\$101.67	RNK-6300CI	\$154.87	RNK-6300S	\$184.31	
								4.00	-	RNK-6400A	\$117.01	-	-	RNK-6400S	\$22.81	

Round Jaw Material: ALUMINUM-6061-T6 Bar Stock, CAST IRON-Gray, STEEL-1018

For complete list of applicable chucks, see pages 632-644.

* denotes non-stock item. Please allow 1 week manufacturing time.

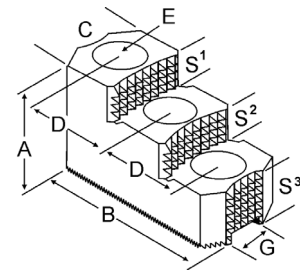
HARD JAWS



XTRA BITE (-X) GRIP-RITE (-U) SHARK JAW

FEATURES:

- Designed for first operation roughing, expect standard runoff between **0.005-0.010**
- Reversible-suitable for OD & ID workholding.
- **XTRA BITE** -very aggressive bite. Has conical teeth for extra gripping power and ground body to provide improved runoff.
- **GRIP-RITE-OEM Style** hard jaws have ground tips and provide better runoff.
- **SHARK JAWS** have conical teeth for extra gripping power and black oxide for long life. Ideal for castings and scaly material. Made in the USA.
- 1 & 2 step jaws available.



Group Number	Chuck Size	Critical Dimensions				Width Inch C	OAL Inch B	Height Inch A	No. of Holes	No. of Steps	Top Step Ht S1	Mid Step Ht S2	Bot Step Ht S3	Part Number	Price Per Set	Style	Code
		Groove Width G	Screw Size E	Hole Space D	Hole to Front J												
K1-11-20	6	0.433 (11mm)	10mm	0.787 (20mm)	1.250	2.900	2.000	3	2	0.500	0.500	1.000	HO-60HJ2	\$380.16	Shark Jaws	D	
K1-11-25	6	0.433 (11mm)	8mm	0.985 (25mm)	1.250	3.000	1.969	3	2	0.500	0.500	0.969	SG-60HJ2-X	\$285.00	Xtra-bite	E	
K1-12-20	6	0.472 (12mm)	10mm	0.787 (20mm)	1.220	2.900	2.000	3	1	0.500	-	1.000	KT-60HJ1	\$313.10	Shark Jaws	D	
					1.220	2.646	1.423	3	1	0.359	-	1.064	KT-60HJ1-U	\$252.94	OEM Style	E	
					1.250	3.000	1.969	3	1	1.000	-	0.969	KT-60HJ1-X	\$266.25	Xtra-bite	E	
					1.220	2.900	2.000	3	2	0.500	0.500	1.000	KT-60HJ2	\$313.10	Shark Jaws	D	
					1.220	2.728	1.740	3	2	0.402	0.402	0.936	KT-60HJ2-U	\$252.94	OEM Style	E	
1.250	3.000	1.969	3	2	0.500	0.500	0.969	KT-60HJ2-X	\$266.25	Xtra-bite	E						

Call Us Today For All Of Your Machine Tool Needs!

MACHINE VISES
MAGNETIC CHUCKS

RETENTION KNOBS
ER, DA, TG COLLETS

TOOLHOLDERS
TAP HOLDERS

INDEXABLE DRILLS
TURNING & BORING

ENDMILLS, DRILLS
TAPS & REAMERS

ABRASIVES
MEASURING TOOLS

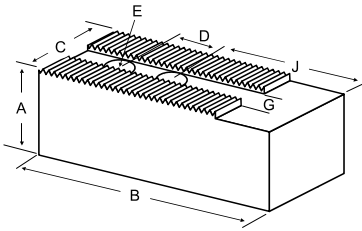
MRO & SAFETY
FLAT STOCK/DRILL ROD

CHUCK JAWS
LATHE WORKHOLDING

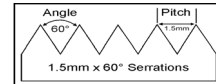
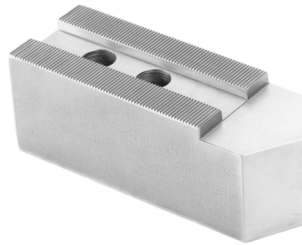
SOFT JAWS- 1.5 mm x 60° Serrations

C

FOR USE ON: **Kitagawa, Samchully, Strong, MMK, SMW Autoblok, Howa & Hitachi-Seiki Chucks**



- Supplies maximum concentricity on finish turning operations
- Can be bored or turned to fit workpiece
- Steel jaws can be hardened
- Available flat ended or pointed for smaller diameter parts
- Special orders available
- Available in Aluminum, Steel & Aircraft Aluminum (where noted)



Group



QUANTITY DISCOUNTS!
Order **5 SETS OR MORE** of the same part number soft jaw and receive a **5% DISCOUNT!**

LATHE CHUCKS
LIVE CENTERS

VISE JAWS
VISE ACCESSORIES

STRAIGHT SHANK
COLLET HOLDERS

LATHE BUSHINGS
DRILL CHUCKS

CARBIDE INSERTS
THREADING/GROOVING

CUTTING TOOLS
MACHINERY

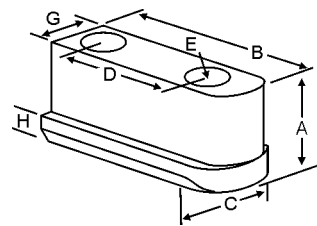
PRECISION TOOLS
DEBURRING

COOLANT/FLUIDS
TOOL STORAGE

Group No.	Chuck Size	Critical Dimensions				ALUMINUM					STEEL		
		Groove Width G	Screw Size E	Hole Space D	Hole to Front J	Width Inch C	Length Inch B	Hght Inch A	No. of Holes	FLAT END Part Number	Price Set Of 3	FLAT END Part Number	Price Set Of 3
K1-11-20	6	0.433 (11mm)	10mm	0.787 (20mm)	1.625	1.250	3.000	1.500	2	HO-6150AF	\$35.88	HO-6150F	\$38.50
								2.000	2	HO-6200AF	\$41.31	HO-6200F	\$44.22
								2.500	2	HO-6250AF	\$49.74	HO-6250F	\$53.22
								3.000	2	HO-6300AF	\$58.94	HO-6300F	\$63.06
K1-11-25	6	0.433 (11mm)	8mm	0.985 (25mm)	1.625	1.000	1.500	2	SG-6150AF	\$35.80	SG-6150F	\$36.91	
							2.500	2	SG-6250AF	\$44.60	SG-6250F	\$44.60	
						1.250	3.000	2	SG-6300AF	\$45.09	SG-6300F	\$45.09	
							1.500	2	SG-6152AF	\$40.27	SG-6152F	\$43.25	
K1-12-20	6	0.472 (12mm)	10mm	0.787 (20mm)	1.625	1.250	3.000	1.000	2	KT-6100AF	\$33.97	KT-6100F	\$36.57
								1.500	2	KT-6150AF	\$35.88	KT-6150F	\$24.45
								1.500	2	KT-6150BF	\$49.49	-	-
								2.000	2	KT-6200AF	\$43.35	KT-6200F	\$28.87
								2.000	2	KT-6200BF	\$62.41	-	-
								2.500	2	KT-6250AF	\$44.60	KT-6250F	\$33.33
						2.000	3.000	2	KT-6300AF	\$54.41	KT-6300F	\$37.79	
							3.000	2	KT-6300BF	\$69.11	-	-	
							3.500	2	KT-6350AF	\$70.41	KT-6350F	\$75.36	
							4.000	2	KT-6400AF	\$77.27	KT-6400F	\$82.68	
							1.500	2	KT-6152AF	\$66.59	KT-6152F	\$71.55	
							3.000	2	KT-6302AF	\$77.51	KT-6302F	\$82.68	
K1-14-20	6	0.551 (14mm)	10mm	0.790 (20mm)	1.625	1.250	3.000	1.250	2	KT-6500AF*	\$156.87	KT-6500F*	\$170.19
								1.500	2	KT-6151AF	\$42.25	KT-6151F	\$45.32
K1-14-20	6	0.551 (14mm)	10mm	0.790 (20mm)	1.625	1.250	3.000	1.500	2	NK-6150AF	\$35.88	NK-6150F	\$38.50
								2.500	2	NK-6250AF	\$49.74	NK-6250F	\$53.22

For "Pointed" Soft Jaws, please substitute "P" for "F" in the part number. Example: HO-6200AF will be HO-6200AP. Add \$3.25 For Pointed Jaws
Soft Jaw Material: ALUMINUM-6061-T6 Bar Stock, STEEL-1018 or 1050, "B" JAWS-7075-T6 Aircraft Aluminum
For complete list of applicable chucks, see pages 632-644. * denotes non-stock item. Please allow 1 week manufacturing time.

JAW NUTS & SCREWS



Chuck Make & Model	Chuck Size	Critical Dimensions							2 Screws Included With Each Jaw Nut			
		Heel Height H	Groove Width G	Screw Size Pitch & Length E	Hole Space D	Hght Inch A	Width Inch C	Length Inch B	Jaw Nut Part Number	Price Each	Screw Part Number	Price Each
-	6	0.295	0.432 (11mm)	M10-1.60x30mm	0.787 (20mm)	0.847	0.669	1.460	HO-62JN	\$28.62	M1016030	\$2.00
MMK: Z-6, ZA5-6-0, ZA5-6B, ZJA5-6	6	0.295	0.432 (11mm)	M8-1.25x30mm	0.984 (25mm)	0.790	0.690	1.570	SG-60JN	\$28.62	M0812530	\$2.00
Kitagawa: B-206, BT-206, BB-06, B-07 Strong: N206 Samchully: HS-06	6	0.295	0.472 (12mm)	M10-1.60x30mm	0.787 (20mm)	0.728	0.689	1.417	KT-60JN	\$28.62	M1016030	\$2.00
Kitagawa: B-06	6	0.295	0.472 (12mm)	M10-1.60x30mm	0.787 (20mm)	0.885	0.689	1.440	KT-61JN	\$28.62	M1016030	\$2.00

Call Us Or Visit Our Website For Our Complete Selection!