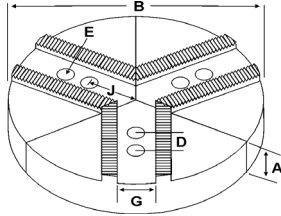
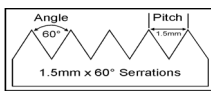
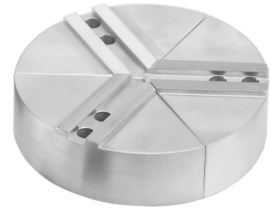


ROUND JAWS- 1.5 mm x 60° Serrations

FOR USE ON: **Kitagawa, Samchully, Strong, MMK, SMW Autoblok, Howa & Hitachi-Seiki Chucks**



- Round Jaws allow for complete gripping of workpiece
- Oversized jaws available
- Ideal for thin-walled or irregular shaped workpieces.
- Can be machined to fit workpiece
- Max. length of serrations: 5.75"
- All jaws have 2 holes
- Special "J" dimensions available
- Available in Aluminum, Cast Iron & Steel
- **Made in the USA**



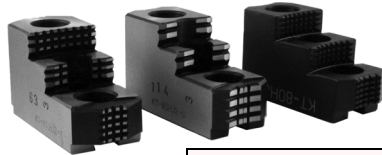
Group



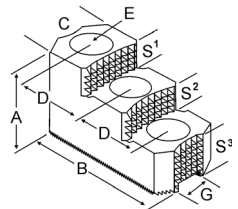
Group No.	Chuck Size	Critical Dimensions			Hole to Front J	Pie Dia B	Height Inch A	Industry Ref #	ALUMINUM		CAST IRON		STEEL					
		Groove Width G	Screw Size E	Hole Space D					Part Number	Price Set of 3	Part Number	Price Set of 3	Part Number	Price Set of 3				
K1-14-25	8	0.551 (14mm)	12mm	0.984 (25mm)	2.250	6	2.00	-	6-RKT-8200A	\$74.63	6-RKT-8200CI	\$98.56	-	-				
3.00							-	6-RKT-8300A*	\$101.67	-	-	-	-					
2.00							KTT8P	RKT-8200A	\$87.48	RKT-8200CI	\$126.72	RKT-8200S	\$254.36					
3.00							AKT8MHFG	RKT-8300A	\$136.95	-	-	RKT-8300S	\$349.74					
2.250					8	8	4.00	KTT8P1	RKT-8400A	\$137.16	RKT-8400CI	\$239.35	RKT-8400S	\$413.33	-	-		
6.00							-	RKT-8600A	\$269.51	-	-	-	-					
8.00							-	RKT-8800A	\$430.92	-	-	-	-					
2.266							8	2.00	HAR8MSHP	RHA-8200A	\$112.30	-	-	-				
4.00					HAR8MSHP1	RHA-8400A		\$157.22	-	-	-	-						
2.250					10	2.00	KTT10-8P	10-RKT-8200A	\$130.44	10-RKT-8200CI*	\$190.08	10-RKT-8200S	\$365.63					
						3.00	-	10-RKT-8300A	\$173.10	-	-	-						
						4.00	KTT10-8P1	10-RKT-8400A	\$202.41	10-RKT-8400CI	\$337.91	-	-					
						6.00	-	10-RKT-8600A*	\$422.85	-	-	-						
2.250					12	2.00	KTT12-8P	12-RKT-8200A	\$191.51	-	-	-						
						3.00	-	12-RKT-8300A	\$315.85	-	-	-						
						4.00	KTT12-8P1	12-RKT-8400A	\$380.07	-	-	-						
						2.250	15	2.50	-	15-RKT-8250A	\$439.39	-	-	-				
4.00					-	15-RKT-8400A		\$502.17	-	-	-							
K1-14-30					8	0.551 (14mm)	10mm	1.181 (30mm)	2.250	8	2.00	SUG8PSTS	RSG-8200A	\$112.30	RSG-8200CI	\$126.72	RSG-8200S	\$254.36
3.00											-	RSG-8300A	\$136.95	-	-	RSG-8300S	\$349.74	
4.00	SUG8P1STS	RSG-8400A	\$157.22	RSG-8400CI							\$239.35	-	-					
2.250	10	2.00	-	10-RSG-8200A					\$147.37	-	-	-						
		4.00	-	10-RSG-8400A					\$227.31	-	-	-						
		2.250	12	2.00					-	12-RSG-8200A	\$191.51	-	-	-				
2.00	-	12-RSG-8200A		\$191.51	-	-	-											
K1-16-25	8	0.630 (16mm)	12mm	0.984 (25mm)	2.250	8	2.00	HOW27M88P	RHO-8200A	\$98.82	RHO-8200CI	\$126.72	RHO-8200S	\$254.36				
3.00							-	RHO-8300A	\$130.68	-	-	RHO-8300S	\$349.74					
4.00							HOW27M88P1	RHO-8400A	\$137.16	RHO-8400CI	\$239.35	-	-					
2.250							10	2.00	-	10-RHO-8200A	\$130.44	-	-	-				
4.00					-	10-RHO-8400A		\$202.41	-	-	-							
2.250					12	2.00	-	12-RHO-8200A	\$191.51	-	-	-						
						4.00	-	12-RHO-8400A	\$380.07	-	-	-						
K1-17-23					8	0.669 (17mm)	12mm	0.906 (23mm)	2.250	8	2.00	-	RAB-8200A	\$112.30	RAB-8200CI	\$126.72	RAB-8200S	\$254.36
2.500	8	2.00	AUTOBHM8P	RAB-8200A4					\$112.30	-	-	-						
2.250	8	3.00	-	RAB-8300A					\$136.95	-	-	RAB-8300S	\$289.63					
		4.00	-	RAB-8400A					\$157.22	RAB-8400CI	\$239.35	-	-					
2.500	8	4.00	AUTOBHM8P1	RAB-8400A4					\$136.95	-	-	-						

Round Jaw Material: ALUMINUM-6061-T6 Bar Stock, CAST IRON-Gray, STEEL-1018
For complete list of applicable chucks, see pages 632-644. * denotes non-stock item. Please allow 1 week manufacturing time.

HARD JAWS- 1 & 2 STEP



- Designed for first operation roughing, expect standard runout between 0.005-0.010
- Reversible-suitable for OD & ID workholding.
- **XTRA BITE** -very aggressive bite. Has conical teeth for extra gripping power and ground body to provide improved runout.
- **GRIP-RITE-OEM Style** hard jaws have ground tips and provide better runout.
- **SHARK JAWS** have conical teeth for extra gripping power and black oxide for long life. Ideal for castings and scaly material. Made in the USA.
- 1 & 2 step jaws available.



Group Number	Chuck Size	Groove Width G	Screw Size E	Hole Space D	Critical Dimensions							Part Number	Price Per Set	Style	Code	
					Width C	OAL B	Height A	No. of Holes	No. of Steps	Top Step Ht S1	Mid Step Ht S2					Bot Step Ht S3
K1-14-25	8	0.551 (14mm)	12mm	0.984 (25mm)	1.500	3.300	2.000	3	1	0.500	-	1.000	KT-80HJ1	\$370.44	Shark Jaws	D
1.382					3.402	1.669	3	1	0.591	-	1.078	KT-80HJ1-U	\$299.25	OEM Style	E	
1.500					3.500	1.969	3	1	1.030	-	0.938	KT-80HJ1-X	\$315.00	XTRA-BITE	E	
1.500					3.300	2.000	3	2	0.500	0.500	1.000	KT-80HJ2	\$370.44	Shark Jaws	D	
1.382					3.409	2.000	3	2	0.465	0.465	1.070	KT-80HJ2-U	\$299.25	OEM Style	E	
1.500	3.500	1.969	3	2	0.530	0.530	0.909	KT-80HJ2-X	\$315.00	XTRA-BITE	E					
K1-16-25	8	0.630 (16mm)	12mm	0.984 (25mm)	1.500	3.300	2.000	3	2	0.500	0.500	1.000	HO-80HJ2	\$387.06	Shark Jaws	D

Call Us Today For All Of Your Machine Tool Needs!

CHUCK JAWS
LATHE WORKHOLDING

MACHINE VISES
MAGNETIC CHUCKS

RETENTION KNOBS
ER, DA, TG COLLETS

TOOLHOLDERS
TAP HOLDERS

INDEXABLE DRILLS
TURNING & BORING

ENDMILLS, DRILLS
TAPS & REAMERS

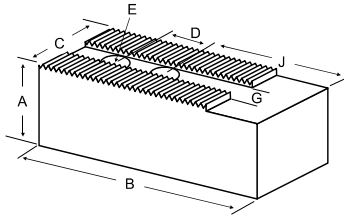
ABRASIVES
MEASURING TOOLS

MRO & SAFETY
FLAT STOCK/DRILL ROD

SOFT JAWS- 1.5 mm x 60° Serrations

C

FOR USE ON: **Kitagawa, Samchully, Strong, MMK, SMW Autoblok, Howa & Hitachi-Seiki Chucks**

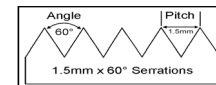


JAW NUTS (please see table at bottom of page)



FREE SCREWS!

2 High Grade Socket Head Cap Screws Provided With Each Jaw Nut!



Group

K1

QUANTITY DISCOUNTS!
Order **5 SETS OR MORE** of the same part number soft jaw and receive a **5% DISCOUNT!**

LATHE CHUCKS
VISE CENTERS

VISE JAWS
VISE ACCESSORIES

STRAIGHT SHANK
COLLET HOLDERS

LATHE BUSHINGS
DRILL CHUCKS

CARBIDE INSERTS
THREADING/GROOVING

CUTTING TOOLS
MACHINERY

PRECISION TOOLS
DEBURRING

COOLANT/FLUIDS
TOOL STORAGE

Group No.	Chuck Size	Critical Dimensions			Hole to Front J	Width Inch C	Length Inch B	Hght Inch A	No. of Holes	ALUMINUM		STEEL	
		Groove Width G	Screw Size E	Hole Space D						FLAT END Part Number	Price Set Of 3	FLAT END Part Number	Price Set Of 3
K1-14-25	8	0.551 (14mm)	12mm	0.984 (25mm)	2.000	1.500	3.750	1.500	2	KT-8150AF	\$41.31	KT-8150F	\$45.39
Kitagawa B-08, B-208, BB08, BB208								2.000	2	KT-8200AF	\$41.74	KT-8200F	\$37.79
Samchully HS-08								2.000	2	KT-8200BF	\$72.59	-	-
								3.000	2	KT-8300AF	\$50.22	KT-8300F	\$50.95
								3.000	2	KT-8300BF	\$88.20	-	-
								4.000	2	KT-8400AF	\$61.71	KT-8400F	\$64.27
5.000					2	KT-8500AF	\$119.26	KT-8500F	\$135.42				
6.000					2	KT-8600AF	\$192.94	KT-8600F	\$206.67				
Strong N208					2.000	2	KT-8201AF	\$41.85	KT-8201F	\$39.35			
					2.000	2	KT-8201BF	\$64.01	-	-			
					3.000	2	KT-8301AF	\$50.49	KT-8301F	\$52.04			
					4.000	2	KT-8401AF	\$62.37	KT-8401F	\$65.26			
MMK ZA6-8, HA6-8, HH-8, HHJ-8					6.000	2	KT-8601AF	\$209.29	KT-8601F	\$227.06			
					HURON EQUIVALENT	2.000	-	-	-	KT-8	\$45.95		
						3.000	-	-	-	KT-8MH	\$76.72		
	4.000	-	-	-		KT-8EH	\$87.47						
2.000	-	-	-	KT-8PL		\$70.10							
HOWA H3KT8, HO15M8, HO7MA8	3.000	-	-	-	KT-8MHPL	\$85.98							
	4.000	-	-	-	KT-8EHPL	\$101.88							
	SMW Autoblok BBM-210, BHM-210	2.000	2	SG-8200AF	\$50.62	SG-8200F	\$54.04						
		3.000	2	SG-8300AF	\$64.62	SG-8300F	\$68.79						
4.000		2	SG-8400AF	\$74.93	SG-8400F	\$79.52							
K1-14-30		2.000	2	HO-8200AF	\$50.62	HO-8200F	\$37.79						
	3.000	2	HO-8300AF	\$64.62	HO-8300F	\$68.71							
	4.000	2	HO-8400AF	\$66.69	HO-8400F	\$71.01							
	6.000	2	HO-8600AF	\$207.60	HO-8600F	\$222.57							
K1-16-25	2.000	2	HO-8201AF	\$48.33	HO-8201F	\$48.33							
	2.000	2	HO-8200APL	\$57.79	HO-8200PL	\$62.69							
	K1-17-23	2.000	2	AB-8200AF	\$50.62	AB-8200F	\$54.04						
		3.000	2	AB-8300AF	\$64.62	AB-8300F	\$68.79						
4.000		2	AB-8400AF	\$74.93	AB-8400F	\$79.52							
K1-17-25		2.000	2	AB-8205AF	\$50.62	AB-8205F	\$54.04						

For "Pointed" Soft Jaws, please substitute "P" for "F" in the part number. Example: KT-8150AF will be KT-8150AP. Add \$3.25 For Pointed Jaws
"Huron Equivalent" jaws are pointed. Soft Jaw Material: ALUMINUM-6061-T6 Bar Stock, STEEL-1018 or 1050, "B" JAWS-7075-T6 Aircraft Aluminum
For complete list of applicable chucks, see pages 632-644. * denotes non-stock item. Please allow 1 week manufacturing time.

JAW NUTS AND SCREWS



Chuck Make & Model	Chuck Size	Critical Dimensions						2 Screws Included With Each Jaw Nut					
		Heel Height H	Groove Width G	Screw Size Pitch & Length E	Hole Space D	Hght Inch A	Width Inch C	Length Inch B	Jaw Nut Part Number	Price Each	Screw Part Number	Price Each	
-	8	0.335	0.549 (14mm)	M12-1.75x35mm	0.984 (25mm)	0.895	0.807	1.840	KT-82JN	\$30.22	M1217535	\$2.00	
Kitagawa: BB-08, B-208, BT-208 Strong: N208 Samchully: HS-08	8	0.335	0.549 (14mm)	M12-1.75x30mm	0.984 (25mm)	0.807	0.807	1.880	KT-81JN	\$30.22	M1217530	\$2.00	
Kitagawa: NT-08, B-08, BT-08, HOB-8	8	0.374	0.549 (14mm)	M12-1.75x35mm	0.984 (25mm)	1.000	0.807	1.880	KT-80JN	\$24.24	M1217535	\$2.00	
Howa: HO15M10, HO22M10, HO24M10	8	0.335	0.629 (16mm)	M12-1.75x40mm	0.984 (25mm)	1.040	0.807	1.830	HO-80JN	\$30.22	M1217540	\$2.00	

Call Us Or Visit Our Website For Our Complete Selection!

2010-11 Master Catalog