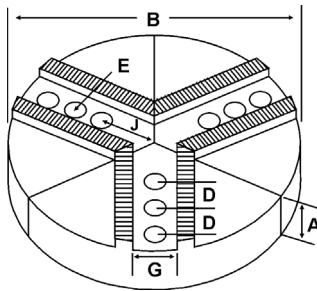
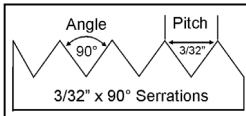
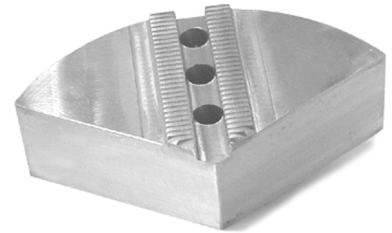


ROUND JAWS- 3/32" x 90° Serrations

FOR USE ON: **SMW Autoblok, Forkardt, Rohm, Pratt Burnerd & Other Chucks**



- Round Jaws allow for complete gripping of workpiece
- Oversized jaws available
- Ideal for thin-walled or irregular shaped workpieces.
- Can be machined to fit workpiece
- Max. length of serrations: 5.75"
- Special "J" dimensions available
- Available in Aluminum
- **Made in the USA**



Group
13

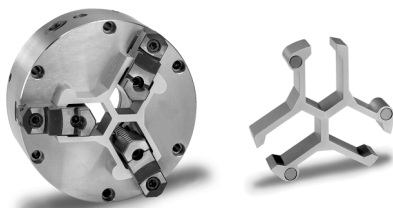


Group No.	Chuck Size	Critical Dimensions				Hole to Front J	Middle Hole to Front Jm	Pie Dia B	Height Inch A	No. of Holes	Industry Ref #	ALUMINUM	
		Groove Width G	Screw Size E	Hole Space D	Part Number							Price Set of 3	
13-100-138	16 to 20	1.004 (25.5mm)	20mm	1.380 (35mm)	3.500	4.880	15	2.500	3	-	RFK-16250A	\$424.73	
								4.000	3	-	RFK-16400A	\$522.20	
								2.500	3	-	21-RFK-16250A	\$777.03	
13-100-156	16 to 20	1.000 (25.5mm)	3/4	1.562 (39.5mm)	3.250	4.812	21	2.500	3	-	RSM-16250A	\$424.73	
							15	4.000	3	-	RSM-16400A	\$522.20	
13-100-156M	16	1.004 (25.5mm)	20mm	1.562 (39.5mm)	3.313	4.875	15	3.000	3	SMW15-16P	15-RSM-16301A4	\$425.00	
								4.000	3	SMW15-16P1	15-RSM-16401A4	\$481.98	
							18	3.000	3	SMW18-16P	18-RSM-16301A4	\$650.00	
								4.000	3	SMW18-16P1	18-RSM-16401A4	\$674.80	
	20	1.004 (25.5mm)	20mm	1.562 (39.5mm)	4.938	6.500	18	3.000	3	SMW18-20P	18-RSM-20301A	\$650.00	
								4.000	3	SMW18-20P1	18-RSM-20401A	\$674.80	
							21	3.000	3	SMW21-20P	21-RSM-20301A	\$699.00	
								4.000	3	SMW21-20P1	21-RSM-20401A	\$899.87	
	25	1.004 (25.5mm)	20mm	1.562 (39.5mm)	6.313	7.875	24	3.000	3	SMW24-25P	24-RSM-25301A	\$995.00	
								4.000	3	SMW24-25P1	24-RSM-25401A	\$1,252.35	
							28	3.000	3	SMW28-25P	28-RSM-25301A	\$1,399.00	
								4.000	3	SMW28-25P1	28-RSM-25401A	\$1,990.00	
13-118-250	25 to 32	1.181 (30mm)	1.00"	2.500 (63.5mm)	4.250	-	21	4.000	2	-	RSM-21400A	\$971.86	
						-	24	4.000	2	-	RSM-24400A	\$1,352.54	

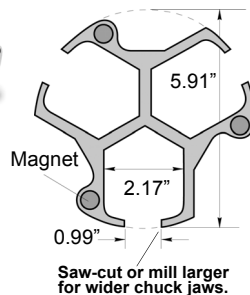
Round Jaw Material: ALUMINUM-6061-T6 Bar Stock, CAST IRON-Gray, STEEL-1018. 18" & Larger- Aluminum Casting T6
For complete list of applicable chucks, see pages 632-644. * denotes non-stock item. Please allow 1 week manufacturing time.

CHUCK STOPS

This product is so useful and simple, you'll wonder why you never thought of it. The Royal chuck stop is a precision machined aluminum extrusion which mounts squarely against the face of almost any 3 jaw lathe chuck, providing a fixed reference surface for workpieces to locate against.



- FEATURES:**
- Allows short parts to project past the chuck jaws
 - Eliminates the need to bore soft jaws
 - Front and rear locating surfaces are parallel within ±0.0004"
 - 25mm slot width can be milled larger for chucks with wider jaws.



Accommodates Chuck Jaws Up To 2 1/8" Wide

Description	Part Number	Set Price
Standard Set: 15, 20 & 25mm stops	ROY-25200	\$205.80
Deluxe Set: 15, 20, 25, 30 & 35mm stops	ROY-25210	\$358.68

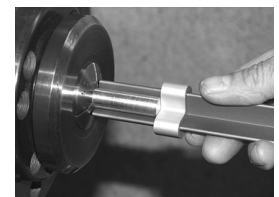


CHUCK/COLLET STOP

Stop-Loc Pat. Pend.

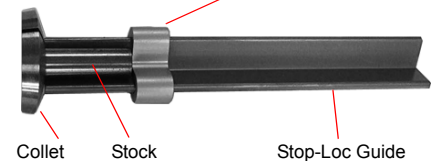


- Adjustable Precision-Gage lengths up to 5-1/2" long holding +/- .005
- Save Money! No more fixed length dedicated shop-made front collet stops for each job
- Versatile-For use on CNC or manual lathes whether you are running a bar manually or using a bar puller
- Consistency-Unique design incorporates self-centering, unobstructed viewing and contrasting colors to give user confidence by feeling and seeing that the dimension is being controlled
- **Made in USA**



Stop-Loc Adjustable Stop

- Easy To Use:**
- 1-Measure desired stock length from face of the Stop-Loc guide to face of adjustable stop. Hold adjustable stop in place and tighten set screw
 - 2-Pull the stock out of collet a little more than you need, grasp Stop-Loc and center it on stock with stock face touching adjustable stop face
 - 3-While holding Stop-Loc, hold your thumb on stock to avoid stock pull-back and push the Stop-Loc until the guide face touches collet face, then close the collet and remove the Stop-Loc



STOP-LOC
Adjustable Chuck/Collet Stop
Part # STOPLOC

\$16.95 each

Call Us Today For All Of Your Machine Tool Needs!

2010-11 Master Catalog