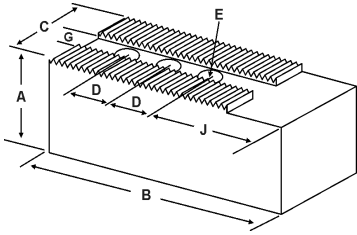


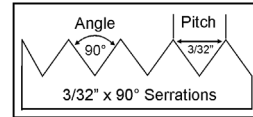
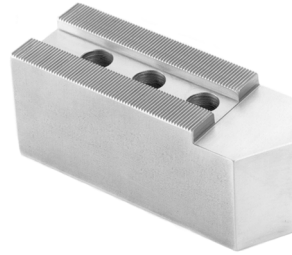
SOFT JAWS- 3/32" x 90° Serrations

C

FOR USE ON: **SMW Autoblok, Forkardt, Rohm, Pratt Burnerd & Other Chucks**



- Supplies maximum concentricity on finish turning operations
- Can be bored or turned to fit workpiece
- Steel jaws can be hardened
- Available flat ended or pointed for smaller diameter parts
- Special orders available
- Available in Aluminum, Steel & Aircraft Aluminum (where noted)
- **Made in the USA**



Group

13

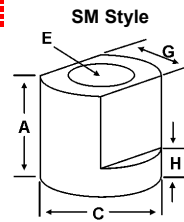
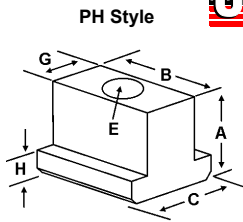
QUANTITY DISCOUNTS!

Order **5 SETS OR MORE** of the same part number soft jaw and receive a **5% DISCOUNT!**

Group No.	Critical Dimensions			Hole to Front J	Width Inch C	Length Inch B	Hght Inch A	No. of Holes	ALUMINUM		STEEL	
	Groove Width G	Screw Size E	Hole Space D						FLAT END Part Number	Price Set Of 3	FLAT END Part Number	Price Set Of 3
I3-100-138	1.004 (25.5mm)	20mm	1.380 (35mm)	3.500	2.50	6.50	2.50	2	FK-16250AF	\$105.51	FK-16250F	\$111.28
4.00							2	FK-16400AF	\$151.22	FK-16400F	\$158.98	
2.50							3	FK-16251AF	\$135.48	FK-16251F	\$143.08	
4.00							3	FK-16401AF	\$225.56	FK-16401F	\$238.46	
I3-100-156	1.000 (25.5mm)	3/4	1.562 (39.5mm)	3.250	2.50	6.50	3.00	2	SM-16300AF	\$120.74	SM-16300F	\$127.18
4.00							2	SM-16400AF	\$132.58	SM-16400F	\$143.83	
5.00							2	SM-16500AF	\$167.05	SM-16500F	\$174.87	
3.00							3	SM-16301AF	\$165.52	SM-16301F	\$174.87	
5.00							3	SM-16501AF	\$227.01	SM-16501F	\$238.46	
I3-100-175	1.000 (25.5mm)	3/4	1.750 (44.5mm)	7.460	2.50	10.00	3.50	2	FK-25350AF*	\$233.23	FK-25350F*	\$245.44
5.00							2	FK-25500AF*	\$333.19	FK-25500F*	\$350.64	
I3-110-162	1.102 (28mm)	3/4	1.625 (41.5mm)	3.630	3.50	6.75	3.00	2	SM-20300AF*	\$234.64	SM-20300F*	\$232.95
5.00							2	SM-20500AF*	\$305.07	SM-20500F*	\$302.86	
5.880				3.50	9.00	3.00	2	SM-20307AF*	\$257.09	SM-20307F*	\$254.61	
						5.00	2	SM-20507AF*	\$362.99	SM-20507F*	\$368.94	
I3-118-250	1.181 (30mm)	1.00	2.500 (63.5mm)	4.250	3.50	8.00	3.00	2	SM-24300AF	\$225.86	SM-24300F	\$238.46
5.00							2	SM-24500AF	\$376.41	SM-24500F	\$397.43	
7.000				3.50	11.00	3.00	2	SM-24301AF	\$286.73	SM-24301F	\$302.05	
						5.00	2	SM-24501AF	\$453.46	SM-24501F	\$476.92	
I3-118-275	1.181 (30mm)	1.00	2.750 (70mm)	4.500	3.50	10.00	3.50	2	SM-40350AF*	\$329.37	SM-40350F*	\$346.62
5.00							2	SM-40500AF*	\$470.52	SM-40500F*	\$495.14	

For "Pointed" Soft Jaws, please substitute "P" for "F" in the part number. Example: FK-16250AF will be FK-16250AP. For Pointed Jaws add \$6.50.
 Soft Jaw Material: ALUMINUM-6061-T6 Bar Stock, STEEL-1018, "B" JAWS-7075-T6 Aircraft Aluminum
 For complete list of applicable chucks, see pages 632-644. * denotes non-stock item. Please allow 1 week manufacturing time.

TEE NUTS & SCREWS



Chuck Size	Forkardt	Gamet	Pratt Burnerd PBA	Critical Dimensions					1 Free Screw Included With Each Tee Nut				
				Heel Height H	Groove Width G	Screw Size E	Hght Inch A	Width Inch C	Length Inch B	Tee Nut Part Number	Price Each	Screw Part Number	Price Each
16 - 20	-	-	-	0.575	0.999 (25.5mm)	3/4" - 10 x 1.75	1.150	1.370	1.370	SM-160TN	\$25.24	S3/410175	\$4.00
15 - 24	KP/T 400-500, KS 500	DE 400	400 HYD. FRONT END	0.433	1.003 (25.5mm)	20mm	1.141	1.417	1.082	FK-160TN	\$64.35	M2025050	\$3.00
25 - 32	-	-	-	0.728	1.180 (30mm)	1" - 8	1.752	1.772	-	SM-240TN	\$48.37	S1008	\$4.00

Call Us Or Visit Our Website For Our Complete Selection!

LATHE CHUCKS
LIVE CENTERS

VISE JAWS
VISE ACCESSORIES

STRAIGHT SHANK
COLLET HOLDERS

LATHE BUSHINGS
DRILL CHUCKS

CARBIDE INSERTS
THREADING/GROOVING

CUTTING TOOLS
MACHINERY

PRECISION TOOLS
DEBURRING

COOLANT/FLUIDS
TOOL STORAGE