



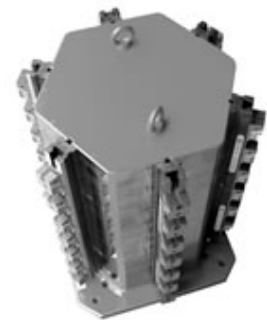
## MODULAR CLAMPING SYSTEMS

### Tombstones

OML is pleased to offer tombstones of the highest accuracy and outstanding dimensional repeatability. Milling and finish machining of the steel and aluminum tombstones are completed with high precision machines using the highest quality tools available. All tombstones are quality controlled using a coordinate measuring machine.

#### STEEL

- The steel tombstones are manufactured from high resistance steel plate (50/55.5 kg.mm<sup>2</sup>).
- After welding, the steel is allowed a normalization period (800 degrees) in order to eliminate the inner stress.
- After milling and finish machining, the tombstones are coated and dried in an oven at 60 degrees.



#### ALUMINIUM

- The aluminum tombstones are cast using the latest generation of materials (AlCu4TiMgKa) which maintains a high resistance (HB 90-115).
- After milling and finish machining, the tombstones are anodized (type EN 12373/1 ex UNI 4522-66) in order to avoid the wear and tear of the surfaces.

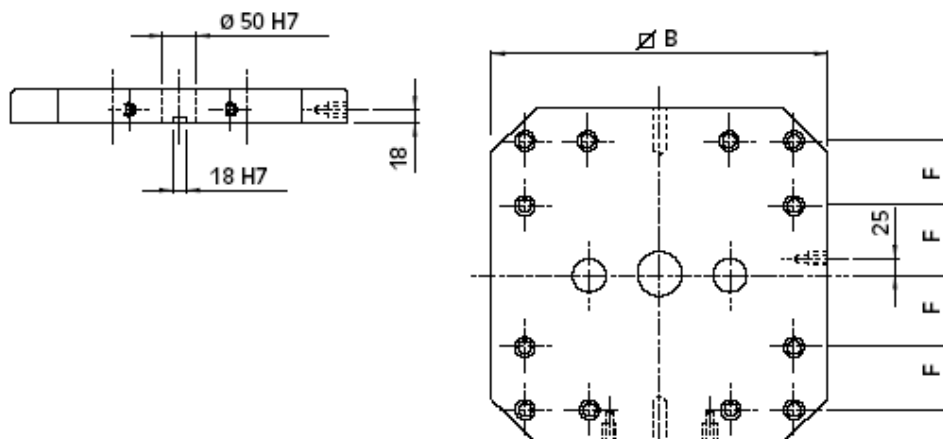


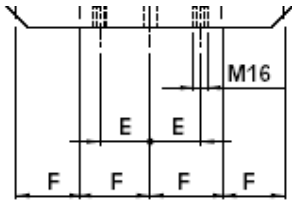
#### CAST IRON

- Type UNI EN 1561 GJL
- Normalized at 500/550° C
- High resistance HB 180-220

#### Standard adaptation for machine tools pallet.

Our tombstones and crankwebs are supplied standard with the base machined to the table of the machine tool as follows:





B mm	E mm	F mm
320	50	63
400	55	80
500	75	100
630	100	125
800	135	160

[Click Here to Download Information Sheet \(PDF will open in separate window\) - 2.3 MB](#)



Copyright ©2008-2012 OML. All Rights Reserved.

[HOME](#) | [CURRENT PROMOTIONS](#) | [ABOUT OML](#) | [PRODUCTS](#) | [SALES NETWORK](#) | [CONTACT](#) | [SITEMAP](#)